

STANDARD LIFT TRACK

Track Assembly:

- ☐ 12 Ga. 304 Stainless Steel - Full Angle Mount
- ☐ 11 Ga. Galvanized Steel - Clip Angle Mount

Track Mounting Angle:

- ☐ Inside Angle for Wood, Steel or Aluminum
- ☐ Outside Angle for Wood
- ☐ Outside Angle for Masonry

Shaft: Solid Keyed

- ☐ 304 Stainless Steel
- ☐ Galvanized Steel

Drums:

- ☐ Cast Aluminum
- ☐ Specialty Coated

Bearings: Sealed Greaseable

- ☐ Stainless Steel
- ☐ Painted Cast Iron

Torsion Springs:

- ☐ 304 Stainless Steel
- ☐ Galvanized Steel

TROLLEY OPERATOR:

(18" Required from)

- ☐ NuMax
- ☐ MagneMax
- ☐ Electric
- ☐ Supralift

INTERMEDIATE HORIZONTAL
TRACK SUPPORT: (BY INSTALLER)
*For Doors Over 12' High or 144 sq/ft

HORIZONTAL ANGLE:

BACK HANG:
(BY INSTALLER)

PUSHER SPRING OR
SPRING BUMPER:
(OPTIONAL)

HORIZONTAL TRACK:

- ☐ 11 GA. Galvanized 3" TRACK
- ☐ 12 GA. Stainless Steel 3" TRACK

** 2" Track Available Upon Request

RADIUS:
15" R. Galvanized
15" R. Stainless Steel

BACK ROOM
DOOR HEIGHT + 18" SS (3" TRACK)
+ 20" Galvanized

3" VERTICAL TRACK:

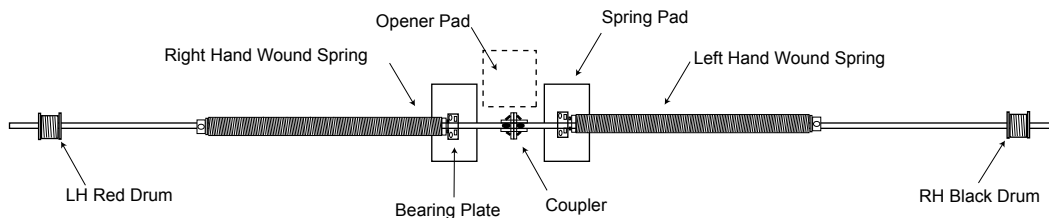
HEIGHT IN CLEAR:

TRACK CLEARANCE:

HEADROOM

NOTE:

Spring size and configuration individually calculated to counterbalance door load. An exact spring layout can be furnished upon approval of bid. Some doors may require more than 2 springs.



RECOMENDED MINIMUMS

Spring Pad - By Others:

(Pads must be flush with jambs)

- ☐ Metal - 8"W x 12"H x 1/4"
For use with metal jambs
- ☐ Wood - 2" x 6" LUMBER x 12"
For use with wood jambs

Torsion Springs:

- ☐ 10,000 cycle
- ☐ 25,000 cycle
- ☐ 50,000 cycle
- ☐ 100,000 cycle
- ☐ OTHER _____

HEADROOM REQUIREMENTS:

DOOR HEIGHT	3" TRACK
UP TO 10'0"	16"
10'3" - 18'0"	18"
18'3" AND UP	19-3/4"

Trolley Operators MAY Require an Additional 6" Headroom

CLIP ANGLE MOUNT SHOWN

© AMGDS 2006

American
garage door supply inc.
1-800-233-1487

CUST: _____
JOB #: _____
ARCH: _____
CONT: _____

STANDARD LIFT

OPENING SIZE: ___' ___" W x ___' ___" H

DOOR SIZE: ___' ___" W x ___' ___" H

OPERATOR MODEL : _____

AVAILABLE HEADROOM: _____

HEIGHT IN CLEAR: _____

☐ DOOR ONLY

☐ DOOR WITH OPENER

Standard Lift

DATE: _____

BID #: _____

PAGE ___ of ___