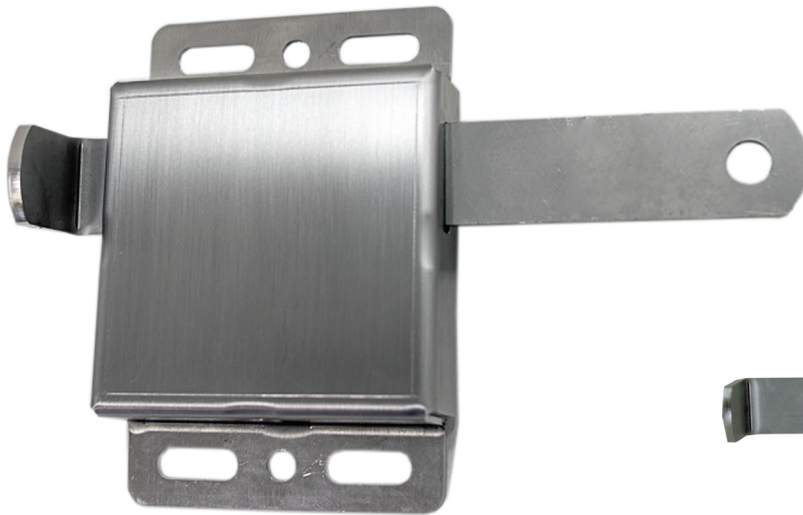


# STAINLESS STEEL

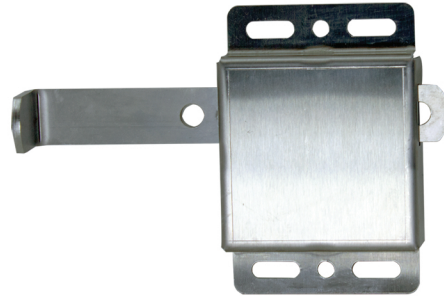
## Universal Slide Lock LIU-SS



**Extended**



Made In U.S.A.



**Retracted**

### Features

- All Stainless Steel Design
- Heavy Duty Frame
- Attractive #4 Finish
- Spring Assisted Bolt
- Dual Lock-Out Holes
- Surface Mounted
- Fits 2" or 3" Garage Door Track

**Great for any application  
exposed to wet or corrosive  
conditions!**

**Material:** 304 Stainless Steel

**Finish:** #4 Stainless

**Frame Height:** 4-7/8"

**Frame Width:** 3-1/4"

**Frame Depth:** 7/8"

**Bolt :** 1" x 1/8" Flat

**Bolt Extended Projection** 3-1/4" (From Frame)

**Bolt Travel:** 2-3/4"

**Bolt Retracted Projection:** 1/2" (From Frame)

**Bolt Projection:** 3/8" (From Mounting Surface)

**Lock Hole Diameters:** 3/8"

**Lock Hole Position:** 2-3/4" (Center of hole from frame)

**Mounting Hole Distance:** 4" (Top to Bottom- Center of Holes)

**Mounting Hole Diameter** 5/16"

 **American**<sup>TM</sup>  
garage door supply inc.

1225 Industrial Park Dr SE.  
Bemidji, MN 56601

1-800-233-1487 Ph. (218) 751-6551 Fax