

2" LOW-HEADROOM FRONT MOUNT TRACK - STANDARD

Track Assembly:

- 14 Ga. 304 Stainless Steel - Clip Angle Mount
- 14 Ga. Galvanized Steel - Clip Angle Mount
- 14 Ga. 304 Stainless Steel - Bracket Mount
- 14 Ga. Galvanized Steel - Bracket Mount

Track Mounting Angle:

- Inside Angle for Wood, Steel or Aluminum
- Outside Angle for Wood
- Outside Angle for Masonry

Shaft: Solid Keyed

- 304 Stainless Steel
- Galvanized Steel

Drums:

- Cast Aluminum
- Specialty Coated

Bearings: Sealed Greaseable

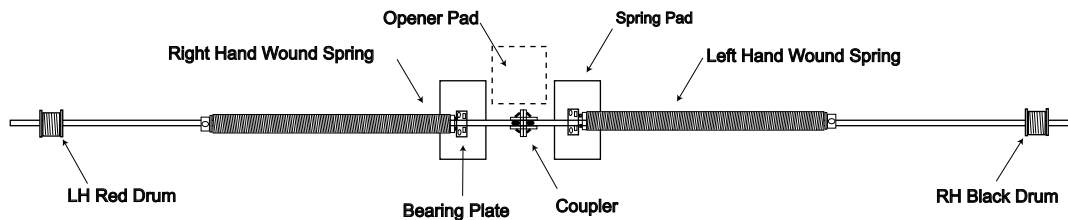
- Stainless Steel
- Painted Cast Iron

Torsion Springs:

- 302 Stainless Steel
- Galvanized Steel

NOTE:

Spring size and configuration individually calculated to counterbalance door load. An exact spring layout can be furnished upon approval of bid. Some doors may require more than 2 springs



RECOMENDED MINIMUMS

Spring Pad - By Others: (Pads must be flush with jambs)

- Metal - 8"W x 12"H x 1/4"
For use with Metal jambs
- Wood - 2" x 6" LUMBER x 12"
For use with wood jambs

TORSION SPRINGS:

- 10,000 cycle
- 25,000 cycle
- 50,000 cycle
- 100,000 cycle
- OTHER _____

INTERMEDIATE HORIZONTAL
TRACK SUPPORT: (BY INSTALLER)
*For Doors Over 12' High or 144 sq/ft

2" TOP TRACK/STARTER ANGLE
Galvanized on ALL Models

REAR HANGER:
(BY INSTALLER)

TROLLEY OPERATOR:

- Nu MAX
- Magne MAX
- Electric Trolley

HORIZONTAL TRACK:

RADIUS:

- 2" - 14" R. SS UPPER
- 2" - 14" R. SS LOWER
- 2" - 12" R. GALV. UPPER
- 2" - 15" R. GALV. LOWER

BACK ROOM
DOOR HEIGHT + 18"

2" VERTICAL TRACK:

HEADROOM

TRACK CLEARANCE
DOOR HEIGHT - 1"
HEIGHT IN CLEAR
DOOR HEIGHT + 10"

HEADROOM REQUIREMENTS:
2" TRACK: 10"
ADDITIONAL HEADROOM REQUIRED
FOR TROLLEY OPERATOR

CLIP ANGLE MOUNT SHOWN

© AMGDS 2006



CUST:	LOW-HEADROOM FRONT MOUNT		OPERATOR MODEL :	HEIGHT IN CLEAR:	LH Front DATE: _____ BID #: _____ PAGE ____ of ____
JOB #:	OPENING SIZE: ___' ___" W x ___' ___" H		AVAILABLE HEADROOM:	<input type="checkbox"/> DOOR ONLY	
ARCH:	DOOR SIZE: ___' ___" W x ___' ___" H			<input type="checkbox"/> DOOR WITH OPENER	
CONT:					