

Other American Products:

**NuMax™
Air-Powered Operators**

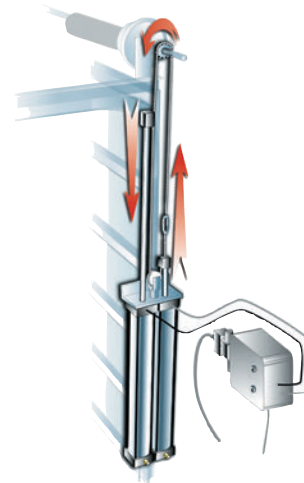


**smartJACK™
VFD Specialty
Operators**



**Ultraclear™
Full Vision Doors**

**Supralift II™
Air-Powered Operators**



The Right Product, The Right Company, The Right Choice

In specifying American Garage Door Supply products for your project, you are focusing on our commitment to quality and reputation for excellence. Backed by over three decades of experience, innovation and proven performance, American Garage Door Supply's door, operator, hardware and heater products are the right choice to make your next project everything you need it to be.

Call us today for more information about our high quality products, technical assistance or for a dealer near you.

Manufactured By
American™
garage door supply inc.

Bemidji, Mn

**Our Experience
Works for You!**

1-800-233-1487

CarwashDoors.com

Members of:



Made In U.S.A

Distributed By:



SURVIVOR GOLIATH™



Translucent
Polycarbonate Garage Doors
(For Extra Large Doorways)

**Designed and Manufactured
for Wet, Corrosive &
Demanding Environments**

**Location tested and approved
in some mean & nasty places:**

- Truck/Train Washes
- Waste Treatment
- Transportation Facilities
- Heavy Industrial Areas
- Dairy Operations
- Poultry Farms
- Livestock Barns
- Slaughterhouses
- Agricultural Buildings
- Fertilizer Plants
- Salt/Brine Buildings
- Food Processing
- Chemical Plants
- Cold Storage Warehouses
- Marine Environments
- Mining Facilities
- Material Handling Areas
- Many More...



Manufactured By
American™
garage door supply inc.

SURVIVOR™ GOLIATH™ Polycarbonate Doors

The Benefits Of Polycarbonate In A Larger Door



**3 YEAR
WARRANTY**

**On Goliath™ Door
Systems**

Unsurpassed Durability

Constructed of the toughest corrosion resistant materials available. Survivor™ doors feature state-of-the-art materials to provide maximum life and durability even in the most demanding environments.

Reliable Operation

Designed for harsh, high use applications. Survivor™ doors superior section design and hardware ensure smooth, reliable operation year-after-year.

Low Maintenance

Engineered for minimal maintenance and service. Goliath doors reduce annual costs and delivers a better overall value for your operation.

Attractive

Distinct appearance enhances your buildings appearance. Clear, translucent design allows light transmission both inside & outside the doorway maximizing bay visibility and providing around-the-clock security & comfort.

Complete Weather Protection

Protects customers, vehicles, building interior and equipment from wind, cold weather and other hazards. 5 X-wall sections offer thermal protection in any climate.

Advanced Materials... Superior Product.

5/8" Five X-Wall Polycarbonate Panels

Tough, shatterproof, translucent polycarbonate panels are strong, corrosion resistant and virtually indestructible. Polycarbonate panels allow high visibility.

Aluminum Alloy Frame

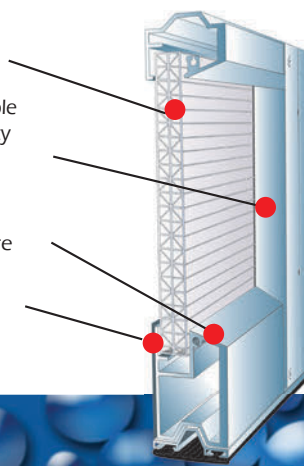
Heavy duty aluminum stiles and rails provide a strong, durable frame. Heavy duty bottom rail on bottom section adds rigidity and structural integrity to the door section. Available in powdercoat or anodized finish to match your color scheme.

Beveled Aluminum Rails

Tongue & groove and beveled meeting rails shed moisture and eliminate watertraps.

Double Panel Seal

Double panel seal provides protection from dirt, contamination and moisture.



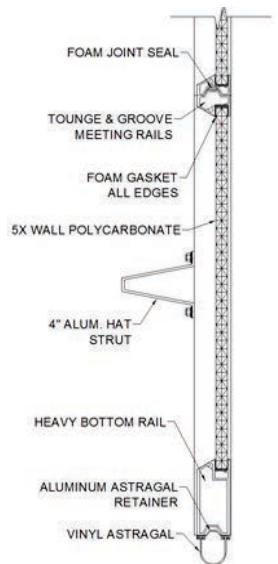
A Great Sectional Design With Structural Integrity

The Polycarbonate Door Built for Those Extra Large Openings

The Goliath model of our Survivor Polycarbonate Doors feature an extra heavy-duty bottom rail and a large hat strut that adds a whole new level of structural integrity to your extra wide and/or extra tall polycarbonate door.

The heavy-duty aluminum bottom rail keeps your door straight and true with the strength that is required required handle the wide span without sagging virtually eliminating the "smiling effect" common with other products. Extra large aluminum hat strut provides the rigidity you need to resist the wind and prevent deflection. Our Goliath product still provides all the corrosion resistance you've come to expect and is available in our signature Silver, Gold and Platinum hardware models.

Sizes available up to 32' wide.



What Makes Survivor™ Products Better? Quality Components.



The Pioneer of Stainless Steel Track & Hardware

Heavy duty stainless steel track and hardware were developed to give you the toughest rust-proof qualities in the industry. Select our Gold or Platinum models to ensure your door will withstand the test of time in the most punishing environments. Incredibly tough, wear and crack resistant, our 3" track, bearing plates, bearings, shaft, cable, fasteners, 12ga. face hardware and pusher springs are manufactured with high quality 304 grade stainless steel. Provides you with the rust-free durability you need in wet, corrosive environments.

Rust-Resistant Torsion Springs

Used in manual or automated door systems, our rust-resistant torsion springs offer safe, smooth and perfectly balanced operation. Choose either our standard hot-dipped galvanized wire for standard protection or upgrade to totally rust-resistant stainless steel wire.

High Quality Rollers

Select from the "Original" or "Supreme" Magnum™ roller designs match the performance, reliability and durability you need in your unique application and exposure. Choose our "Supreme" Magnums with stainless steel bearings for the best in rust resistance and dependability or select the "Original" Magnum rollers, which have set the industry standard for more than three decades.

3 Models To Choose From:

Platinum

PREMIUM MODEL HARDWARE FEATURES

- Hinges/Hardware: 12ga. Stainless Steel
- Track: 3" Heavy Duty Stainless Steel
- Bearing Plates: 12ga. Stainless Steel
- Shaft: Solid, Keyed, Stainless Steel
- Drums/Couplers: Specialty Coated
- Bearings: Greaseable, Stainless Steel
- Cable: 5/32" Stainless Steel
- Rollers: Magnum™ "Supreme" Rollers
- Fasteners: Stainless Steel/Specialty Coated
- Torsion Spring Models- Stainless Steel

Gold

DELUXE MODEL HARDWARE FEATURES

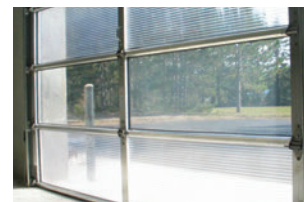
- Hinges/Hardware: 12ga. Stainless Steel
- Track: 3" Heavy Duty Galvanized Steel
- Bearing Plates: 12ga. Stainless Steel
- Shaft: Solid, Keyed, Stainless Steel
- Drums/Couplers: Specialty Coated
- Bearings: Greaseable, Stainless Steel
- Cable: 5/32" Stainless Steel
- Rollers: Magnum™ "Original" Rollers
- Fasteners: Stainless Steel/Specialty Coated
- Torsion Spring Models- Galvanized Steel

Silver

COMPETITIVE MODEL HARDWARE FEATURES

- Hinges/Hardware: 11ga. Galvanized Steel
- Track: 3" Heavy Duty Galvanized Steel
- Bearing Plates: 11ga. Galvanized Steel
- Shaft: Solid, Keyed, Galvanized Steel
- Drums/Couplers: Die Cast Aluminum/Iron
- Bearings: Greaseable, Standard
- Cable: 5/32" Stainless Steel
- Rollers: Magnum™ "Original" Rollers
- Fasteners: Galvanized Steel
- Torsion Spring Models- Galvanized Steel

Outstanding Options



• Full Vision Sections

Select our crystal-clear 5/8" Plexiglas™ full vision sections for maximum visibility, comfort and security.

• Powder Coat/Anodized Finish

Match your color specifications with a tough, appealing powder-coat or anodized frame. Choose from a variety of colors to match your special theme.



• Conveyor Cut-Outs

Custom designed for perfect alignment with your conveyor system.

• Hinge Gasket Option

Add hinge gaskets for under your stainless steel hardware for additional bi-metallic corrosion protection. Included in Platinum hardware models.



• Specialty Coated Shaftline Components

Add years to the life of your counterbalance assembly with our specialty coated drums, cones and couplers.



• Polycarbonate Color Options

Choose from a variety of polycarbonate panel colors including: Clear (standard), Blue, Green, Bronze or Opal to match your color theme