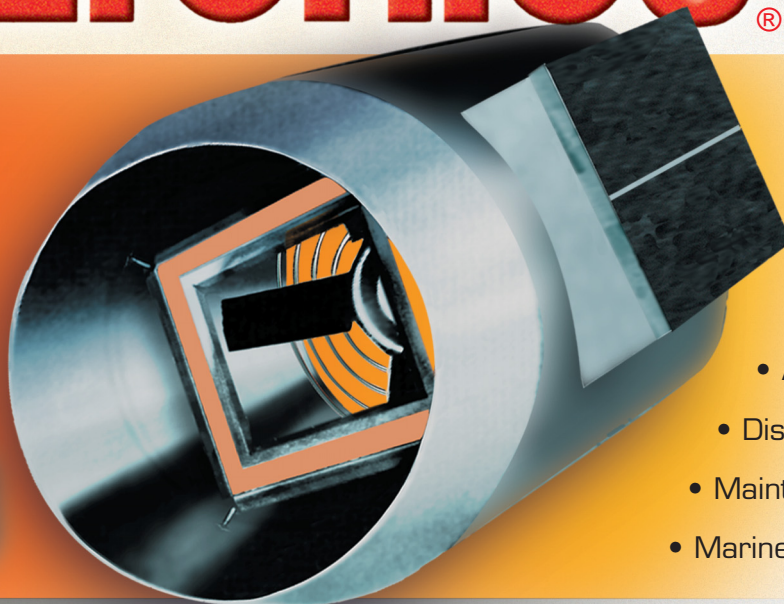


# DOORJET

- Stainless Steel
- Controls Totally Enclosed

# Solaronics® Gas Fired Heaters

## STOPS OPEN- DOOR CHILLS



### APPLICATIONS

- Car Washes
- Warehouses
- Manufacturers
- Auto Body Shops
- Distribution Centers
- Maintenance Facilities
- Marine Repair Facilities

**Mighty DOORJETs blast hot air to maintain employee comfort. Productivity improves. Energy dollars are saved.**

**DOORJET** heaters stop the chills and wasted energy that occur when outside bay doors are opened in car washes, industrial plants and distribution centers. The DOORJET's heat surge tempers the in-rushing cold air, keeping employees working in the area comfortable and saving energy dollars.

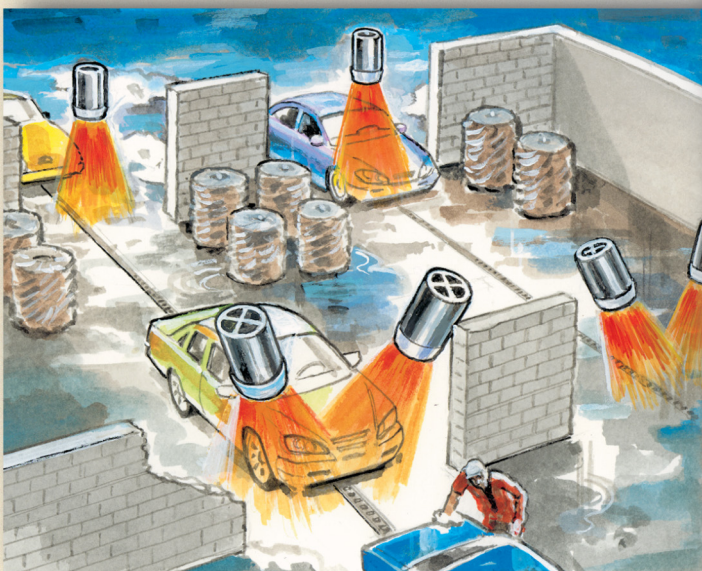
**Fully automatic operation – You don't have to turn the DOORJET on!**

Solaronics DOORJETs operate via a trip switch that starts the fan and burner automatically as the door is raised. A "jet" of heated air is directed toward the door instantly. When the door closes, the fan and burner turn off immediately.

*In car wash applications, DOORJET heaters can also be placed at vehicle drying stations to increase the efficiency of the drying cycle.*

### Easy installation for all door types.

Solaronics DOORJETs are installed with the angle of air discharge from vertical to horizontal. Vertical mounting directs the heat straight down for roll up or straight lift doors. For conventional doors, horizontal or angled placement may be utilized. Connections to electrical source, gas supply and door limit switch complete the installation.



### Key Features and Benefits:

- **Watertight enclosure:** All gas and electrical controls prewired and sealed
- **Fully assembled and factory tested** to ensure safe and dependable long life operation
- **16 Gauge 304 Stainless Steel casing** with two reinforcing angle rings
- **Stainless steel burner baffle**
- **Heavy duty axial flow fan**
- **Vertical or angle mounting**
- **Economical Natural Gas operation:** Also LP/Propane and other gaseous fuels options
- **550,000 to 950,000 BTUH input ratings** to fit most buildings
- **Instant heat:** No warm-up period required
- **Special "Jet" type burner**
- **Corrosion resistant manifold**
- **Hanging holes**
- **Options:** connection for outside air; inlet air grill



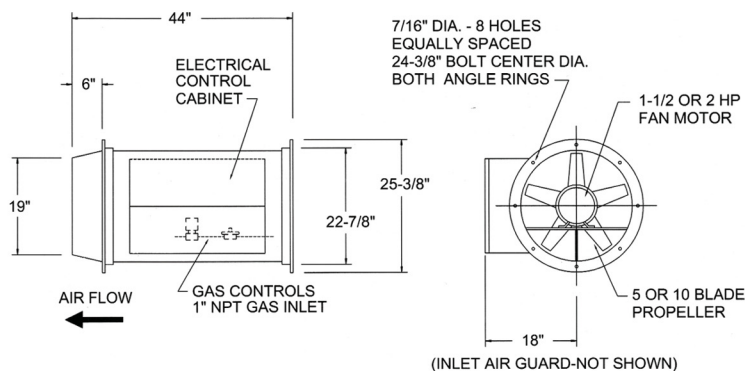
# Solaronics DOORJET

## Gas Fired Stainless Steel Heaters With Controls Totally Enclosed

### DOORJET Controls

- Remote control with On-Off switch and control circuit fuse
- 1 1/2 or 2 HP TEFC ball bearing 3-phase motor
- Magnetic motor starter
- Air flow switch
- Control transformer
- Door limit switch
- High temperature limit switch
- Remote summer-winter switch
- Electronic ultraviolet sensor
- Gas pressure regulator
- Modulating gas valve/temperature control
- "Hot" spark ignition
- Optional F.M. or I.R.I. controls

### DOORJET HEATER DIMENSIONS

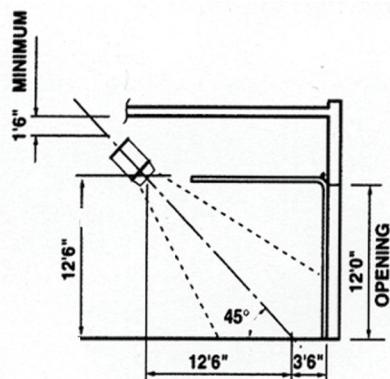


### DOORJET HEATER OPERATIONAL DATA

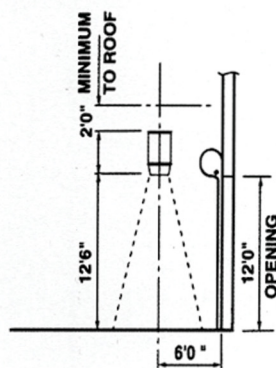
Model No.	Motor HP	BTUH Input	CFM	Fan RPM	Outlet Velocity	Temp. Rise	Gas Pressure at Burner
DJTE 55	1 1/2	550,000	7,000	1,750	3,500	70°	2.5" W.C.
DJTE 65	1 1/2	650,000	7,000	1,750	3,500	80°	3.0" W.C.
DJTE 75	1 1/2	750,000	7,000	1,750	3,500	90°	3.75" W.C.
DJTE 85	2	850,000	7,800	1,750	3,900	100°	5.0" W.C.
DJTE 95	2	950,000	7,800	1,750	3,900	110°	6.0" W.C.

Note: Based on Natural Gas Specific Gravity .6 - 1,000 BTU/cu. ft.

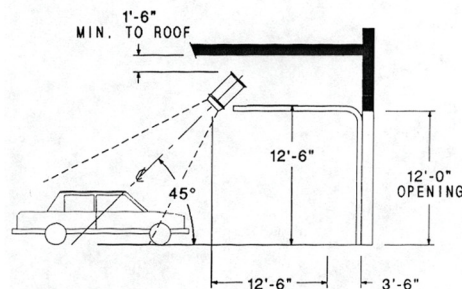
### TYPICAL DOORJET HEATER INSTALLATIONS



CONVENTIONAL APPLICATION



ROLL UP OR STRAIGHT LIFT APPLICATION



PROTECTED OUTDOOR APPLICATION

Note: Solaronics hot air heaters are designed to operate with the door open to assure adequate dilution with fresh air. Do not use hot air heaters in a closed unventilated area for space heating.

A single DOORJET heater will typically handle door openings up to 12' x 12'. Larger openings require two or more heaters.

## Solaronics Gas INFRA-RED Heaters

3720 Lapeer Road, Auburn Hills, MI 48326  
Phone: 1-800-223-5335 Fax: 1-248-651-0357  
Email: sales@solaronicsusa.com