

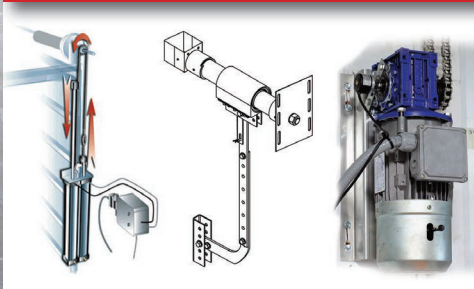
# **American**<sup>TM</sup> garage door supply inc.

## SPECIALTY PRODUCTS

# **Our Experience Works for You!**



**Products designed for excellent durability & performance in demanding or challenging applications.**



- » POLYCARBONATE DOORS
- » FULL VIEW GLASS DOORS
- » INSULATED WASHBAY DOORS
- » STAINLESS GARAGE DOOR PARTS
- » AIR POWERED OPERATORS
- » SPECIALTY ELECTRIC OPERATORS
- » INFRARED TUBE HEATERS
- » STAINLESS ENTRY DOORS

Call (800) 233-1487 or (218) 751-5254 ★ [Carwashdoors.com](http://Carwashdoors.com)

# Your Challenge, Our Specialty!

When you need more durability and reliability than what standard commercial products provide; American Garage Door Supply's **Specialty Garage Door and Operator Products** deliver unmatched performance.

Designed and manufactured for some of the worst exposures on earth, our products are specifically engineered to last longer, operate reliably and withstand the rigors of wet, corrosive and/or dirty environments. Give us a call today and let our experience go to work for you!

**1-800-233-1487**



**WET • CORROSIVE • DIRTY**

## ★ WELCOME ★

**Dear valued customers,** thank you for giving us the opportunity to serve as your specialty door, operator and heater product specialists for the past 28 years. We believe our high-quality premium products and knowledgeable staff benefit your company with excellent value and the support you need, when you need it. We are committed to providing you the best product solutions.

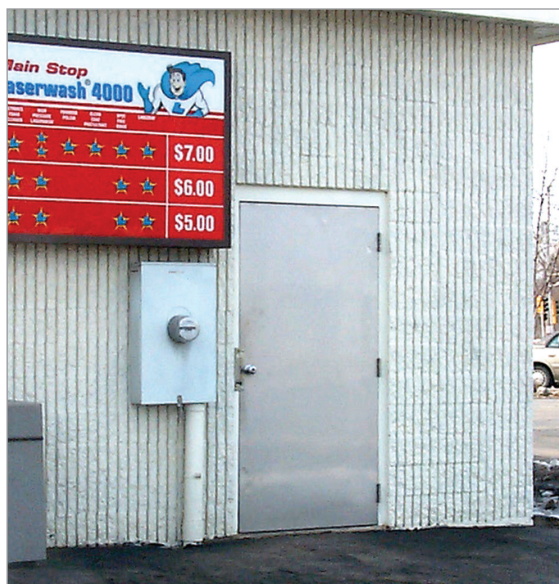
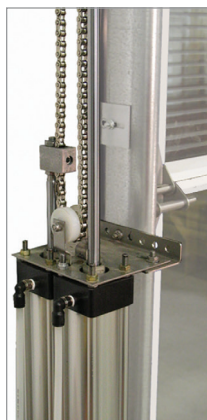
**We truly appreciate** your past and future business and the confidence you have placed in our company and our products. We reaffirm our commitment to provide you with only the highest quality products, convenient lead-times, helpful technical support and friendly customer service. Our goals are to help you grow your business with products & services that create value and to assist you in your future success.

**In our continuing effort to serve you better,** we have developed this catalog to provide you with an easy-to-use guide when ordering, promoting and reselling our products. We welcome any suggestions or comments you may have to help us improve and to serve you better. Please keep in mind that individual product brochures, specifications and shop drawings are available for you at your request as well.

***Thank you for choosing American Garage Door Supply!***



# CONTENTS



## 3 SPECIALTY GARAGE DOORS

Our premium garage door systems feature a number of section designs including polycarbonate, glass and insulated panels. Several hardware packages are available to meet your building's exposures, environment, amount of use and other requirements. This series of doors have stood the test of time for almost three decades and feature standard and customizable sizes to meet your needs.

## 19 GARAGE DOOR HARDWARE

Stainless steel & specialty hardware eliminate the deterioration that rust and corrosion create in wet, dirty and corrosive applications. Stainless steel provides a high-quality and clean appearance while withstanding the test of time in punishing environments.

## 37 AIR-POWERED & ELECTRIC DOOR OPENERS & CONTROLS

We carry a large selection of time-tested, air-powered and electric operators as well as high-quality specialty controls to tackle tough and challenging environments. Choose from a variety of functions, designs, cycle demands, lifting capabilities and/or modifications for your specific application. Our combination of specialized and standard access controls & accessories make your project a final success! We have sought out the best controls for use in harsh environments that are both dependable and functional.

## 49 INFRARED RADIANT HEATERS

Our Daystar Tube Heaters are the perfect choice for any high-moisture environment. These heaters provide infrared energy that is converted into heat and the surrounding air is then warmed by conduction & convection.

## 53 STAINLESS STEEL ENTRY DOORS

Tough applications demand tough products - our stainless steel door systems are no exception. These durable and attractive stainless steel panels are combined with a high-quality stainless frame that delivers the rust-free qualities you need in the toughest environments.

## 57 ORDER FORMS

## 58 TERMS & CONDITIONS

# ABOUT US

**American Garage Door Supply, Inc. is the leading provider of durable, high-quality garage doors, parts, hardware and accessories. Since 1985, we've been manufacturing a broad variety of standard and customized solutions for:**

- Energy Oil & Gas
- Industrial Manufacturing
- Infrastructure
- Car/Truck Wash
- Food & Beverage
- Agriculture
- Mining
- ANYWHERE there are Harsh Environments!

## LET OUR EXPERIENCE GO TO WORK FOR YOU!

Tap into almost three decades of experience working with products in adverse environments. Our experienced and friendly staff is happy to assist you with product recommendations & selection, technical & design support as well as installation & repair assistance to help you tackle your next challenging project.

## CUSTOM QUOTES

Our sales team can help you select the best products for your specialty situation and quickly create a custom quotation for your convenience. Give us a call today and let us put your items, quantities, material and transportation costs together for you quickly and accurately.

## EASY ORDERING

Give us a call today and let our friendly, knowledgeable staff enter your order accurately into our system or use our website for easy 24/7/365 convenience.

## TECHNICAL SUPPORT

Whether it's a new, retrofit or repair project issue, our technical support team has an answer for you. Our combined knowledge of over 100 years in the business draws from in-the-field experience and delivers the best outcome for you.

## SPECIALTY PRODUCTS CATALOG

Complete line of specialty garage door, operator, components, heaters and products manufactured to outlast and outperform other known products in harsh demanding environments.

## INDIVIDUAL PRODUCT LITERATURE

Product literature is available for your use on most of our product lines in printed or digital formats for your convenience.

## PRODUCT SPECIFICATIONS

Specifications for our products are available for your use including specialty garage doors, operators, heaters and entrance doors and many more.

## SHOP DRAWINGS

Shop drawings can be generated for your project. Let us know your criteria and we can generate a shop drawing specific to your project. Shop drawings include: dimensional values, material specifications, spring locations and much more.

## ACTIVE WEBSITES

Our websites are a fast and convenient way to download our product information, literature, specifications, shop drawings and more. Visit us at [carwashdoors.com](http://carwashdoors.com) or [stainlessgaragedoorparts.com](http://stainlessgaragedoorparts.com) 24/7/365.

## FAST SHIPPING

Quick-turn-around times are important to us. American Garage Door Supply focuses on making our delivery lead-times better than the industry standard to help you finish that project quickly.



# SPECIALTY GARAGE DOORS



- POLYCARBONATE
- INSULATED
- FULL VISION GLASS
- OPTIONS
- SECTION COMPONENTS

Designed and manufactured for wet,  
corrosive and high use environments



800-233-1487 ★ Fax: (218) 751-6551 ★ [Carwashdoors.com](http://Carwashdoors.com)

# SPECIALTY GARAGE DOORS



**World's Toughest Full-View  
Polycarbonate Garage Doors**



Made In U.S.A.

## Unsurpassed Durability

Constructed of the toughest corrosion resistant materials available. Survivor™ Doors feature state-of-the-art materials to provide maximum life and durability in the most demanding environments.

## Reliable Operation

Designed for harsh, high use applications. Survivor™ doors superior design, materials and hardware ensures smooth, easy operation, year-after-year.

## Low Maintenance

Engineered and manufactured for minimal maintenance and service. Reduces annual costs and more profit for you.

## High Visibility Attractiveness

Distinct appearance attracts customers and enhances your building appearance. Clear, translucent design maximizes bay visibility and provides around-the-clock customer security and comfort.

## Complete Weather Protection

Protects customers, vehicles, building interior and equipment from wind, cold weather and other hazards. 5 X-Wall panels offer thermal protection in any climate.



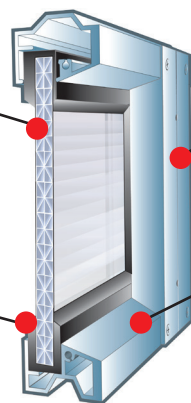
## Advanced Materials... Superior Product.

### 5/8" Five X-Wall Polycarbonate Panel

Tough, shatterproof, translucent polycarbonate panels are corrosion resistant and virtually indestructible. Polycarbonate panels allow high visibility and are easy to maintain.

### Double Panel Seal

Double panel seal provides protection from moisture infiltration and elements



### Aluminum Alloy Frame

Corrosion resistant aluminum stiles & rails provide a strong durable frame. Uniform stile thickness for better fastener holding power. Available in powder coat or anodized color finish to match your color scheme.

### Beveled Aluminum Rails

Tongue & groove meeting rails are beveled to shed moisture and eliminate watertraps.

## Select The Hardware Model That Fits Your Application

*Platinum*

### PREMIUM MODEL HARDWARE FEATURES

- Hinges/Hardware: 12ga. Stainless
- Track: 3" Heavy Duty Stainless
- Bearing Plates: 12 Gauge Stainless
- Shaft: Solid, Keyed Stainless Steel
- Drums: Specialty Coated
- Couplers: Specialty Coated
- Bearings: Greaseable, Stainless
- Cable: 5/32" Stainless
- Rollers: Magnum SP Carwash
- Fasteners: Stainless/Specialty Coated
- Torsion Springs - Stainless Steel

*Gold*

### DELUXE MODEL HARDWARE FEATURES

- Hinges/Hardware: 12ga. Stainless
- Track: 3" Heavy Duty Galvanized
- Bearing Plates: 12 Gauge Stainless
- Shaft: Solid, Keyed Stainless
- Drums: Specialty Coated
- Couplers: Specialty Coated
- Bearings: Greaseable, Stainless
- Cable: 5/32" Stainless
- Rollers: Original Magnum™ Carwash
- Fasteners: Stainless/Specialty Coated
- Torsion Springs - Galvanized Steel

*Silver*

### COMPETITIVE MODEL HARDWARE FEATURES

- Hinges/Hardware: 11 Gauge Galvanized
- Track: 3" Heavy Duty Galvanized
- Bearing Plates: 11 Gauge Galvanized
- Shaft: Solid, Keyed Galvanized
- Drums: Die Cast Aluminum
- Couplers: Painted Cast Iron
- Bearings: Greaseable, Standard
- Cable: 5/32" Stainless
- Rollers: Original Magnum™ Carwash
- Fasteners: Galvanized Steel
- Torsion Springs - Galvanized





# SPECIALTY GARAGE DOORS

## Polycarbonate Doors- Torsion Spring Models



# **SURVIVOR™**

Premium Polycarbonate Doors



### Includes:

High Cycle Rust Resistant  
Torsion Spring System

### Standard Features

- Tough, Shatterproof 5/8" Five X-Wall Lexan™ Panels
- Beveled Aluminum Stiles & Rails - No Watertraps!!
- 3" Angle Mounted Track - Up to 4' Highlift
- Extended 1" Solid Keyed Shaft-
- Headplates On Most Highlift Track Configurations
- 100,000 High Cycle Springs- Up to 144 ft<sup>2</sup>
- Bottom Vinyl Bulb Weatherseal

<i>Silver</i>		Height				
Width		8'	10'	12'	14'	16'
	8'	#SST8X8	#SST8X10	#SST8X12	#SST8X14	#SST8X16
	10'	#SST10X8	#SST10X10	#SST10X12	#SST10X14	#SST10X16
	12'	#SST12X8	#SST12X10	#SST12X12	#SST12X14	#SST12X16
	14'	#SST14X8	#SST14X10	#SST14X12	#SST14X14	#SST14X16
	16'	#SST16X8	#SST16X10	#SST16X12	#SST16X14	#SST16X16

<i>Gold</i>		Height				
Width		8'	10'	12'	14'	16'
	8'	#SGT8X8	#SGT8X10	#SGT8X12	#SGT8X14	#SGT8X16
	10'	SGT10X8	#SGT10X10	#SGT10X12	#SGT10X14	#SGT10X16
	12'	SGT12X8	#SGT12X10	#SGT12X12	#SGT12X14	#SGT12X16
	14'	#SGT14X8	#SGT14X10	#SGT14X12	#SGT14X14	#SGT14X16
	16'	#SGT16X8	#SGT16X10	#SGT16X12	#SGT16X14	#SGT16X16

<i>Platinum</i>		Height				
Width		8'	10'	12'	14'	16'
	8'	#SPT8X8	#SPT8X10	#SPT8X12	#SPT8X14	#SPT8X16
	10'	#SPT10X8	#SPT10X10	#SPT10X12	#SPT10X14	#SPT10X16
	12'	#SPT12X8	#SPT12X10	#SPT12X12	#SPT12X14	#SPT12X16
	14'	#SPT14X8	#SPT14X10	#SPT14X12	#SPT14X14	#SPT14X16
	16'	#SPT16X8	#SPT16X10	#SPT16X12	#SPT16X14	#SPT16X16



### Headroom Requirements

#### Standard Lift

3" Track- 15" Radius- 17" (up to 18' high doors)

2" Track- 15" Radius- 16"

2" Track- 12" Radius- 13"

#### High Lift

3" Track- 15" Radius- Door Ht. + Highlift + 12"

2" Track- 15" Radius- Door Ht. + Highlift + 11"

#### Vertical Lift

3" Track- Door Ht. + 12"

2" Track- Door Ht. + 12"

#### Low Headroom

3" Track- Front Mount- 12"

3" Track- Rear Mount- 9"

2" Track- Front Mount- 12"

2" Track- Rear Mount- 7"

Add for NuMax Operator - 6"



800-233-1487 ★ Fax: (218) 751-6551 ★ Carwashdoors.com

# SPECIALTY GARAGE DOORS

## **SURVIVOR™**

Premium Polycarbonate Doors



### **Includes:**

Heavy Duty Nylon Strap  
Molded Strap Spool  
Counterweight Tube  
Counterweights

## Polycarbonate Doors- Strap Counterweight Models



### **Standard Features**

- Tough, Shatterproof 5/8" Five X-Wall Lexan™ Panels
- Beveled Aluminum Stiles & Rails - No Watertraps!!
- 3" Angle Mounted Track - Up to 4' Highlift
- Extended 1" Solid Keyed Shaft-
- Headplates On Most Highlift Track Configurations
- Strap Counterweight Counterbalance System
- Bottom Vinyl Bulb Weatherseal



### **Headroom Requirements** **Standard Lift**

- 3" Track- 15" Radius- 17" (up to 18' high doors)  
2" Track- 15" Radius- 16"  
2" Track- 12" Radius- 13"

### **High Lift**

- 3" Track- 15" Radius- Door Ht. + Highlift + 12"  
2" Track- 15" Radius- Door Ht. + Highlift + 11"

### **Vertical Lift**

- 3" Track- Door Ht. + 12"  
2" Track- Door Ht. + 12"

### **Low Headroom**

Not Available

## *Silver*

		Height				
Width		8'	10'	12'	14'	16'
	10'	SSB10X8	SSB10X10	Consult Factory Other Sizes Available		
	12'	SSB12X8	SSB12X10			

## *Gold*

		Height				
Width		8'	10'	12'	14'	16'
	10'	SGB10X8	SGB10X10	Consult Factory Other Sizes Available		
	12'	SGB12X8	SGB12X10			

## *Platinum*

		Height				
Width		8'	10'	12'	14'	16'
	10'	SPB10X8	SPB10X10	Consult Factory Other Sizes Available		
	12'	SPB12X8	SGB12X10			

### **An Excellent Choice for Automatic Carwashes**



Strap counterweight door models are an excellent choice for any type of automatic carwash or anywhere there is continual moisture exposure and high frequency of use.



# SPECIALTY GARAGE DOORS

## Polycarbonate Doors- Standard Commercial Use Models



**SURVIVOR™**

Premium Polycarbonate Doors



### Includes:

Standard Cycle Rust Resistant  
Torsion Spring System



Made In U.S.A.

		Height		
Width		8'	10'	12'
	8'	#SBO8X8	#SBO8X10	#SBO8X12
	10'	SBO10X8	#SBO10X10	#SBO10X12
	12'	#SBO12X8	#SBO12X10	#SBO12X12
	14'	#SBO14X8	#SBO14X10	#SBO14X12
	16'	#SBO16X8	#SBO16X10	#SBO16X12



### Headroom Requirements

#### Standard Lift

2" Track- 15" Radius- 16"

#### High Lift

2" Track- 15" Radius- Door Ht. + Highlift + 11"

#### Vertical Lift

2" Track- Door Ht. + 12"

#### Low Headroom

2" Track- Front Mount- 12"

2" Track- Rear Mount- 7"

Add for NuMax Operator - 6"

### Standard Features

- Tough, Shatterproof 5/8" 5 X-Wall Lexan™ Panels
- Beveled Aluminum Stiles & Rails - No Watertraps!!
- 2" Angle Mounted Track - Standard Lift
- 1" Hollow Shaft
- Headplates On Most Highlift Track Configurations
- 12,000 Cycle Galvanized Springs
- Bottom Vinyl Bulb Weatherseal

### Standard Use Model

#### Hardware Features

- Hinges/Hardware: 14 Gauge Galvanized
- Track: 2" Heavy Duty Galvanized
- Bearing Plates: 11 Gauge Galvanized
- Shaft: Hollow, Galvanized Steel
- Drums: Die Cast Aluminum
- Couplers: None
- Bearings: Standard Freeway
- Cable: 5/32" Galvanized Steel
- Rollers: Commercial Steel, 10 Ball
- Fasteners: Galvanized Steel
- Torsion Springs - Galvanized

## Polycarbonate Sections Only

Save when replacing complete sets of door sections. Sections only packages include a bottom section with aluminum retainer and bulb seal. For full-vision sections, please add from door options.

		Height				
Width		8'	10'	12'	14'	16'
	8'	#SSO08X08	#SSO08X10	#SSO08X12	#SSO08X14	#SSO08X16
	10'	SSO10X8	#SSO10X10	#SSO10X12	#SSO10X14	#SSO10X16
	12'	#SSO12X8	#SSO12X10	#SSO12X12	#SSO12X14	#SSO12X16
	14'	SSO14X8	#SSO14X10	#SSO14X12	#SSO14X14	#SSO14X16
	16'	#SSO16X8	#SSO16X10	#SSO16X12	#SSO16X14	#SSO16X16



800-233-1487 ★ Fax: (218) 751-6551 ★ Carwashdoors.com

# SPECIALTY GARAGE DOORS



Polycarbonate Doors

## The Benefits Of Polycarbonate In A Larger Door

### Unsurpassed Durability

Constructed of the toughest corrosion resistant materials available. Survivor™ doors feature state-of-the-art materials to provide maximum life and durability even in the most demanding environments.

### Reliable Operation

Designed for harsh, high use applications. Survivor™ doors superior section design and hardware ensure smooth, reliable operation year-after-year.

### Low Maintenance

Engineered for minimal maintenance and service. Goliath doors reduce annual costs and delivers a better overall value for your operation.

### Attractive

Distinct appearance enhances your buildings appearance. Clear, translucent design allows light transmission both inside & outside the doorway maximizing bay visibility and providing around-the-clock security & comfort.

### Complete Weather Protection

Protects customers, vehicles, building interior and equipment from wind, cold weather and other hazards. 5 X-wall sections offer thermal protection in any climate.

## Advanced Materials... Superior Product.

### 5/8" Five X-Wall Polycarbonate Panels

Tough, shatterproof, translucent polycarbonate panels are strong, corrosion resistant and virtually indestructible. Polycarbonate panels allow high visibility.

### Aluminum Alloy Frame

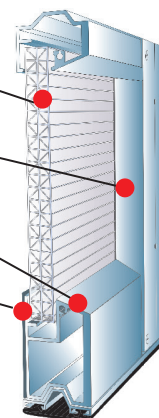
Heavy duty aluminum stiles and rails provide a strong, durable frame. Heavy duty bottom rail on bottom section adds rigidity and structural integrity to the door section. Available in powdercoat or anodized finish to match your color scheme.

### Beveled Aluminum Rails

Tongue & groove and beveled meeting rails shed moisture and eliminate watertraps.

### Double Panel Seal

Double panel seal provides protection from dirt, contamination and moisture infiltration.



**3 YEAR  
WARRANTY**

## Select The Hardware Model That Fits Your Application

*Platinum*

### PREMIUM MODEL HARDWARE FEATURES

- Hinges/Hardware: 12ga. Stainless
- Track: 3" Heavy Duty Stainless
- Bearing Plates: 12 Gauge Stainless
- Shaft: Solid, Keyed Stainless Steel
- Drums: Specialty Coated
- Couplers: Specialty Coated
- Bearings: Greaseable, Stainless
- Cable: 5/32" Stainless
- Rollers: Magnum™ "Supreme" Rollers
- Fasteners: Stainless/Specialty Coated
- Torsion Springs - Stainless Steel

*Gold*

### DELUXE MODEL HARDWARE FEATURES

- Hinges/Hardware: 12ga. Stainless
- Track: 3" Heavy Duty Galvanized
- Bearing Plates: 12 Gauge Stainless
- Shaft: Solid, Keyed Stainless
- Drums: Specialty Coated
- Couplers: Specialty Coated
- Bearings: Greaseable, Stainless
- Cable: 5/32" Stainless
- Rollers: Magnum™ Original Rollers
- Fasteners: Stainless/Specialty Coated
- Torsion Springs - Galvanized Steel

*Silver*

### COMPETITIVE MODEL HARDWARE FEATURES

- Hinges/Hardware: 11 Gauge Galvanized
- Track: 3" Heavy Duty Galvanized
- Bearing Plates: 11 Gauge Galvanized
- Shaft: Solid, Keyed Galvanized
- Drums: Die Cast Aluminum
- Couplers: Painted Cast Iron
- Bearings: Greaseable, Standard
- Cable: 5/32" Stainless
- Magnum™ Original Rollers
- Fasteners: Galvanized Steel
- Torsion Springs - Galvanized

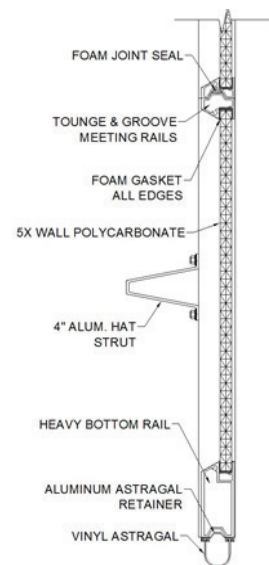




# SPECIALTY GARAGE DOORS

The Goliath model of our Survivor Polycarbonate Doors feature an extra heavy-duty bottom rail and a large hat strut that adds a whole new level of structural integrity to your extra wide and/or extra tall polycarbonate door.

The heavy-duty aluminum bottom rail keeps your door straight and true with the strength that is required to handle the wide span without sagging virtually eliminating the "smiling effect" common with other products. Extra large aluminum hat strut provides the rigidity you need to resist the wind and prevent deflection. Our Goliath product still provides all the corrosion resistance you've come to expect and is available in our signature Silver, Gold and Platinum hardware models.



<i>Silver</i>		Height				
Width		8'	10'	12'	14'	16'
	8'	#SST8X8	#SST8X10	#SST8X12	#SST8X14	#SST8X16
	10'	#SST10X8	#SST10X10	#SST10X12	#SST10X14	#SST10X16
	12'	#SST12X8	#SST12X10	#SST12X12	#SST12X14	#SST12X16
	14'	#SST14X8	#SST14X10	#SST14X12	#SST14X14	#SST14X16
	16'	#SST16X8	#SST16X10	#SST16X12	#SST16X14	#SST16X16

<i>Gold</i>		Height				
Width		8'	10'	12'	14'	16'
	8'	#SGT8X8	#SGT8X10	#SGT8X12	#SGT8X14	#SGT8X16
	10'	#SGT10X8	#SGT10X10	#SGT10X12	#SGT10X14	#SGT10X16
	12'	#SGT12X8	#SGT12X10	#SGT12X12	#SGT12X14	#SGT12X16
	14'	#SGT14X8	#SGT14X10	#SGT14X12	#SGT14X14	#SGT14X16
	16'	#SGT16X8	#SGT16X10	#SGT16X12	#SGT16X14	#SGT16X16

<i>Platinum</i>		Height				
Width		8'	10'	12'	14'	16'
	8'	#SPT8X8	#SPT8X10	#SPT8X12	#SPT8X14	#SPT8X16
	10'	#SPT10X8	#SPT10X10	#SPT10X12	#SPT10X14	#SPT10X16
	12'	#SPT12X8	#SPT12X10	#SPT12X12	#SPT12X14	#SPT12X16
	14'	#SPT14X8	#SPT14X10	#SPT14X12	#SPT14X14	#SPT14X16
	16'	#SPT16X8	#SPT16X10	#SPT16X12	#SPT16X14	#SPT16X16



## Headroom Requirements

### Standard Lift

3" Track- 15" Radius- 17" (up to 18' high doors)

2" Track- 15" Radius- 16"

2" Track- 12" Radius- 13"

### High Lift

3" Track- 15" Radius- Door Ht. + Highlift + 12"

2" Track- 15" Radius- Door Ht. + Highlift + 11"

### Vertical Lift

3" Track- Door Ht. + 12"

2" Track- Door Ht. + 12"

### Low Headroom

3" Track- Front Mount- 12"

3" Track- Rear Mount- 9"

2" Track- Front Mount- 12"

2" Track- Rear Mount- 7"

Add for NuMax Operator - 6"



# SPECIALTY GARAGE DOORS

## UltraClear™

Full-Vision Garage Doors

### The Full Vision Door With Authentic Value

#### Unsurpassed Durability

Constructed of the most advanced materials available. Ultraclear™ doors deliver state-of-the-art features to provide you with maximum durability in both standard and demanding applications.

#### Reliable Operation

Designed for high-use applications, Ultraclear™ doors feature a better system

design and superior hardware that ensures reliable operation year-after-year.

#### Low Maintenance

Engineered and manufactured for minimal maintenance and service.

Reduces annual costs and delivers a better overall value for your operation.

#### Attractive

Distinct full-vision appearance with insulated glass panels enhance the curb appeal of your building and allows for complete visibility. These aesthetics strengthen the promotion of your business's services and improves your overall image. Provides round-the-clock customer and employee comfort with clear glass panels.

#### Complete Weather Protection

Protects customers, vehicles, building interior and equipment from wind, cold weather and other elements. Choose from single pane or insulated glass panels. Panels are fully-gasketed and sealed for complete climate protection.

### Top Quality Section Construction

#### 5/8" Insulated or Single Glass Panels

Sealed insulated 5/8" tempered glass provides maximum visibility and exceptional strength. 1/8" glass or other panel materials available.

#### Aluminum Alloy Frame

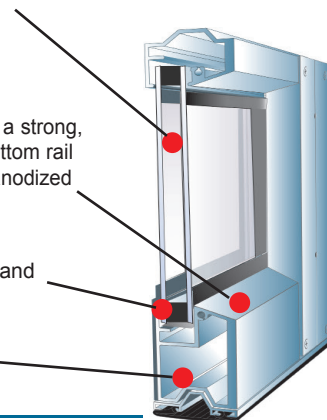
Corrosion resistant aluminum stiles with beveled rails provide a strong, durable frame that naturally sheds moisture. 4" heavy duty bottom rail ensures bottom section integrity. Available in powdercoat or anodized finishes to match your color theme.

#### Panel Gasket

Flexible gasketed frame seals glass from exterior elements and air infiltration.

#### Beveled Aluminum Rails

Tongue & groove and beveled meeting rails shed moisture and eliminate watertraps.



**3 YEAR  
WARRANTY**



*Platinum*

#### PREMIUM MODEL HARDWARE FEATURES

- Hinges/Hardware: 12ga. Stainless Steel
- Track: 3" Heavy Duty Stainless Steel
- Bearing Plates: 12ga. Stainless Steel
- Shaft: Solid, Keyed, Stainless Steel
- Drums/Couplers: Specialty Coated
- Bearings: Greaseable, Stainless Steel
- Cable: 5/32" Stainless Steel
- Rollers: Magnum™ "Supreme" Rollers
- Fasteners: Stainless Steel/Specialty Coated
- Torsion Spring Models- Stainless Steel

*Gold*

#### DELUXE MODEL HARDWARE FEATURES

- Hinges/Hardware: 12ga. Stainless Steel
- Track: 3" Heavy Duty Galvanized Steel
- Bearing Plates: 12ga. Stainless Steel
- Shaft: Solid, Keyed, Stainless Steel
- Drums/Couplers: Specialty Coated
- Bearings: Greaseable, Stainless Steel
- Cable: 5/32" Stainless Steel
- Rollers: Magnum™ "Original" Rollers
- Fasteners: Stainless Steel/Specialty Coated
- Torsion Spring Models- Galvanized

*Silver*

#### COMPETITIVE MODEL HARDWARE FEATURES

- Hinges/Hardware: 11ga. Galvanized
- Track: 3" Heavy Duty Galvanized Steel
- Bearing Plates: 11ga. Galvanized Steel
- Shaft: Solid, Keyed, Galvanized Steel
- Drums/Couplers: Aluminum/Iron
- Bearings: Greaseable, Standard
- Cable: 5/32" Stainless Steel
- Rollers: Magnum™ "Original" Rollers
- Fasteners: Galvanized Steel
- Torsion Spring Model- Galvanized

*Bronze*

#### STANDARD MODEL HARDWARE FEATURES

- Hinges/Hardware: 14ga. Galvanized
- Track: 2" Heavy Duty Galvanized Steel
- Bearing Plates: 11ga. Galvanized Steel
- Shaft: Hollow, Galvanized Steel
- Drums: Die Cast Aluminum
- Bearings: Freeway, Standard
- Cable: 5/32" Galvanized Steel
- Rollers: 2" Commercial Steel Rollers
- Fasteners: Galvanized Steel
- Torsion Spring Models- Galvanized





# SPECIALTY GARAGE DOORS



## Includes:

High Cycle Rust Resistant  
Torsion Spring System

## *Bronze*

		Height				
Width		8'	10'	12'	14'	16'
	10'	#UCST10X8	#UCST10X10	Consult Factory Other Sizes Available		
	12'	\$ 5,286 #UCST12X8	\$ 6,170 #UCST12X10			

## Standard Features

- Clear, Safe, 1/8" Tempered Glass Panels
- Beveled Aluminum Stiles & Rails- No Watertraps!!
- 3" Angle Mounted Track - Up to 4' Highlift
- Extended 1" Solid Keyed Shaft
- Headplates On Most Highlift Track Configurations
- 100,000 High Cycle Springs
- Bottom Rubber Bulb Weatherseal

## *Silver*

		Height				
Width		8'	10'	12'	14'	16'
	10'	#UCST10X8	#UCST10X10	Consult Factory Other Sizes Available		
	12'	#UCST12X8	#UCST12X10			



## *Gold*

		Height				
Width		8'	10'	12'	14'	16'
	10'	#UCGT10X8	#UCGT10X10	Consult Factory Other Sizes Available		
	12'	#UCGT12X8	#UCGT10X10			

## Headroom Requirements

### Standard Lift

- 3" Track- 15" Radius- 17" (up to 18' high doors)  
2" Track- 15" Radius- 16"  
2" Track- 12" Radius- 13"

### High Lift

- 3" Track- 15" Radius- Door Ht. + Highlift + 12"  
2" Track- 15" Radius- Door Ht. + Highlift + 11"

### Vertical Lift

- 3" Track- Door Ht. + 12"  
2" Track- Door Ht. + 12"

### Low Headroom

- 3" Track- Front Mount- 12"  
3" Track- Rear Mount- 9"  
2" Track- Front Mount- 12"  
2" Track- Rear Mount- 7"  
Add for NuMax Operator - 6"

## *Platinum*

		Height				
Width		8'	10'	12'	14'	16'
	10'	#UCPT10X8	#UCPT10X10	Consult Factory Other Sizes Available		
	12'	#UCPT12X8	#UCPT12X10			

## 1/8" Aluminum Panels

Add to price of door, per section

Door Width	
10'	12'
\$ 170.00	\$ 235.00



# SPECIALTY GARAGE DOORS

## Insulated Wash Bay Doors- Torsion Spring Models



**Includes:**  
High Cycle Rust-Resistant  
Torsion Spring System

Providing you with durability, security, energy saving as well as exceptional appearance, our 3" insulated washbay doors provide you a sandwich-type, high-strength door product that has maximum thermal protection, corrosion-resistance and minimal moisture absorbson. Our washbay doors can be combined with our special hardware packages to create the door system that matches your buildings' individual needs.

**Designed for high use, high moisture, and other tough environments that require a heavy duty insulated section.**

### Standard Features

- 3" Extruded Polystyrene Insulated Sections R-17
- Tongue and Groove Meeting Rails
- 26 ga. Pebble Texture Steel Skin- White Only
- 3" Angle Mounted Track - Up to 4' Highlift
- Extended 1" Solid Keyed Shaft
- Headplates On Most Highlift Track Configurations
- 100,000 High Cycle Springs- Up to 144 ft<sup>2</sup>
- Bottom Vinyl Bulb Weatherseal

*Silver*

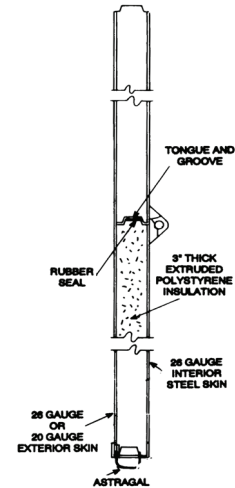
		Height				
Width		8'	10'	12'	14'	16'
	10'	M3ST10X08	M3ST10X10	M3ST10X12	M3ST10X14	M3ST10X16
	12'	M3ST12X08	M3ST12X10	M3ST12X12	M3ST12X14	M3ST12X16
	14'	M3ST14X08	M3ST14X10	M3ST14X12	M3ST14X14	M3ST14X16
	16'	M3ST16X08	M3ST16X10	M3ST16X12	M3ST16X14	M3ST16X16

*Gold*

		Height				
Width		8'	10'	12'	14'	16'
	10'	M3GT10X08	M3GT10X10	M3GT10X12	M3GT10X14	M3GT10X16
	12'	M3GT12X08	M3GT12X10	M3GT12X12	M3GT12X14	M3GT12X16
	14'	M3GT14X08	M3GT14X10	M3GT14X12	M3GT14X14	M3GT14X16
	16'	M3GT16X08	M3GT16X10	M3GT16X12	M3GT16X14	M3GT16X16

*Platinum*

		Height				
Width		8'	10'	12'	14'	16'
	10'	M3PT10X08	M3PT10X10	M3PT10X12	M3PT10X14	M3PT10X16
	12'	M3PT12X08	M3PT12X10	M3PT12X12	M3PT12X14	M3PT12X16
	14'	M3PT14X08	M3PT14X10	M3PT14X12	M3PT14X14	M3PT14X16
	16'	M3PT16X08	M3PT16X10	M3PT16X12	M3PT16X14	M3PT16X16



### Headroom Requirements

#### Standard Lift

- 3" Track- 15" Radius- 17" (up to 18' high doors)
- 2" Track- 15" Radius- 16"
- 2" Track- 12" Radius- 13"

#### High Lift

- 3" Track- 15" Radius- Door Ht. + Highlift + 12"
- 2" Track- 15" Radius- Door Ht. + Highlift + 11"

#### Vertical Lift

- 3" Track- Door Ht. + 12"
- 2" Track- Door Ht. + 12"

#### Low Headroom

- 3" Track- Front Mount- 12"
- 3" Track- Rear Mount- 9"
- 2" Track- Front Mount- 12"
- 2" Track- Rear Mount- 7"
- Add for NuMax Operator - 6"





# SPECIALTY GARAGE DOORS

## Specialty Garage Door Options



5/8" Full Vision Section



24" x 7" Window Lite

### Window Lites & Full Vision Sections

#### Polycarbonate Full Vision Sections

Select our crystal-clear 5/8" full vision sections constructed with two high quality 1/8" acrylic lites with air-gap for maximum visibility, comfort and security.

Add to price per door, per section.

Door Width			
10'	12'	14'	16'
#FVP10	#FVP12	#FVP14	#FVP16

#### Insulated Washbay Door Window Lites

Window Lites	Door Width			
	10'	12'	14'	16'
# of Lites Available	3	3	4	5

Description
24" x 7"-1/2" Ins. Glass
24" x 12"-1/2" Ins. Glass
44" x 15"-1/2" Ins. Glass
Full Vision Sections- 1/2" Insulated Glass



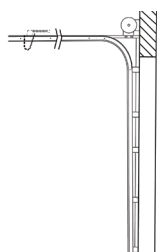
Made In U.S.A.

## Track Configurations

Standard and Highlift	
Standard Lift and up to 4'0" of Highlift	No Charge
Extended Vertical	No Charge
Highlift 4'0" to 6'0"	Consult Factory
Over 6'0" Highlift	Consult Factory

Vertical Lift/Incline	
Vertical Lift	Consult Factory
Not to Exceed 1"/12" Pitch	Consult Factory
Not to Exceed 6"/12" Pitch	Consult Factory

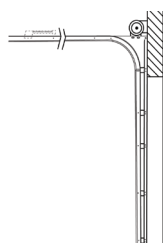
Low-Headroom	
For all Low-Headroom Configurations	Consult Factory



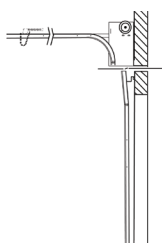
Standard Lift



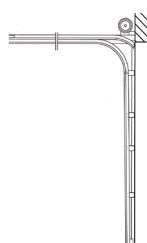
Vertical Lift



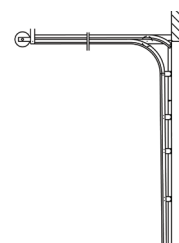
Extended Vertical



Highlift



Low-Headroom (Front)



Low-Headroom (Rear)



# SPECIALTY GARAGE DOORS

## Specialty Garage Door Options

### Roller Upgrade Options

#### Bearingless Rollers

Deduct for Bearingless rollers on Gold, Silver or Platinum models.

Door Height				
8'	10'	12'	14'	16'
UPG-RBL-08	UPG-RBL-10	UPG-RBL-12	UPG-RBL-14	UPG-RBL-16



Bearingless Roller Upgrades

#### Magnum Supreme™ Rollers (SP)

**with Stainless Steel Bearings**

Add for extreme condition rollers for Gold or Silver models

Door Height				
8'	10'	12'	14'	16'
UPG-RMSP-08	UPG-RMSP-10	UPG-RMSP-12	UPG-RMSP-14	UPG-RMSP-16



Magnum SP Roller Upgrades

### Torsion Spring Upgrades

#### Stainless Steel Torsion Spring Upgrade

Add for high-quality, rust-resistant stainless steel torsion springs on galvanized spring model doors.

Door Height						
Width		8'	10'	12'	14'	16'
	10'	\$ 448	\$ 560	\$ 818	\$ 1,019	\$ 795
	12'	\$ 493	\$ 717	\$ 1,098	\$ 762	\$ 1,042
	14'	\$ 627	\$ 941	\$ 717	\$ 952	\$ 1,288
	16'	\$ 806	\$ 616	\$ 918	\$ 1,344	\$ 1,781



Stainless Steel Spring Upgrade

### Angle Iron/Locks/Exhaust Ports

Part #	Description
PAI125	Angle Iron, 14 ga, Galvanized, 8', 1-1/2" x 1-1/2"
PAI220	Angle Iron, 12 ga, Galvanized, 10', 2" x 2"
PAS112-08	Angle Iron, 12 ga, Stainless Steel, 8', 1-1/2" x 1-1/2"
PAS220	Angle Iron, 12 ga, Stainless Steel, 8', 2" x 2"
OSL10	Outside Lock and Handle
	Exhaust Ports-VariouS Sizes



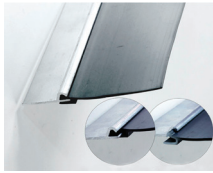
Stainless Steel Angle Iron



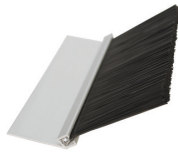
# SPECIALTY GARAGE DOORS

## Specialty Garage Door Options

### Seals and Weatherstripping



Aluminum/Vinyl



Brush Seal



Climate Seal



Dual Contact Top Seal

Part #	Description
AV21-XX	1" Aluminum, 2" Vinyl Weatherseal 10', 12', 14' or 16'
CS100 B or W	PVC Extruded Climate Seal (Brown, White or Grey)
BPS155	1-1/2" Straight Brush Weatherseal, 1-1/2" Poly Brush
BPS152	1-1/2" Straight Brush Weatherseal, 2" Poly Brush
BP4125	1-1/4" x 45 Angle Brush Weatherseal, 1-1/2" Poly Brush
BP4122	1-1/4" x 45 Angle Brush Weatherseal, 2" Poly Brush
TS14-XX	Dual Contact Top Seal Installed, 8', 10', 12', 14', 16'
WRJ	Slide-on Reverse Angle Jamb Seal (White or Grey)
TAOZ1058-100	#10 x 5/8" Self Drilling Screw, 100 pcs/each

### Conveyor Cutouts For Polycarbonate Doors



Single Cut-out

Part #	Description
CCO10	Single Cut-Out- One per Door - Please specify dimensions
CCO20	Double Cut-Out- Two per Door - Please specify dimensions

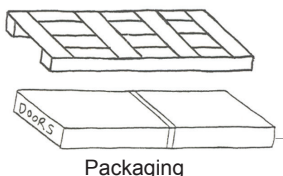
### Transom Doors For Polycarbonate Doors



Transom Door

Part #	Description
TD100	Hinged Pass Door with inside lock only
TD200	Hinged Pass Door with outside keyed lock

### Door Packaging



Packaging

Description
<b>Heavy Duty Packaging For LTL Shipment (Includes Pallet)</b> (100 Sq/Ft. Minimum) Round up to the nearest 50 Sq/Ft.- <b>Polycarbonate Doors</b>
<b>Heavy Duty Packaging For LTL Shipment (Includes Pallet)</b> (100 Sq/Ft. Minimum) Round up to the nearest 50 Sq/Ft.- <b>Glass Doors</b>
<b>Cardboard Packaging</b> Full Cardboard Wrap Only- For customer pickups only. (100 Sq/Ft Minimum) Round up to the nearest 50 Sq/Ft.
<b>12' x 28" Pallet</b> For Special Orders, If Required.



# SPECIALTY GARAGE DOORS

## Specialty Garage Door Options

### Polycarbonate Panel Color Options



### Meet Your Color Preferences!

Choose from a variety of polycarbonate colors including: Clear (standard), Blue, Bronze or Opal.

Add 10% to Door Cost For

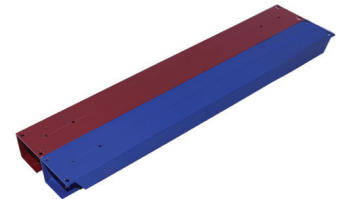
### Survivor/UltraClear Door Frame Finishes



### Powder Paint Door Frame Finishes

High quality powder paint finish adds extra protection and allows you to match your buildings color theme.

Please specify RAL Color for correct matching. Standard color swatches available.



Powderpainted Frame

Door Height						
Width		8'	10'	12'	14'	16'
	10'	UPG-PPAINT-10X08	UPG-PPAINT-10X10	UPG-PPAINT-10X12	UPG-PPAINT-10X14	UPG-PPAINT-10X16
	12'	UPG-PPAINT-12X08	UPG-PPAINT-12X10	UPG-PPAINT-12X12	UPG-PPAINT-12X14	UPG-PPAINT-12X16
	14'	UPG-PPAINT-14X08	UPG-PPAINT-14X10	UPG-PPAINT-14X12	UPG-PPAINT-14X14	UPG-PPAINT-14X16
	16'	UPG-PPAINT-16X08	UPG-PPAINT-16X10	UPG-PPAINT-16X12	UPG-PPAINT-16X14	UPG-PPAINT-16X16

### Anodized Door Frame Finish

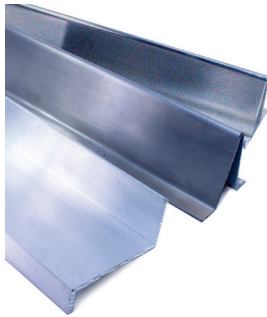
Choose from a number of anodized colors for protection of your Survivor or Ultraclear doors. Call for color availability.

Door Height						
Width		8'	10'	12'	14'	16'
	10'	UPG-ANOD-10X08	UPG-ANOD-10X10	Consult Factory Other Sizes Available		
	12'	UPG-ANOD-12X08	UPG-ANOD-12X10			
	14'					
	16'					



# SPECIALTY GARAGE DOORS

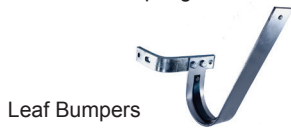
## Specialty Garage Door Options



Top Section Struts



Pusher Springs



Leaf Bumpers



Made In U.S.A.

### Operator Preparation/Misc. Struts

Part #	Description
ZSTRUT-10	Aluminum Z Strut, 10'
ZSTRUT-12	Aluminum Z Strut, 12'
ZSTRUT-14	Aluminum Z Strut, 14'
ZSTRUT-16	Aluminum Z Strut, 16'
ZSTRUT-18	Aluminum Z Strut, 18'
ZSTRUT-XX	Aluminum Z Strut, 20' to 30'

### Pusher Springs/Leaf Bumpers

Part #	Description
SPG15	27" Pusher Springs, Galvanized
SPS15	15" Pusher Springs, Stainless Steel
SL100	Leaf Bumper with Bracket

### Dummy Sections

Recommended for use with horizontal mounted Numax or other drawbar openers with more than 12" Highlift.

Description
Polycarbonate Dummy Section (incl. extra hardware, springs)
1/8" Tempered Glass Dummy Section (incl. extra hardware, springs)
<b>Standard dummy section sizes- 18", 21" &amp; 24" high.</b>
<b>Other custom sizes are available.</b>

## Mechanical Room/Attic Application Kits

### Mechanical Room Application Kits

#### Silver Model

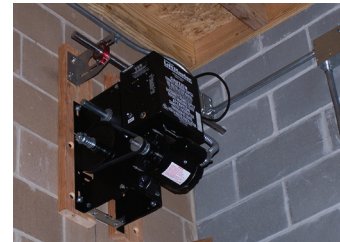
- 1 - 6' Keyed Galvanized Shaft
- 2 - Universal Galvanized Brg. Plates
- 2 - Standard Greaseable Brgs
- 1 - Painted Shaft Coupler
- 2 - 1/4" Galvanized Keys

#### Gold/Platinum Model

- 1 - 6' Keyed Stainless Steel Shaft
- 2 - Universal Stainless Steel Brg. Plates
- 2 - Stainless Steel Greaseable Brgs
- 1 - Specialty Coated Shaft Coupler
- 2 - 1/4" Stainless Steel Keys



Attic Kit



Mechanical Room Kit

Part #	Description
MRS5	5' Silver Mechanical Room Kit
MRG5	5' Gold/Platinum Mechanical Room Kit
MRA6	Attic Application Kit, (6'- #50 Waterproof Chain)



# SPECIALTY GARAGE DOORS

## Specialty Garage Door Options

### Replacement Sections

#####								

### Individual Replacement Sections


## Section Components

### Taped Polycarbonate

Description
Polycarbonate Sheet- Taped (Specify Length & Width)

### Rails

Part #	Description
BRXXX	Aluminum Bottom Rail
TRXXX	Aluminum Top Rail

### End Stiles

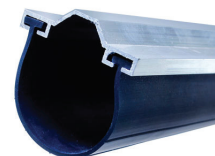
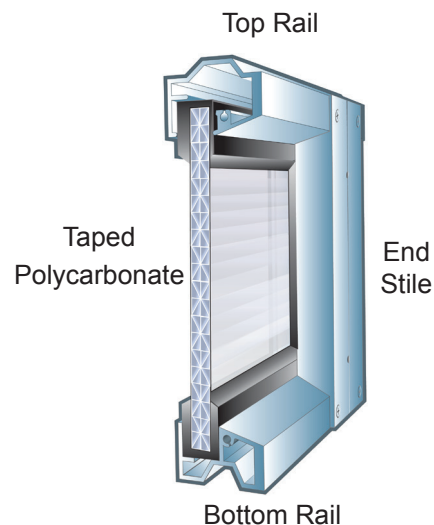
Part #	Description
ESM24	24" Aluminum End Stile
ESM21	21" Aluminum End Stile
ESM18	18" Aluminum End Stile

### Center Stiles

Part #	Description
CSM24	24" Aluminum Center Stile
CSM21	21" Aluminum Center Stile
CSM18	18" Aluminum Center Stile
CSFM24	24" Aluminum Full Vision/Glass Center Stile
CSFM21	21" Aluminum Full Vision/Glass Center Stile
CSFM18	18" Aluminum Full Vision/Glass Center Stile

### Bottom Seal/Aluminum Retainers

Part #	Description
WRG-10	Bottom Aluminum Bulb Seal Retainer 10'2"
WRG-12	Bottom Aluminum Bulb Seal Retainer 12'2"
WRG-14	Bottom Aluminum Bulb Seal Retainer 14'2"
WRG-16	Bottom Aluminum Bulb Seal Retainer 16'2"
WRR400-V	Bottom Vinyl Bulb Seal



Bulb Seal Retainer & Seal

# GARAGE DOOR HARDWARE



**HINGES & FACE HARDWARE  
ROLLERS**

**TRACK**

**COUNTERBALANCE COMPONENTS**

**TORSION SPRINGS**

**CABLE**



Made In U.S.A.

**Stainless steel, specialty and standard hardware**



# DOOR HARDWARE



Made In U.S.A.

## Stainless Steel. Ready for the Challenge.

The proper garage door hardware is essential for keeping high-moisture environments as free from corrosion and rust as possible. Choosing stainless steel means more days up and running. It also means saving time and money down the road. For door systems to thrive under extreme conditions, stainless steel is the best material for the job, and outlasts all other materials available in the market.

We strongly recommend stainless steel hardware for these extreme applications or for other hard-working environments.

### Stainless Steel. Reliable and Ideal for Any Corrosive Environment!

#### Universal Design

Fits almost any sectional door. Easy to install!

#### Rust-Resistant

Manufactured with high quality 304 stainless steel for unequalled corrosion resistance and durability in any corrosive applications.

#### Wear and Crack Resistant

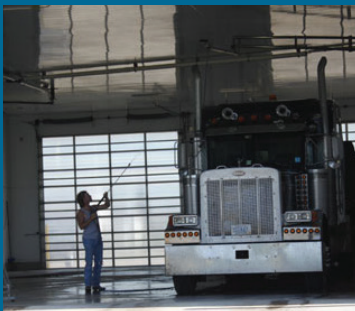
Designed and manufactured for dependability in punishing high use environments.

#### Clean

Excellent in any clean room or wash down area requiring minimal bacteria growth in high moisture environments.

## Applications

- Car Washes
- Truck, Bus, and Commercial Vehicle Washes
- Marine Environments
- Livestock Barns
- Dairy Creameries
- Food Processing Plants
- Sugar Processing Plants
- Vegetable Storage Facilities
- Agricultural Facilities
- Chemical & Fertilizer Plants
- Slaughterhouses and Meat Processing Plants
- Water Treatment Plants
- Cement Yards
- Poultry Farms
- Salt/Brine Sheds
- Material Handling Areas
- Coastline Residential Areas
- Mining Areas
- Cold Storage Applications



Call 800-233-1487 or go online to [stainlessgaragedoorparts.com](http://stainlessgaragedoorparts.com)



# DOOR HARDWARE

## Hinges & Face Hardware

### Stainless Steel Face Hardware

High-quality 304L stainless steel provides clean, tough and rust-resistant durability even in the most brutal applications. Universal hardware fits almost any sectional door. Wear and crack-resistant design improves door reliability and prolongs service life in wet, corrosive and dirty conditions.



HS112



HS312



HS712



HTUS



HSCFV112

### Stainless Steel Hinges

Part #	Description
HS112	#1 Stainless Steel Hinge, 12 ga.
HS212	#2 Stainless Steel Hinge, 12 ga.
HS312	#3 Stainless Steel Hinge, 12 ga.
HS412	#4 Stainless Steel Hinge, 12 ga.
HS512	#5 Stainless Steel Hinge, 12 ga.
HS612	#6 Stainless Steel Hinge, 12 ga.
HS712	#7 Stainless Steel Hinge, 12 ga.
HS812	#8 Stainless Steel Hinge, 12 ga.
HS912	#9 Stainless Steel Hinge, 12 ga.
HS1012	#10 Stainless Steel Hinge, 12 ga.
HS1112	#11 Stainless Steel Hinge, 12 ga.
HS1212	#12 Stainless Steel Hinge, 12 ga.
HSCC112	Stainless Hinge, Comb., C-Style
HSCFV112	Stainless Hinge, Full Vision, C-Style
HSO112	Stainless Steel 1/2 Hinge OHD Style



HSO112



HSCC112



HTLS



HBS2U

### Stainless Steel Bottom Fixtures

Part #	Description
HBS138U	Stainless Steel Bottom fixtures, 1-3/8" Door, 2" or 3" Track. Single End Stile
HBS2U	Stainless Steel Bottom Fixtures, 1-5/8"-2" Door, 2" or 3" Track, Single End Stile
HBS3U	Stainless Steel Bottom Fixtures, 3" Door, 2" or 3" Track, Single End Stile
HBS2UD	Stainless Steel Bottom Fixtures, 1-5/8"-2" Door, 2" or 3" Track, Double End Stile
HBS3UD	Stainless Steel Bottom Fixtures, 3" Door, 2" or 3" Track, Double End Stile
HBS23LU	Stainless Steel LHR BitM Fixtures, 2" or 3" Door, 2" or 3" Track. Single End Stile
HBS23LU-H	Stainless Steel LHR BitM Brackets, 2" or 3" Door, 2" or 3" Track. Single End Stile
HBS23LUD-H	Stainless Steel LHR BitM Fixture, 2" or 3" Door, 2" or 3" Track. Double End Stile



Made In U.S.A.

**316 Grade  
Stainless Steel  
Also Available**

### Stainless Steel Top Fixtures- Heavy Duty 11 ga.

Part #	Description
HTUS	Univ. Stainless Steel Top Fixture
HTUSH	Univ. Stainless Steel Top Fixture, Tall Use for doors with # 9 or above top hinge
HTLS	Low-Headroom Stainless Steel Top Fixture



# DOOR HARDWARE

Improve your look with  
**Electropolishing**



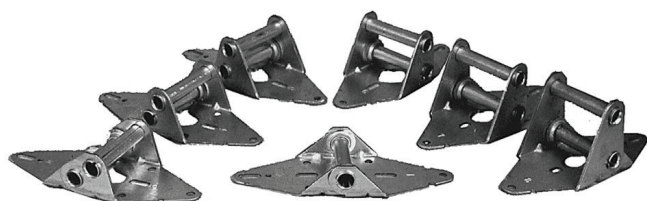
## What is Electropolishing?

Electropolishing gives stainless steel the most superior shine possible. This process gives your facility that brand-new, untouched look and creates an extremely smooth surface that's easy to clean. Electropolishing even adds an extra degree of corrosion resistance.

Our electropolished stainless steel hardware is perfect for applications like custom garages, restaurants, auto dealerships, and fire departments. **Questions?**

**Call us today to learn more.**

## Galvanized Hinges & Face Hardware



### Galvanized Hinges- Heavy Duty 11 ga.

Part #	Description
H111	#1 Galvanized Steel Hinge, 11 ga.
H211	#2 Galvanized Steel Hinge, 11 ga
H311	#3 Galvanized Steel Hinge, 11 ga.
H411	#4 Galvanized Steel Hinge, 11 ga.
H511	#5 Galvanized Steel Hinge, 11 ga.
H611	#6 Galvanized Steel Hinge, 11 ga.
H711	#7 Galvanized Steel Hinge, 11 ga.
H811	#8 Galvanized Steel Hinge, 11 ga.
H911	#9 Galvanized Steel Hinge, 11 ga.
H1011	#10 Galvanized Steel Hinge, 11 ga.
H1111	#11 Galvanized Steel Hinge, 11 ga.
H1211	#12 Galvanized Steel Hinge, 11 ga.

### Galvanized Bottom Fixtures- Heavy Duty

Part #	Description
HB2U	Galvanized Steel Bottom Brackets 1-5/8- 2" Door, 2" or 3" Track
HB2UD	Galvanized Steel Bottom Brackets 1-5/8- 2" Door, 2" or 3" Track
HB3U	Galvanized Steel Bottom Brackets 3" Door, 2" or 3" Track
HB3UD	Galvanized Steel Bottom Brackets 3" Door, 2" or 3" Track

### Galvanized Top Fixtures- Heavy Duty 11 ga.

Part #	Description
HTU	Universal Galv. Steel Top Fixture
HTL	Low Hdroom Galv. Steel Top Fixture

## Hinge Screws



### Stainless Steel Hinges Screws

Part #	Description
TAOS141W	Stainless Hinge Tek Screws 1/4" x 1" Self-Driller w/ Washer
TAPS1458W	Stainless Hinge Screws 1/4" x 5/8" Self-Threader w/ Washers
LAGS141W	Stainless Wood Lag 1/4" x 1" Washer Head
LAGS14125W	Stainless Wood Lag 1/4" x 1-1/4" Washer Head
LAGS1415W	Stainless Wood Lag 1/4" x 1-1/2" Washer Head

### Galvanized Hinges Screws

Part #	Description
TAOZ141W	Galvanized Hinge Tek Screws 1/4" x 1" Self-Driller w/ Washer
TAPZ1458W	Galvanized Hinge Screws 1/4" x 5/8" Self-Threader w/ Washer
TAOZ5161	Galvanized Hinge Tek Screws 5/16" x 1" Self-Driller
TABZ1458	Galvanized Hinge Screws For Steel Doors- Sheet Metal Style, 1/4" x 5/8" AB Type
LAGZ141	Galvanized Steel Wood Lag 1/4" x 1" Hexhead



# DOOR HARDWARE

## Hinges and Face Hardware Kits

Use our face hardware kits to equip your favorite door with the hinges and hardware that it needs for your new, renovation or repair project.

Kits include: top and bottom fixtures, center hinges, end hinges and hinge screws for hardware attachment. Kits are configured for 1-5/8" to 2" door thickness. Other door thicknesses available.



### Stainless Steel Face Hardware Kits

Use our convenient stainless steel face hardware kits to equip your favorite door with 304L rust-resistant stainless steel hardware. (Kits include: top and bottom fixtures, center hinges, end hinges and hinge screws) All hardware is heavy duty 12 ga. stainless steel material.

Order your kit by the number of door sections in height and number of panels in width.

3" Track- Single End Stile					
Sections High	2 Panels	3 Panels	4 Panels	5 Panels	6 Panels
4	FHKS3S-42	FHKS3S-43	FHKS3S-44	FHKS3S-45	FHKS3S-46
5	FHKS3S-52	FHKS3S-53	FHKS3S-54	FHKS3S-55	FHKS3S-56
6	FHKS3S-62	FHKS3S-63	FHKS3S-64	FHKS3S-65	FHKS3S-66
7	FHKS3S-72	FHKS3S-73	FHKS3S-74	FHKS3S-75	FHKS3S-76
8	FHKS3S-82	FHKS3S-83	FHKS3S-84	FHKS3S-85	FHKS3S-86

3" Track- Double End Stile					
Sections High	2 Panels	3 Panels	4 Panels	5 Panels	6 Panels
4	FHKS3D-42	FHKS3D-43	FHKS3D-44	FHKS3D-45	FHKS3D-46
5	FHKS3D-52	FHKS3D-53	FHKS3D-54	FHKS3D-55	FHKS3D-56
6	FHKS3D-62	FHKS3D-63	FHKS3D-64	FHKS3D-65	FHKS3D-66
7	FHKS3D-72	FHKS3D-73	FHKS3D-74	FHKS3D-75	FHKS3D-76
8	FHKS3D-82	FHKS3D-83	FHKS3D-84	FHKS3D-85	FHKS3D-86

2" Track- Single End Stile					
Sections High	2 Panels	3 Panels	4 Panels	5 Panels	6 Panels
4	FHKS2S-42	FHKS2S-43	FHKS2S-44	FHKS2S-45	FHKS2S-46
5	FHKS2S-52	FHKS2S-53	FHKS2S-54	FHKS2S-55	FHKS2S-56
6	FHKS2S-62	FHKS2S-63	FHKS2S-64	FHKS2S-65	FHKS2S-66
7	FHKS2S-72	FHKS2S-73	FHKS2S-74	FHKS2S-75	FHKS2S-76
8	FHKS2S-82	FHKS2S-83	FHKS2S-84	FHKS2S-85	FHKS2S-86

2" Track- Double End Stile					
Sections High	2 Panels	3 Panels	4 Panels	5 Panels	6 Panels
4	FHKS2D-42	FHKS2D-43	FHKS2D-44	FHKS2D-45	FHKS2D-46
5	FHKS2D-52	FHKS2D-53	FHKS2D-54	FHKS2D-55	FHKS2D-56
6	FHKS2D-62	FHKS2D-63	FHKS2D-64	FHKS2D-65	FHKS2D-66
7	FHKS2D-72	FHKS2D-73	FHKS2D-74	FHKS2D-75	FHKS2D-76
8	FHKS2D-82	FHKS2D-83	FHKS2D-84	FHKS2D-85	FHKS2D-86

## Stainless Steel.

## Tough. Lasting. Functional.

Stainless steel adds longevity to your door system and actually improves function by eliminating the maintenance that rust and corrosion require in wet, dirty and corrosive environments. The products we manufacture are universally fitting to any sectional door and are easy to install. The proven quality of our designs adds life to your door system, reducing the possibility of cracking or breaking down—even with the continual use and wear demanded by most environments. And after all that, stainless steel helps maintain a high-quality and clean appearance for many years.



Made In U.S.A.



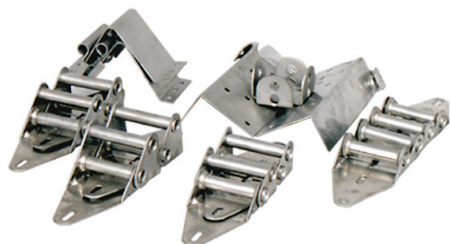
800-233-1487 ★ Fax: (218) 751-6551 ★ Carwashdoors.com

# DOOR HARDWARE

## Hinges and Face Hardware Kits

### Galvanized Steel Face Hardware Kits

Use our convenient galvanized face hardware kits to equip your favorite door. Kits include: top and bottom fixtures, center hinges, end hinges and self-drilling hinge screws. All hardware is heavy duty 11 ga. steel material. Order your kit by the number of door sections in height and number of panels in width.



#### 3" Track- Single End Style

Sections High	2 Panels	3 Panels	4 Panels	5 Panels	6 Panels
4	FHKG3S-42	FHKG3S-43	FHKG3S-44	FHKG3S-45	FHKG3S-46
5	FHKG3S-52	FHKG3S-53	FHKG3S-54	FHKG3S-55	FHKG3S-56
6	FHKG3S-62	FHKG3S-63	FHKG3S-64	FHKG3S-65	FHKG3S-66
7	FHKG3S-72	FHKG3S-73	FHKG3S-74	FHKG3S-75	FHKG3S-76
8	FHKG3S-82	FHKG3S-83	FHKG3S-84	FHKG3S-85	FHKG3S-86



#### 3" Track- Double End Style

Sections High	2 Panels	3 Panels	4 Panels	5 Panels	6 Panels
4	FHKG3D-42	FHKG3D-43	FHKG3D-44	FHKG3D-45	FHKG3D-46
5	FHKG3D-52	FHKG3D-53	FHKG3D-54	FHKG3D-55	FHKG3D-56
6	FHKG3D-62	FHKG3D-63	FHKG3D-64	FHKG3D-65	FHKG3D-66
7	FHKG3D-72	FHKG3D-73	FHKG3D-74	FHKG3D-75	FHKG3D-76
8	FHKG3D-82	FHKG3D-83	FHKG3D-84	FHKG3D-85	FHKG3D-86

#### 2" Track- Single End Style

Sections High	2 Panels	3 Panels	4 Panels	5 Panels	6 Panels
4	FHKG2S-42	FHKG2S-43	FHKG2S-44	FHKG2S-45	FHKG2S-46
5	FHKG2S-52	FHKG2S-53	FHKG2S-54	FHKG2S-55	FHKG2S-56
6	FHKG2S-62	FHKG2S-63	FHKG2S-64	FHKG2S-65	FHKG2S-66
7	FHKG2S-72	FHKG2S-73	FHKG2S-74	FHKG2S-75	FHKG2S-76
8	FHKG2S-82	FHKG2S-83	FHKG2S-84	FHKG2S-85	FHKG2S-86

#### 2" Track- Double End Style

Sections High	2 Panels	3 Panels	4 Panels	5 Panels	6 Panels
4	FHKG2D-42	FHKG2D-43	FHKG2D-44	FHKG2D-45	FHKG2D-46
5	FHKG2D-52	FHKG2D-53	FHKG2D-54	FHKG2D-55	FHKG2D-56
6	FHKG2D-62	FHKG2D-63	FHKG2D-64	FHKG2D-65	FHKG2D-66
7	FHKG2D-72	FHKG2D-73	FHKG2D-74	FHKG2D-75	FHKG2D-76
8	FHKG2D-82	FHKG2D-83	FHKG2D-84	FHKG2D-85	FHKG2D-86



Can't find what you are looking for?  
Please call 1-800-233-1487 and let  
us go to work for you!

# DOOR HARDWARE



# DOOR HARDWARE

## Specialty Garage Door Rollers



Made In U.S.A.



### The Magnum Difference!

Innovative design, advanced engineering and superior materials make Magnum garage door rollers the only choice to compliment your high quality door system.

These functionally superb rollers are much stronger, quieter, more maintenance-free and have a higher cycle life than other rollers on the market.

Magnum garage door rollers are designed to withstand the harshest conditions you can come up with. Sealed precision ball bearing construction provides excellent load rating and bearing seals prevent problem elements from damaging the raceways. Ultra-high density polyethylene tire, stainless steel stem and collar ensures rust-free durability and high strength in any situation.

Specify the original Magnum rollers for any high use, dirty, wet and/or quiet area or choose the new Magnum SP Supreme for extreme durability in the worst wet and corrosive applications.



### Original Magnum™ Car Wash Rollers

Dependable, Quiet and Tough!!

Magnum rollers have been a favorite throughout the industry. Sealed bearing design, UHMW tire and stainless steel stem and collar provides excellent life in high use and corrosive environments.



Use for any high cycle, high moisture environment.

### Original Magnum™ Rollers

Bearing: Double-Sealed Precision  
Ball Bearings: High Carbon Chrome Steel  
Raceways: High Carbon Chrome Steel  
Tire: UHMW Polyethylene  
Tire Face: Shielded Inner Face  
Stem: 304 Stainless Steel  
Collar: 304 Stainless Steel

Part #	Description
RMS3147	3" Magnum Rollers (Short Stem- 4-1/2")
RMS3197	3" Magnum Rollers (Long Stem- 9")
RMS2147	2" Magnum Rollers (Short Stem- 4-1/2")
RMS2197	2" Magnum Rollers (Long Stem- 9")



### Magnum™ Supreme Rollers

Bearing: Double-Sealed Precision  
Ball Bearings: Stainless Steel  
Raceways: Stainless Steel  
Tire: UHMW Polyethylene  
Tire Face: Shielded Inner Face  
Stem: 304 Stainless Steel  
Collar: 304 Stainless Steel

### Magnum Supreme™ Extreme Condition Rollers

The new Magnum SPTM roller ensures unequalled performance, reliability and maximum durability in the most extreme environments.

The new design feature tough, maintenance-free stainless steel raceways with stainless steel ball bearings that require zero lubrication. Specifically designed for wet, high cycle and corrosive environments; the unique Magnum SP bearing design results in less corrosion and freeze-ups providing quiet, smooth and free-turning operation cycle after cycle.

Other features are high-strength, stainless steel stems and tough UHMW tire with new snap-lock design that eliminates snap ring failure.

Part #	Description
RMSP3147	3" Supreme Rollers (Short Stem- 4-1/2")
RMSP3197	3" Supreme Rollers (Long Stem- 9")
RMSP2147	2" Supreme Rollers (Short Stem- 4-1/2")
RMSP2197	2" Supreme Rollers (Long Stem- 9")



# DOOR HARDWARE

## Specialty Garage Door Rollers

### Stainless Steel Bearingless Rollers

Constructed of the finest rust-resistant materials available in the industry, our bearingless rollers are ideal for wet & corrosive applications where durability reliability are crucial.

Field proven design minimizes door problems associated with rollers and keeps your door functioning quietly and reliably cycle after cycle in any tough application.

Bearingless rollers are ideal for light to medium weight doors in any situation. An excellent product to compliment any polycarbonate door package.

Choose our bearingless rollers in high moisture areas, such as car, truck or bus washes, along with marine environments, storage facilities, and many more.



Part #	Description
RMSBL3147	3" Bearingless Rollers (Short Stem- 4-1/2")
RMSBL3197	3" Bearingless Rollers (Long Stem- 9")
RMSBL2147	2" Bearingless Rollers (Short Stem- 4-1/2")
RMSBL2197	2" Bearingless Rollers (Long Stem- 9")

### Bearingless Rollers

**Bearing:** None  
**Ball Bearings:** None  
**Raceways:** None  
**Tire:** UHMW Polyethylene  
**Stem:** 304 Stainless Steel

## Specialty Garage Door Roller Kits

Use our specialty roller kits for your next new, replacement or renovation project.

Select from a our high-performance specialty rollers for the package that best fits your project. Just order for the height of your door and the number of end stiles.

Single End Stile kits include four long stem rollers for the top and bottom brackets- Double end stile kits include all long stem rollers. 8' high kits include a total of 10 rollers.



Magnum™ Roller Kits					
Sealed Bearings	Door Height				
	8'	10'	12'	14'	16'
Single End Stile	RMSKS3-08	RMSKS3-10	RMSKS3-12	RMSKS3-14	RMSKS3-16
Double End Stile	RMSKD3-08	RMSKD3-10	RMSKD3-12	RMSKD3-14	RMSKD3-16

Magnum™ Supreme Roller Kits w/ Stainless Steel Bearing					
Stainless Bearings	Door Height				
	8'	10'	12'	14'	16'
Single End Stile	RMSPKS3-08	RMSPKS3-10	RMSPKS3-12	RMSPKS3-14	RMSPKS3-16
Double End Stile	RMSPKD3-08	RMSPKD3-10	RMSPKD3-12	RMSPKD3-14	RMSPKD3-16

# DOOR HARDWARE

## Garage Door Track Systems



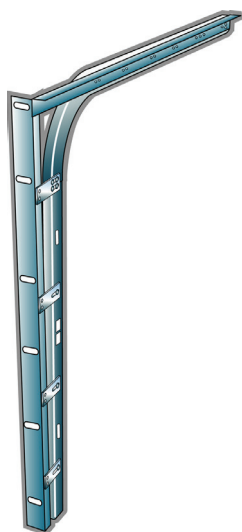
Made In U.S.A.

3" Full Angle Mount

### Track Features

304L Stainless Steel Construction  
Heavy Duty 12 ga. Material  
Smooth True Radius- No Facets!  
Structurally Sound Full Angle Mount  
Universal- Fits Most Garage Doors  
Proven Quality Designs  
Heavy Duty Materials  
Easy Installation

316 Grade  
Stainless Steel  
Also Available



2" Clip Angle Mount

### Stainless Steel Garage Door Track

Clean, rust-resistant, stainless steel track is ideal for just about any nasty, wet, dirty, corrosive, or brutal environment and is also an excellent addition to any high-quality special crafted door or carriage house door package.

Constructed with high-quality 304L stainless steel material, the track radius is completely roll-formed with no weldments. A complete line of configurations are offered such as standard lift, extended vertical, highlift, vertical lift and low-headroom. For track sets not listed, please consult factory.

Use for applications such as: slaughterhouses, creameries, poultry farms, industrial processing plants, livestock barns, marine/coastal environments, mining, cement yards, chemical plants, car/truck wash facilities & many more.

#### 3 Inch Stainless Steel Track- 12 ga., Full Angle Mount

Height	Standard Lift	Highlift w/ Extension	Vertical Lift
8'	TAS308-SL	TAS308-HL	TAS308-VL
10'	TAS310-SL	TAS310-HL	TAS310-VL
12'	TAS312-SL	TAS312-HL	TAS312-VL
14'	TAS314-SL	TAS314-HL	TAS314-VL
16'	TAS316-SL	TAS316-HL	TAS316-VL
18'	TAS318-SL	TAS318-HL	TAS318- VL
20'	TAS320-SL	TAS320-HL	TAS320-VL

#### 2 Inch Stainless Steel Track- 14 ga., Clip Angle Mount

Height	Standard Lift	Highlift w/Extension	Vertical Lift
8'	TAS208-SL-C	TAS208-HL-C	TAS208-VL-C
10'	TAS210-SL-C	TAS210-HL-C	TAS210-VL-C
12'	TAS212-SL-C	TAS212-HL-C	TAS212-VL-C
14'	TAS214-SL-C	TAS214-HL-C	TAS214-VL-C
16'	TAS216-SL-C	TAS216-HL-C	TAS216-VL-C

#### 2 Inch Stainless Steel Track- 14 ga., Bracket Mount

Height	Standard Lift	Highlift w/ Extension
7'	TAS207-SL-B	TAS207-HL-B
8'	TAS208-SL-B	TAS208-HL-B
10'	TAS210-SL-B	TAS210-HL-B
12'	TAS212-SL-B	TAS212-HL-B
14'	TAS214-SL-B	TAS214-HL-B

Headplates and bearing plates sold separately. Please see counterbalance system hardware on pages 28-30.

#### Highlift J-Brackets- add (2) J-Brackets for Highlift models over 48", (4) for over 72"

Part #	Description
JBSHL-10	J- Bracket, Highlift Support, Stainless, 10", 12 ga.
JBSVL-16	J- Bracket, Highlift/Vertical Support, Stainless, 16", 12 ga.
JBHL-10	J- Bracket, Highlift Support, Galvanized, 10", 12 ga.

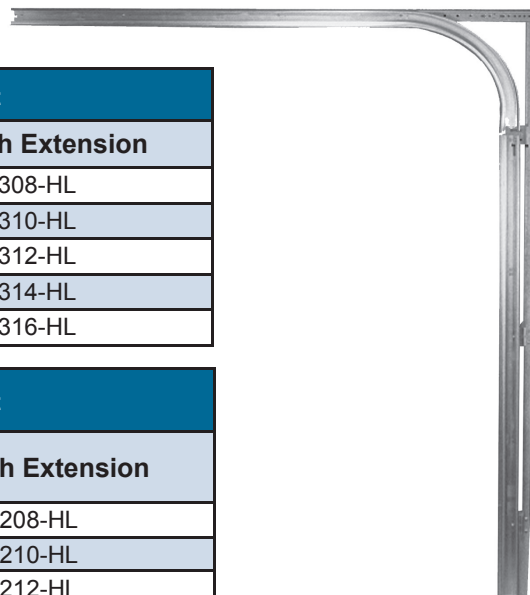


# DOOR HARDWARE

## Galvanized Steel Garage Door Track

3 Inch Galvanized Steel Track- 12 ga., Clip Angle Mount		
Height	Standard Lift	Highlift with Extension
8'	TAGC308-SL	TAGC308-HL
10'	TAGC310-SL	TAGC310-HL
12'	TAGC312-SL	TAGC312-HL
14'	TAGC314-SL	TAGC314-HL
16'	TAGC316-SL	TAGC316-HL

2 Inch Galvanized Steel Track- 14 ga., Clip Angle Mount		
Height	Standard Lift	Highlift with Extension
8'	TAGC208-SL	TAGC208-HL
10'	TAGC210-SL	TAGC210-HL
12'	TAGC212-SL	TAGC212-HL
14'	TAGC214-SL	TAGC214-HL
16'	TAGC216-SL	TAGC216-HL



2" or 3"  
Clip Angle Mount

## Track Bolts/ Nuts and Lags

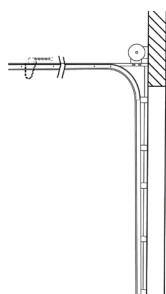
Part Number	Description
TBLT1458SS	Track Bolt, 1/4" x 5/8", Stainless Steel
NUTFS14	Flange Nut, 1/4", Stainless Steel
TBLTZ1458	Track Bolt, 1/4" x 5/8" - Galvanized
NUTFZ14	Flange Nut, 1/4", Galvanized
LAG516158P	Wood Lag, 5/16" x 1-5/8", Plated
LAGZ516158	Wood Lag, 5/16" x 1-5/8", Galvanized
LAG5163	Wood Lag, 5/16" x 3", Galvanized



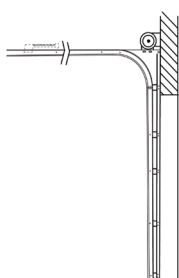
## Typical Track Configurations

American Garage Door Supply offers a complete line of track configurations to match your building and operational requirements. Other special track configurations available.

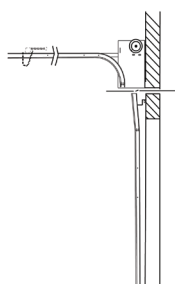
**Can't find the right configuration for your project?**  
**Give us a call at 1-800-233-1487 and let us go to work for you!**



Standard Lift



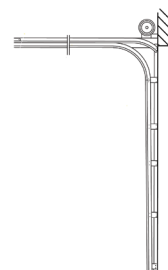
Extended Vertical



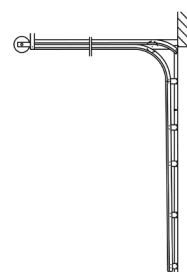
Highlift



Vertical Lift



Low-Headroom (Front)

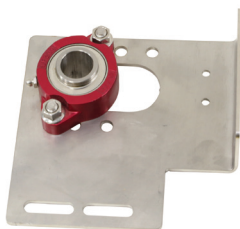


Low-Headroom (Rear)



# DOOR HARDWARE

## Counterbalance Hardware



End Bearing Plate



Universal Center



Highlift Headplate w/Bearing

### Bearing Plate Assemblies

Choose from a complete line of assembled bearing plate assemblies to make your next project a success. Assemblies include either a stainless steel or galvanized bearing plate with a greaseable bearing installed. Bearing insert material options include stainless steel with an aluminum/stainless steel housings or standard chromate insert with painted metal.

### Stainless Steel Bearing Plate Assemblies- 304L Series

Center Bearing Plate Assemblies- 11 ga. Stainless Steel with PBSS-AL Bearing	
Part #	Description
PBSS-BCS338	3-3/8" Stainless Steel Center Plate w/Brg
PBSS-BCS438	4-3/8" Stainless Steel Center Plate w/Brg
PBSS-BCS438-6	4-3/8" Stainless Steel Center Plate w/Brg, for 6" Spgs
PBSS-BCS500	5" Stainless Steel Center Plate w/Brg
PBSS-BCS500-6	5" Stainless Steel Center Plate w/Brg, for 6" Spgs
PBSS-BCS600	6" Stainless Steel Center Plate w/Brg
PBSS-BCS600-6	6" Stainless Steel Center Plate w/Brg, for 6" Spgs
PBSS-BCUS-R	Stainless Steel Universal Center w/Brg., RH
PBSS-BCUS-L	Stainless Steel Universal Center w/Brg., LH

End Bearing Plate Assemblies- 11 ga. Stainless Steel with PBSS-AL Bearing	
Part #	Description
PBSS-BFS345	3-3/8" to 4-3/8" Adj. S.S End Plate w/Brg
PBSS-BFS345-T	3-3/8" to 4-3/8" Adj. S.S End Plate w/Brg- for 800 drums
PBSS-BFS56	5" to 6" Adj. S.S End Plate w/Brg

## Stainless Steel.

**Tough, Rust-Resistant!**  
**Perfect for any Wet or Corrosive Environment!**



Made In U.S.A.

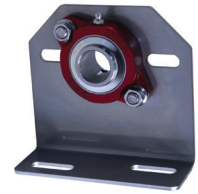
Highlift Headplates Assemblies- 11 ga. Stainless Steel with PBSS-AL Bearing	
Part #	Description
PBSS-HLHS345-3	Headplate Highlift, SS, 2" or 3" Track, 3-3/8", 4-3/8" or 5" w/Brg
PBSS-HLHS6-3W	Headplate Set, SS, Highlift, Wide 2"-3" Track w/Brg. Extra wide, 6" Offset
PBSS-VLHPSB	Headplate Vertical Lift, SS, 2" or 3" Track w/Brg

# DOOR HARDWARE

## Galvanized Steel Bearing Plate Assemblies

### Center Bearing Plate Assemblies- 11 ga. with PBSLB Painted Greaseable Bearing

Part #	Description
PBSLB-BC338	3-3/8" Galvanized Steel Center Plate w/Brg
PBSLB-BC438	4-3/8" Galvanized Steel Center Plate w/Brg
PBSLB-BC438-6	6" Galvanized Steel Center Plate w/Brg, Wide, For 6" Spgs.
PBSLB-BC500	5" Galvanized Steel Center Plate w/Brg
PBSLB-BC500-6	6" Galvanized Steel Center Plate w/Brg, Wide, For 6" Spgs
PBSLB-BC600	6" Galvanized Steel Center Plate w/Brg For 6" Spgs
PBSLB-BC600-6	6" Galvanized Steel Center Plate w/Brg- for 6" Springs
PBSLB-BCU-R	Universal Galvanized Steel Center Plate w/Brg, RH
PBSLB-BCU-L	Universal Galvanized Steel Center Plate w/Brg, LH



Center Bearing Plate

### End Bearing Plate Assemblies- 11 ga. with PBSLB Painted Greaseable Bearing

Part #	Description
PBSLB-BF338S	3-3/8" Galvanized Steel End Plate w/Brg
PBSLB-BF438S	4-3/8" Galvanized Steel End Plate w/Brg
PBSLB-BF500S	5" Galvanized Steel End Plate w/Brg
PBSLB-BF600S	6" Galvanized Steel End Plate w/Brg



Vertical Lift Headplate

### Highlift Headplates Assemblies- 11 ga. with PBSLB Painted Greaseable Bearing

Part #	Description
PBSLB-HLH345-3	Headplate HiLift, Galvanized, 3" Track, 3-3/8", 4-3/8" or 5" w/Brg
PBSLB-HLH6-3W	Headplate HiLift, Galvanized, 2"/3" Track, 6" w/Brg., Extra wide, 6" Offset
PBSLB-VLHPG	Headplate Vertical Lift, Galv., 2" or 3" Track w/Brg



Spread Bar

### Spreader Bars- Shaft Support Brackets

Part #	Description
PBSS-BS100S	Shaft Support Bracket, Galv, (Spreader Bar) 16" to 22"
B1-BS100	Shaft Support Bracket, Galv, (Spreader Bar) 16-in to 22-in with Freeway Bearings

## Track/Bearing Plate Connection Fasteners



Stainless Steel	
Part #	Description
CBLTS381	Carriage Bolt, 3/8" x 1", SS
NUTFS38	Flange Nut, 3/8", SS
HBLTS381	Hexhead Bolt, 3/8" x 1", SS
HBLTS3815	Hexhead Bolt, 3/8" x 1-1/2", SS
HBLTS3825	Hexhead Bolt, 3/8" x 2-1/2", SS
WASHS38	Washer, 3/8", SS



Galvanized	
Part #	Description
CBLTZ381	Carriage Bolt, 3/8" x 1", Galv.
NUTFZ38	Flange Nut, 3/8", Galv.
HBLTZ381	Hexhead Bolt, 3/8" x 1", Gal.
HBLTZ3815	Hexhead Bolt, 3/8" x 1-1/2", Galv.
HBLTZ3825	Hexhead Bolt, 3/8" x 2-1/2", Galv.
WASHZ38	Washer 3/8", Galv.



# DOOR HARDWARE

## Torsion Shaft Bearings



PBSS-AL

Greaseable Bearings	
Part #	Description
PBSS-AL	1" Stainless Steel Greaseable Bearing Includes Anodized Aluminum Housing
PBSS-SS	1" Stainless Steel Greaseable Bearing Includes Stainless Steel Housing
PBSS-SS-125	1-1/4" Stainless Steel Greaseable Bearing Includes Stainless Steel Housing
PBSLB	1" Greaseable Bearing- Painted Housing Includes Painted Cast Iron Housing
PBSLB-114	1-1/4" Greaseable Bearing- Painted Housing Includes Painted Cast Iron Housing



B100

Standard Commercial Bearings	
Part #	Description
B100	1" Standard Freeway Steel Bearing
B125	1-1/4" Standard Freeway Steel Bearing
B100-N	1" Standard Freeway Nylon Bushing

## Torsion Shafts



Torsion Shafts

Stainless Steel Shafts	
Part #	Description
SH100S20	1" Stainless, Hollow, 20', .083
SSK100S-05	1" Stainless, Keyed, 5'
SSK100S-06	1" Stainless, Keyed, 6'
SSK100S-12	1" Stainless, Keyed, 12'
SSK125S-12	1-1/4" Stainless, Keyed, 12'

Galvanized Steel Shafts	
Part #	Description
SSK100G-060	Shaft, Keyed, 1", Galv., 5'
SSK100G-078	Shaft, Keyed, 1", Galv., 6' 6" (78 in.)
SSK100G-090	Shaft, Keyed, 1", Galv., 7' 6" (90 in.)
SSK100G-102	Shaft, Keyed, 1", Galv., 8' 6" (102 in.)
SSK100G-183	Shaft, Keyed, 1", Galv., 15' 3" (183 in.)

## Is Stainless Steel Rust-proof?

No metal alloy is safe from rust, but stainless steel is your very best option for fending off corrosion and rust in any high-moisture environment. Time-after-time, stainless steel proves itself as the clear choice for keeping your hardware as rust-free and durable as possible.



# DOOR HARDWARE

## Couplers

Part #	Description
CP100	1" Coupler
CP100C	1" Specialty Coated Coupler
CP125	1" Coupler
CP125C	1" Specialty Coated Coupler



Coupler

## Roller Chain

Waterproof Roller Chain	
Part #	Description
CWP41	#41 Waterproof Chain
CWP50	#50 Waterproof Chain
CMLWP41	#41 Waterproof Master Link
CMLWP50	#50 Waterproof Master Link



Stainless Steel Roller Chain

Stainless Steel Roller Chain	
Part #	Description
CSS41	#41 Stainless Steel Chain
CSS50	#50 Stainless Steel Chain
CMLSS41	#41 Stainless Steel Link
CMLSS50	#50 Stainless Steel Link

## Cable Drums

Standard Lift- Specialty Coated		
Part #	Description	Max. Door Height
400-8SC	Residential, 1" Keyed	12'3"
400-12SC	Light Commercial, 1" Keyed	12'3"
5250-18SC	Commercial, 1" Keyed	18'2"
800-32SC	Heavy Commercial, 1" Keyed	32'1"
800-32SC-125	Heavy Commercial, 1" Keyed	32'1"



Coated Standard Lift

Standard Lift- Standard Die Cast Aluminum		
Part #	Description	Max. Door Height
400-8S	Residential, 1" Keyed	8'3"
400-12S	Light Commercial, 1" Keyed	12'3"
5250-18S	Commercial, 1" Keyed	18'2"
800-32S	Heavy Commercial, 1" Keyed	32'0"
800-32S-125	Heavy Commercial, 1" Keyed	32'0"



Die-Cast Standard Lift

Highlift- Specialty Coated		
Part #	Description	Max. Door Height
400-54SC	Light Commercial, Keyed	11'1" (54" Highlift)
5250-54SC	Commercial, 1" Keyed	12'0" (54" Highlift)
5750-120SC	Commercial, 1" Keyed	15'0" (120" Highlift)
6375-164SC	Heavy Commercial, 1" Keyed	19'0" (164" Highlift)
6375-164SC-125	Heavy Commercial, 1-1/4" Keyed	19'0" (164" Highlift)



Coated Highlift



# DOOR HARDWARE

## Cable Drums



Die Cast Highlift Drum



Coated Vertical Lift Drum



Die Cast Vertical Lift Drum



1/4" Keystock

### Highlift- Standard Die Cast Aluminum

Part #	Description	Max. Door Height
400-54S	Light Commercial, 1" Keyed	11'1" (54" Highlift)
5250-54S	Commercial, 1" Keyed	12'0" (54" Highlift)
5750-120S	Commercial, 1" Keyed	15'0" (120" Highlift)
6375-164S	Heavy Commercial, 1" Keyed	19'0" (164" Highlift)
6375-164S-125	Heavy Commercial, 1-1/4" Keyed	19'0" (164" Highlift)

### Vertical Lift- Specialty Coated

Part #	Description	Max. Door Height
850-11SC	Commercial, Keyed	11'1"
1100-18SC	Commercial, Keyed	18'1"
1350-28SC	Heavy Commercial, Keyed,	28'1"

### Vertical Lift- Standard Die Cast Aluminum

Part #	Description	Max. Door Height
850-11S	Commercial, 1" Keyed	11'1"
1100-18S	Commercial, 1" Keyed	18'1"
1350-28S	Heavy Commercial, 1" Keyed	28'1"

### 1/4" Keystock

Part #	Description
SSK-3	3" x 1/4" Stainless Steel Keystock
ZCK-3	3" x 1/4" Galvanized Keystock

## Specialty Coated Products

*Better performance. Reduced maintenance. Choosing specialty coated parts for tough, wet and/or corrosive areas is a smart choice. Enhance the life of your door system with our coated drums, couplers and winding cones.*

The special coating enables your counterbalance system of your door to look better and last longer in any wet, corrosive or high visibility area. Use in showroom areas, car, truck and bus washes, industrial plants, agricultural facilities, food processing, fertilizer plants and other areas that require extra protection.



### Features

- Excellent Corrosion Resistance- chemicals, Moisture, more...
- Bimetallic Corrosion Protection
- 1000 hr. Salt Spray Performance (min. per ASTM-B117)
- Thin Film Coating Maintains Product Dimensions
- Abrasion Resistant
- No Hydrogen Embrittlement
- FDA Approval
- High/Low Temperature Range
- Chrome Free



Made In U.S.A.



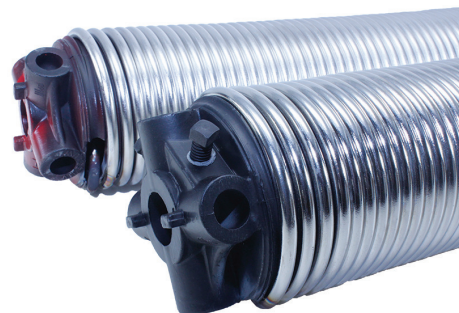
# DOOR HARDWARE

## Corrosion Resistant Torsion Springs

### Need Protection From Rust And Corrosion?

Choose our hot-dipped galvanized wire for standard corrosion protection or upgrade to our totally rust-resistant 302 series stainless steel wire.

These high-quality torsion springs help maintain a cleaner appearance and reduce the “drip down” look that comes from repeated exposure to moisture. Corrosion resistant wire lasts longer in wet or corrosive environments.



### Stainless Steel Torsion Springs

Rust-resistant 302 series stainless steel wire.



Part #	Description
SPS	Stainless Steel Torsion Springs

### Galvanized Torsion Springs

High quality corrosion-resistant galvanized steel wire.

Part #	Description
SPG	Galvanized Torsion Springs

### Spring Wire Chart

Common Diameters	Common Wire Sizes	
1-3/4"	.207	.295
2"	.2187	.306
2-1/4"	.225	.3125
2-5/8"	.234	.331
3"	.2437	.3437
3-3/8"	.250	.3625
3-3/4"	.2625	.375
5-1/4"	.273	.4062
5-7/8"	.283	
6"		

### Winding Cones & Spring Assembly



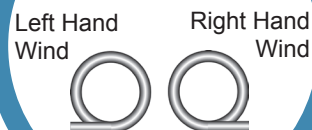
Part #	Description
C200(L or R)	2" I.D Winding Cone (L or R) Hand Wind
C258(L or R)	2-5/8" I.D Winding Cone (L or R) Hand Wind
C334(L or R)	3-3/4" Winding Cone (L or R) Hand Wind
C600 (L or R)	6" Winding Cone (L or R) Hand Wind
C600114 (L or R)	6" Winding Cone (L or R) Hand Wind- 1-1/4" Shaft
C200(L or R)C	2" I.D Winding Cone (L or R) Wind, Specialty Coated
C258(L or R)C	2-5/8" I.D Winding Cone (L or R) Wind, Specialty Coated
C334(L or R)C	3-3/4" Winding Cone (L or R) Wind, Specialty Coated
C600(L or R)C	6" Winding Cone (L or R) Hand Wind, Specialty Coated
C600C(L or R)114	6" Winding Cone (L or R) Hand Wind- 1-1/4" Shaft

**Measure Twice- All springs are Non-Returnable**

### Warning:

Torsion springs are under extreme pressure and should only be handled by experienced personnel who have been trained in the proper procedures, tools and safety measures. Improper use could result in serious injury or death.

### Winding Chart



Duplex and Triplex springs are also available. Please call for availability of other wire sizes.



# DOOR HARDWARE

## Cable & Cable Assemblies



Cable & Assemblies



Cable Fittings

*Copper fittings are recommended for all stainless steel assemblies*

Garage Door Cable	
Part #	Description
CBS18	1/8", 7 X 19 Stainless Steel Cable
CBS532	5/32", 7 x 19 Stainless Steel Cable
CBS316	3/16", 7 X 19 Stainless Steel Cable
CBS18NR	1/8", 19 x 7 Stainless Steel Cable Non-Rotating

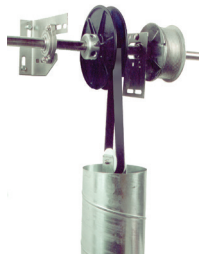
Cable Fitting	
Part #	Description
CO18	1/8" Oval Aluminum Press Sleeve
CR18	1/8" Round Aluminum Press Sleeve
COC18	1/8" Oval Copper Press Sleeve
CRC18	1/8" Round Copper Press Sleeve
CO532	5/32" Oval Aluminum Press Sleeve
COC532	5/32" Oval Copper Press Sleeve
CR532	5/32" Round Aluminum Press Sleeve
CRC532	5/32" Round Copper Press Sleeve
COC316	3/16" Oval Copper Press Sleeve
CRC316	3/16" Round Copper Press Sleeve
CO316	3/16" Oval Aluminum Press Sleeve
CR316	3/16" Round Aluminum Press Sleeve
CHG18	1/8" Thimble
CHG532	5/32" Thimble
CHG316	3/16" Thimble



Made In U.S.A.

Assembled Cables with Thimbles and Sleeves Please Call for Pricing

## Counterweight System Hardware and Kits



Strap Counterweight



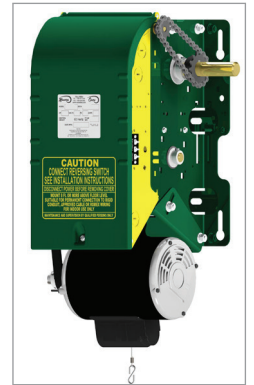
Cable Counterweight

Drums/Spools	
Part #	Description
SWSP	Strap Spool
HC0700 (L or R)	700/750 Right Hand Cable Weight Drum
HC0808 (L or R)	Cable Counter Weight Drum, 8", 808, 500# max
HC01008 (L or R)	Cable Counter Weight Drum, 10", 1008, 500# max
HC01210 (L or R)	Cable Counter Weight Drum, 12", 1210, 500# max
HC01410 (L or R)	Cable Counter Weight Drum, 14", 1410, 600# max

Drums/Spools	
Part #	Description
SWS08	Counterweight Strap, 8' Door- 95"
SWS09	Counterweight Strap, 9' Door- 106"
SWS10	Counterweight Strap, 10' Door- 117"
SWS12	Counterweight Strap, 12' Door- 128"

**Other strap and counterweight systems available.  
Please call for pricing and availability**

# GARAGE DOOR OPENERS & CONTROLS



**AIR-POWERED  
ELECTRIC DC  
ELECTRIC WASH BAY  
CONTROL STATIONS  
REPAIR PARTS  
ACCESSORIES**



**Specialized and standard operators and controls**



800-233-1487 ★ Fax: (218) 751-6551 ★ [Carwashdoors.com](http://Carwashdoors.com)



# GARAGE DOOR OPENERS & CONTROLS



Air-Powered Overhead Door Operators



**Supralift II**

A perfect match for any wet, corrosive and/or high-use application.

## **Complete Corrosion Resistance**

All aluminum cylinder, piston and end cap design, coupled with the most corrosion resistant materials available, provides maximum life in the world's toughest applications.

## **Reliable Performance**

Engineered for continual use in harsh environments. Supralift II™ provides your door with dependable, trouble-free operation cycle after cycle.

## **Fast**

Supralift II™ cycles door 3 times faster than electric openers decreasing cycle time and energy costs. Opener accelerates and decelerates at the beginning and end of each cycle providing smooth operation of your door.

## **Long Life**

Supralift II™ operators are designed and rated for millions of cycles ensuring years of reliable operation in high use areas.

## **Low Maintenance**

Enhanced design minimizes routine maintenance and periodic service, resulting in lower annual repair and service costs for you.

## **Safe**

Safety options also include photoeyes, loop detector and bottom edges for safety reverse.



Made In U.S.A.

**50%**  
**MORE POWER**  
**Than other**  
**Air-Powered Openers**

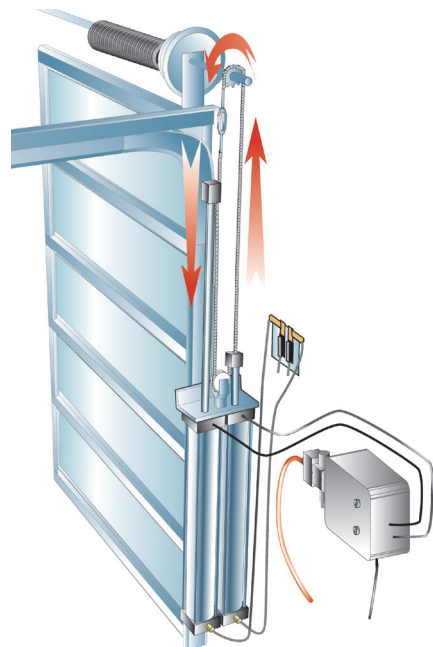
## **Quality Design... Outstanding Performance**

- Lubrication Free Piston Cylinders
- Stainless Steel Mounting Brackets
- Quick Connect Push Fittings
- Posi-Lock Chain Collar
- Aluminum Turnbuckle
- Stainless Steel Sprocket
- Flow Control Kit

# GARAGE DOOR OPENERS & CONTROLS

## How Supralift II™ Works

Supralift II™ Air-Powered operators utilize a dual cylinder/piston assembly mounted to the door track. The air valve and regulator located between your compressor and operator directs air to either the open or the close cylinder which pushes the piston/rod assembly down. The drive chain is attached to the top of each piston rod and loops over the sprocket on the doors' torsion shaft. On the "open" signal, compressed air drives the "open" piston/rod downward. The chain rotates the sprocket, rotating the torsion shaft. The door responds with a smooth, fast motion to the open position. On the "down" signal the door closes with a cushiony stop, preventing cable spooling and unwanted door jerking.



### Supralift II Air-Powered Operators

Part #	Description
SL2-08	8' High Door Operator
SL2-10	10' High Door Operator
SL2-12	12' High Door Operator
SL2-14	14' High Door Operator
SLDO	Dual Operators (For Large or Heavy Doors)

All operators are listed for the height of the door they are designed to open and include; waterproof chain, chain turnbuckle, shaft sprocket and stainless steel mounting hardware.

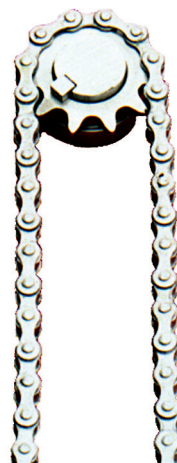
The unit is ready for installation to your door system. 3/8" polyflow airline is not included. (See installation kits under options) You must order your controls and buttons separately from the air-operators control boxes section.

Designed for maximum performance in wet, use environments, the Supralift II™ uses existing air supply (40-90 p.s.i.) for fast, reliable operation of your door system.

### Supralift II Chain Upgrades

Upgrades replace standard supplied waterproof chain to stainless steel.

Part #	Description
SLWP08	Stainless Chain Upgrade, 8' High
SLWP10	Stainless Chain Upgrade, 10' High
SLWP12	Stainless Chain Upgrade, 12' High
SLWP14	Stainless Chain Upgrade, 14' High



### Flow Control Kits- Now Standard!!!!

Eliminates cable spooling common when a door reverses direction when in motion. Provides smoother operation and easier adjustment. Installed away from the cold doorway & undercarriage spray. Minimizes moisture intake problems and freeze-ups.

# GARAGE DOOR OPENERS & CONTROLS



Air-Powered Overhead Door Operators



Made In U.S.A.



- Direct Drive
- Fast, Safe Operation
- Magnetically Coupled
- Field Serviceable
- Smooth Reliable Operation
- Horizontal or Vertical Mount
- Low Maintenance
- Extended Life
- Easy To Install



*Completely*  
**FIELD SERVICEABLE**



## Industry Exclusive!!!

New field serviceable design ensures the ability to replace seals and other repair components in the field. No sending the unit to the factory for repair or service!

### Applications

Car/Truck Washes - Fast Lube Stations  
Auto Dealerships - Food Processing  
Many Others

## Designed Specifically for Your Wet, Corrosive and High Use Environment...

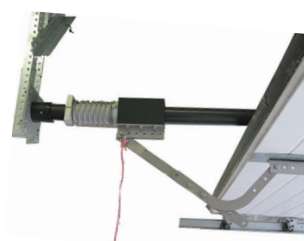
Designed with your toughest environment in mind, NuMax<sup>TM</sup> Air-Powered Door Operators are ideal for any applications where dependability, reliability and durability are absolutely critical for a profitable and trouble-free operation.

Utilizing an innovative compressed air and rare-earth magnetic design, NuMax<sup>TM</sup> Operators feature a heavy duty, rust-resistant, tubular cylinder with no mechanical connection between the piston and the piston slide. This advanced magnetically-coupled design eliminates the need for external seals and fewer wear components, providing less maintenance and leak-proof operation.

For cold weather climates, NuMax<sup>TM</sup> "exhaust only" configuration ensures less probability of moisture intake and freeze-ups giving you the confidence of reliability in any season.

NuMax<sup>TM</sup> Operators conveniently connect directly to your door virtually eliminating costly down-time due to cable jumping common with jackshaft style openers.

Versatile enough to meet your particular door systems needs, NuMax<sup>TM</sup> can be installed horizontally or vertically to fit any standard or custom application.



### Stainless Steel Pusher Spring Limit Assembly

Included for soft cushioning.

Allows you to set your  
doors open limit  
**ANYWHERE!**

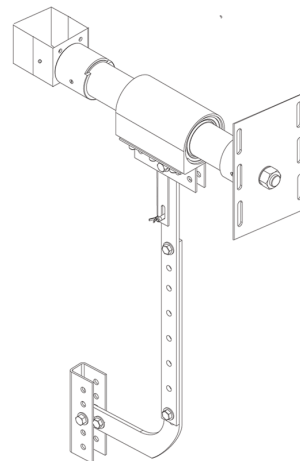


# GARAGE DOOR OPENERS & CONTROLS

## Horizontal Mount NuMax

- Connects Directly to Top Section
- Stainless Steel Arm Assembly
- Best Used with Standard Lift or Highlift Models  
Highlift over 6" will require a dummy section- See door options)

Part #	Description
NMH08	8' NuMax Horizontal Mount
NMH10	10' NuMax Horizontal Mount
NMH12	12' NuMax Horizontal Mount
NMH14	14' NuMax Horizontal Mount
NMH16	16' NuMax Horizontal Mount



## Vertical Mount NuMax

- Connects Directly to Bottom Section
- Stainless Steel Multi-Motion Door Connection
- For Doors with over 36" of Highlift Track

Part #	Description
NMV08	8' NuMax Vertical Mount
NMV10	10' NuMax Vertical Mount
NMV12	12' NuMax Vertical Mount
NMV14	14' NuMax Vertical Mount
NMV16	16' NuMax Vertical Mount

**Note:** All operators are listed for the height of the door. The unit is ready for installation to your door system. 3/8" polyflow airline is not included. You must order your controls and push buttons separately from the Control Boxes Section. Doors with drawbar operators require and center stile and strut for top section.

### All The Features You Need...

- True 2" Diameter Bore Size- 2-1/4" O.D
- 1/8" Cylinder Wall Thickness
- Aluminum Cylinder Wall Anodized to 68 RC
- Adjustable 3" Internal Cushions
- Aluminum Trolley Slide
- Exhaust Only Design- No Moisture Intake
- Stainless Steel Hardware
- Stainless Steel Arm Assembly
- Cushioning Spring Assembly
- 3/8" NPT Porting
- Quick Dump Exhaust
- Field Repairable
- 36 Month Warranty

**NuMax and Supralift II Openers are versatile enough to meet any of your controlling needs.**

**We offer a full range of control functions to meet your requirements.**

**Choose from Single Standard Control Boxes to Multi-Door and Multi-Function Boxes.**



State-of-the-art; NEMA-4X Watertight Control box allows convenient operation with a variety of signalling options including: photoeyes, loops, timers, as well as other devices. High quality valve, filter, regulator, OSHA cut-off valve and double-sealed push buttons included. Emergency open button (shown) or thermostat optional.

**Easily integrated with  
Car Wash and other equipment.**



Supralift II™ is controlled easily with push buttons, radio controls, remote buttons, photoeyes, loops, contact switches, relays, proximity switches and many other devices.

Select our Multi-Door Control Boxes to save time, space and money. Multi-Door Control Boxes allow for a large variety of accessories and functions. Consult the factory for the one that best suits your needs. Available with 4, 6, and 8 door capability.



All control boxes provide ample room for easy wiring and the addition of more accessories. Double terminal strip allow for easy termination of your control devices, accessories and equipment. Easy plug-in primary power source eliminates hard wiring.



**800-233-1487 ★ Fax: (218) 751-6551 ★ Carwashdoors.com**

# GARAGE DOOR OPENERS & CONTROLS

## Air-Operator Control Boxes

All air-powered openers require a control box with a valve and filter regulator. These control boxes are designed for use with Supralift IITM and Numax™ Air-Powered Operators. All include a filter regulator and fittings for a 3/8" polyflow line installation. Our control boxes allow for a variety of control accessories including push button stations, timers, photoeyes, loop detectors, proximity switches and other devices.

Plug in power source requires no hard-wiring. All push buttons are double-sealed and waterproof.

Easy to use double terminal strip makes wiring of accessories a breeze!



Made In U.S.A.



SLA20-24

Easily integrates with carwash equipment

### Standard Emergency Air-Opener Control Box

#### Filter/Regulator

##### Filtering System

Features improved contaminant filter for maximum life and reduced maintenance of the entire system.

##### Regulator

Integrated adjustable regulator allows for easy adjustment of primary air flow into system.

##### Shut-off Valve

Allows quick shut down at valve box, Relieves downstream air pressure for installation or service of the operator- Also used for manual operation of door system.

#### Valve

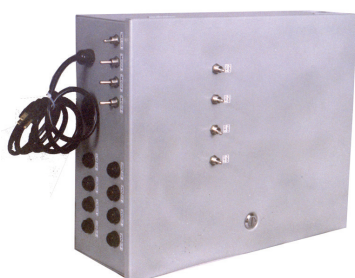
##### High Quality Valve

High quality valve provides long life and minimal maintenance. Valve requires no lubrication eliminating expensive oiler and exposure to oil attracted contaminants. Z-Type O-ring allows for even wear on all surfaces increasing service life and less maintenance.

- NEMA-4X Enclosure
- 2 Position Automatic Valve
- Lifetime Warranty on Coils
- Open, Close and Stop Pushbuttons
- 24 Volt Control Circuit
- Regulator with Gauge and Drain
- Manual Shut-Off Valve
- Emergency Open Push Button Valve for operation of opener upon power failure.

Part #	Description
SLA20-24	Emergency Open Waterproof Control Box 24v. Control Circuit, 115v Power Source (with 2 position up-down buttons mounted in box)

Other Control Boxes Available with:  
Thermostats, Timers, Counters, Relays  
Please call us for pricing and availability.



Optional Multi-Door Box

### Multi-Valve/Control Boxes

For installations that have multiple installations of our Supralift™ or Numax™ Air-Powered Operators. Our multi-valve box will save you time, space and money. Order the multi-valve box for 4, 6 or 8 openers.

Other sizes available upon request.

All air-powered openers require a control box with a valve and filter regulator. These control boxes are designed for use with Supralift IITM and Numax™ Air-Powered Operators. All include a filter regulator and fittings for a 3/8" polyflow line installation.

# GARAGE DOOR OPENERS & CONTROLS

## Air-Powered Operator Options

### Inline Dryers

Removes 99.9% condensation and moisture from airlines increasing cylinder and seal life. Highly recommended to help prevent freeze-ups.

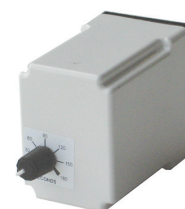
Part #	Description
ILD10-14	Inline Dryer (1 Door) 1/4" NPT, 25 SCFM
ILD20-38	Inline Dryer (2 Door) 3/8" NPT, 50 SCFM
ILD-BKT	Bracket, Inline Dryer



Inline Dryer

### Timers/Thermostats

Part #	Description
UPG-MTIMER	Add to Controls Boxes for Built-in Timer. 11 pin socket factory installed.
TIMER-M	Timer, Adjustable, Macromatic with Base, 1.8 - 180 seconds- Field Install
TIMSS110	Timer, One Shot, .05-5, 24V., 120 V.
TIMSS24	Timer, One Shot, .05-5, 24V., 24 V.
SLTC24	Thermostat, Air-Opener, Control Box, 24 V



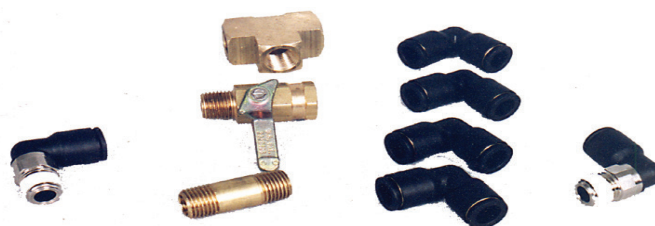
Macromatic Timer

### Airline

Part #	Description
POLY38-100	Polyflow Airline, 3/8", 100' Roll

## Air-Powered Operator Fittings

Part #	Description
SLPFT-14X14	Fitting, -T-, 1/4" x 1/4", Female
SLPFT-532X532	Fitting, -T-, 5/32" x 5/32", Female
SLSF-14x14	Street Elbow, 1/4" Male x 1/4" Female
SLRF-1514	Nipple, 1-1/2" x 1/4" NPT
SLRF-2514	Nipple, 2-1/2" x 1/4" NPT
SLRF-1538	Nipple, 1-1/2" x 3/8" NPT
SLRF-2538	Nipple, 2-1/2" x 3/8" NPT
SLPF90-14X14	Push-in Fitting, 90 Degree, 1/4" x 1/4", NPT
SLPF90-38X14	Push-in Fitting, 90 Degree, 3/8" x 1/4", NPT
SLPF90-38X38	Push-in Fitting, 90 Degree, 3/8" x 3/8", NPT
SLPF90-4X532	Push-in Fitting, 90 Degree, 4mm x 5/32", NPT
SLPF-12X14	Push-in Fitting, 1/2" x 1/4", NPT
SLPF-18X18	Push-in Fitting, 1/8" x 1/8", NPT
SLPF-38X14	Push-in Fitting, 3/8" x 1/4", NPT



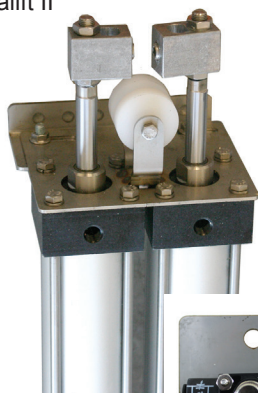
Part #	Description
SLPF-38X38	Push-in Fitting, 3/8" x 3/8", NPT
SLPF-4X532	Push-in Fitting, 4mm x 5/32", NPT
SLPF-532X18	Push-in Fitting, 5/32" x 1/8", NPT
SLPF-532X532	Push-in Fitting, 5/32" Union
SLPFU-38X38	Push-in Fitting, Union, 3/8" x 3/8"
SLPFU90-38X38	Push-in Fitting, 90 Degree, Union, 3/8" x 3/8"
SLVM	Valve, Manual 1/4" Female, 1/4" Male NPT



# GARAGE DOOR OPENERS & CONTROLS

## Supralift Repair Parts

Supralift II



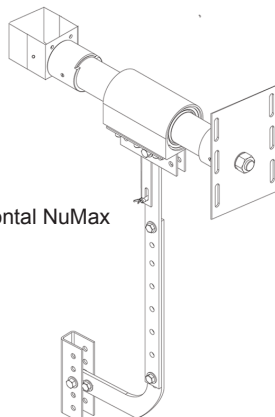
Flow Control Kit



Part #	Description
SLSK-NG	Seal Kit Only, Top Cap, for S.S Style Bushing, per cyl. (SWK-15)
SLSK-P	Seal Kit Only, Top Cap, for Bronze Style Bushing, Parker, per cyl
SLPS-NO	Seal, Piston Seal Kit, w/ Wear Sleeve- Norgren (per cyl)
SLPS-P	Seal, Piston Seal Kit, w/ Wear Sleeve-Parker (per cyl)
SLBUSH-N	Stainless Steel Bushing w/ Seals - Norgren
SLBUSH-P	Bronze Bushing w/ Seals - Parker
SLPA	Pulley, Idler for Supralift, Assembled
41B12SS	Sprocket, Stainless Steel , 12 Tooth, #41, 1" Bore (New Style)
SLACA	Collar, Aluminum, Supralift, Assembled w/ Set Screw and SS Nuts
SLJNUT	Nut, Jambnut, SS, Piston Rod, 7/16"-20, 11/16" AF
SLCKWP-08	Chain Kit, 8' Supralift, Waterproof, #41, 9' w/M.L's
SLCKWP-10	Chain Kit, 10' Supralift, Waterproof, #41, 11' w/M.L's
SLCKSS-08	Chain Kit, 8' Supralift, Stainless Steel, #41, 9' w/M.L's
SLCKSS-10	Chain Kit, 10' Supralift, Stainless Steel #41, 11' w/M.L's
SLTB2	Bracket, SS, Supralift, Top Plate w/Idler brackets
SLTBA	Turnbuckle Assembled w/studs
SLFLKIT-4	Flow Control Kit, Supralift, Plate & Controls Only, (New 11/2013)

## NuMax Repair Parts

Horizontal NuMax



Part #	Description
QDEV-A	Quick Dump Exhaust Valve Assembly
NM1750-9080	Complete NuMax Repair Kit for Piston & Carrier, Seals and Bearings
SUPER-LUBE14	Super-Lube, Synthetic Grease, 14 oz. Cartridge
SUPER-LUBE-A11	Super-Lube, Synthetic Grease, Aerosol, 11 oz.
MAGNALUBE-1C	MagnaLube, Synthetic Grease, 1 pound Can
NM1200-1030	NuMax, Retaining Ring for End Cap (1)
NM1200-1125	NuMax, O-Ring Seal for End Cap
NM1750-1027	NuMax, SS Nut for End Cap, 3/4"-10
NM1750-1028	NuMax, Washer for End Cap, 3/4"
DAAS	Drawbar Arm Assembly, SS, Complete

## Control Box Replacement Parts

Regulator & Dial/Valve



Part #	Description
SLV24-EP	Valve, E-Open, Parker (Watts), 24v.
SLV24-P	Valve, Parker (Watts), 24v.
FRC24-P	Coil, Solenoid, 24v., Replacement, Parker (New Style)
FRGL	Gauge, Filter/Regulator, Liquid Filled, 160 psi
FRGP	Gauge, Filter/Regulator, Standard, 160 psi
SLFR-909	Regulator, Filter- Watts, 35 SCFM, w/ Liquid Filled Gauge
SLFR-909-O	Regulator Only, Filter- Watts, 35 SCFM, No Gauge, No Fittings
VV500P-4	Valve, Shut Off, Assembly, Ball Valve
SLPE18	Noise Muffler, Porex, 1/8", NPT, (Control Box)
SLPE38	Noise Muffler, Porex, 3/8", NPT (NuMax Operator)
SLTR	Transformer, 115v-24v

# GARAGE DOOR OPENERS & CONTROLS

Smart, Durable and Reliable

Fully Adjustable to Your Specialty Application

**smartJACK**™

The smartJACK Electric VFD Operator is an excellent choice for just about any high-use and/or wet applications that requires the extra durability, reliability and operational adaptability that other operators in the market just don't offer.

Using a unique combination of the most modern programmable logic control (PLC), high-quality motor and modern gearbox technologies, the smartJACK has all the features you need in a specialty commercial electric door operator.

Fully-adjustable to meet just about any set of operational requirements, smartJACK operators control the door with a soft-start, soft-stop and allows for complete field adjustment of the acceleration/deceleration speeds, ranges and starting points. Speeds and positioning outside of the soft-start/soft-stop feature are also completely adjustable.

The smartJACK monitors the door position and speed allowing the system to know exactly where the door is in relation to where it was originally programmed. This monitoring is not only used in smartJACK's ability to be fine-tuned for travel and speed. It is also used in smartJACK's built-in safety mechanism that helps in detecting obstructions, door damage or poor door operation.

**An excellent choice for any demanding door project!**



Motor/Jackshaft Assembly



Motor Control Panel



Controller

## SmartJACK Garage Door Operators

Part #	Description
DCSL1000-N4	Smart Lift DC Operator- NEMA-4X Control Box
DCSL1000-N1	Smart Lift DC Operator- NEMA-1 Control Box

## SmartJACK Operator Options

Part #	Description
DCSLO-X325	NON-UL325 Compliance- (Canadian Customers Only)
DCSLO-DIN	Inputs & outputs wired to din rail (requires battery backup)
DCSLO-LP	Door open upon loss of power
DCSLO-DS	Disconnect switch (AC battery backup) (NEMA-1 or -4X)
DCSLO-CORLINE	Motor wiring harness over 10', per ft.
DCSLO-ACH	Axial chain-hoist with floor disconnect for door operation upon power failure
DCSLO-FEAB	Failsafe electro-mechan. brake (axial) with man. disengage
DCSLO-RCHB	Right angle chain-hoist with electro-mechan. brake combin.
DCSLO-BB	Battery back-up
DCSLO-OB	Opto-Block

SmartJACK operators include NEMA-4X UL listed and UL approved fully monitored, non-contact, infrared photo sensors to meet UL 325 safety requirements. When an obstruction is detected upon closing, the photo sensors signal the operator to open the door to it's full open position. Designed for rough applications the flexible design makes photo sensors resistant to impacts and mechanical shocks.



### Features

- Soft-Start, Soft-Stop
- Door Collision Detection
- High Speed Door Operation
- Password Accessible
- Auto Close Timer
- Easy Flexible Programming For Any Door Application.
- Choice of Primary Power- 120/230VAC (1Ø) or 230/460 VAC (3Ø)
- Durable and Reliable TEFC Motor
- Sealed Worm Gear Box- (Hazardous Location Rated)

### Features

- NEMA-4 Gearhead brushless DC servo motor
- 10' Motor Wire Harness
- 16" x 14" x 8" NEMA-4X or NEMA-1 16" x 16" Control Panel
- Adaptive Motor Control
- Adjustable Obstruction Sensing
- Cycle Counter
- 24VAC/DC @1A controller for accessories
- NEMA-4X, Three Buttons On Outside Of Panel, Open, Close & Stop
- Dynamic Electronic Brake
- 40 Day Position Tracking
- 3 to 1 Ratio Motor and Door Sprockets
- 6'-#50 Waterproof Chain & Masterlink
- UL325 compliant NEMA-4X Fraba OPTOEYE monitored photoeyes



# GARAGE DOOR OPENERS & CONTROLS

## Standard Electric Jackshaft Operators

Our electric jackshaft operators are a great fit on just about any standard, highlift or vertical lift sectional door.

For wet conditions choose our wash bay operator models which include extra features that work well in most high moisture conditions.

The operator can be wall, hood, or shelf mounted on either side of the door. It also incorporates a floor level disconnect mechanism for manual operation.

**25 CYCLES/HOUR 100 CYCLES/DAY**



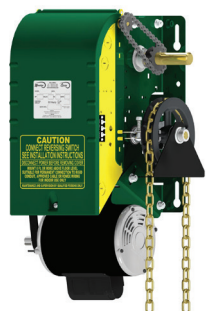
M-OPJW



M-OPHW



M-OPJ



M-OPH

For hoist unit, please specify right or left hand mounting and door height.

### Easy Installation & Maintenance

- Universal mounting
- Easy access to mounting holes
- Accu-cam®: precise and quick limit setting by single hand operation
- Motor removable without affecting the limits
- Control box may be lifted to access reduction sprockets and chain
- Pivoting motor bracket
- Hinged electrical enclosure cover with stable opened position
- Angled terminal strip

### Additional & Protective Features

- Floor level disconnect mechanism for manual push-up operation
- Adjustable friction clutch
- Full overload protection
- Unique fuse control circuit protection

### Choose From Three Control Options:

LM= UL325 Monitored photoeyes  
LE= Logic Board with Non-Monitored Photoeyes  
0= Electro-mechanical Units

## Wash Bay Electric Operators

Part #	Type	Hp.	Rating
M-OPJW-50-XX-X	Jackshaft	1/2	NEMA-4
M-OPHW-50-XX-X	Hoist	1/2	NEMA-4
M-OPJW-75-XX-X	Jackshaft	3/4	NEMA-4
M-OPHW-75-XX-X	Hoist	3/4	NEMA-4

## Standard Duty Electric Operators- For Dry Environments

Part #	Type	Hp.	Rating
M-OPJ-50-XX-X	Jackshaft	1/2	NEMA-1
M-OPH-50-XX-X	Hoist	1/2	NEMA-1
M-OPJ-75-XX-X	Jackshaft	3/4	NEMA-1
M-OPH-75-XX-X	Hoist	3/4	NEMA-1

### Standard Features

- 60 Hz. high starting torque, continuous-duty, single phase capacitor start or 3 phase motor, open drip proof.
- 5L/B V-belt, chain and sprocket reduction
- #50 roller chain and sprocket on final drive
- 1" output shaft with 1/4" keyway
- Operator sprocket: 50B12
- Output shaft speed: 41 rpm
- Mechanical brake
- Control box and limit shaft supported by frame
- Ball bearings at all critical points
- Precision ball bearings on input shaft
- Linear-driven limit switch system
- Baked-on long lasting enamel finish (frame, control enclosure), polymer control box cover
- Shafts protected by yellow chromate coating
- 2 Year Warranty

### Wash Bay Operator Additional Features

- TEFC motor (totally enclosed fan-cooled)
- Seal-tight conduit & connectors
- NEMA-4/12 Open, close and stop pushbutton station
- NEMA-4/12 Control box
- NEMA-4X Photoeyes

### How to Create the Correct Part Number

1. (-XX) Choose Your Voltage Designation.  
11= 120VAC 1Ø  
21= 240VAC 1Ø  
23= 208VAC 3Ø- Add \$ 78.00 to List Price
2. (-X)- Choose Your Desired Control System.  
LM= \*UL325 Monitored Photoeyes  
LE= \*Logic Board with Non-monitored Photoeyes  
0= Electro-mechanical Units- Deduct \$ 70.00 for Mechanical Contacts- (Photoeyes not included on contactor units)

# GARAGE DOOR OPENERS & CONTROLS

## Operator Controls/Accessories Control Stations



3BXT



PBS3



PBK2



1KX

American Garage Door Supply offers a wide variety of controls for your next new, retrofit or repair project. Choose from Double sealed and waterproof, NEMA-4X push button controls for those wet and corrosive environments or standard NEMA-1, standard push buttons for those standard condition areas such as shops, mechanical rooms, offices, or other dry areas.

### NEMA-4X Waterproof Controls

Part #	Description
PBK1	One Button Control, NEMA-4X
PBK2	Two Button Control, NEMA-4X
PBK3	Three Button Control, NEMA-4X
1BXT	One Button Control, NEMA-4X
2BXT	Two Button Control, NEMA-4X
3BXT	Three Button Control, NEMA-4X

### NEMA-1 Standard Duty Controls

Part #	Description
PBS1	One Button Control, NEMA-1
PBS2	Two Button Control, NEMA-1
PBS3	Three Button Control, NEMA-1

### NEMA-4 Keyswitch

Part #	Description
1KX	Key Switch (Ext. Surface Mt), NEMA-4

## Safety Photoeye Sensors



Banner Photoeyes

Choose from two extremely reliable submersible photoeye systems to detect vehicles, people and other obstructions in the doors pathway.

Designed for high moisture and dirty areas, these photoeyes have a proven track record of being highly durable and reliable in direct spray, fog, dirt and other nasty elements.



Telco Photoeyes

### Banner Photoeyes

Part #	Description
SMA30SDC	Banner, Photo Eye Set 30-ft Leads, DC
SMA30SAC	Banner, Photo Eye Set 30-ft Leads, AC
SM30PRL-W/30	Banner Photo Eye Receiver DC 30-ft Leads
SM2A30PRL-W/30	Banner Photo Eye Receiver, AC, 30-ft Leads
SMA30PEL-W/30	Banner Photo Eye Emitter, 30-ft Leads

### Telco Photoeyes

Part #	Description
TELSET24	Telco Photo Eye Set - 24V (w/PA10BKT Adjustable Brackets)
TELSET115	Telco Photo Eye Set - 115V (w/PA10BKT Adjustable Brackets)
TEL24A	Telco Photo Eye Amplifier, 24v. (PA11B302T)
TEL24R	Telco Photo Eye Receiver (LR110LTB3815)
TEL24T	Telco Photo Eye Emitter (LT100HLTB3815)
PA10BKT	Adjustable Photoeye Bracket Set, Stainless Steel (for Telco Eyes)





# GARAGE DOOR OPENERS & CONTROLS



Loop Detector &  
Pre-formed Loop



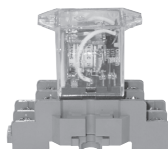
Falcon Motion Detector



Pneumatic Reversing  
Edges



One Shot Timer



Ice Cube Relay



Magnetic Contact Switch

## Loop Detectors/Preformed Loops

Providing positive vehicle detection, our loops are guaranteed to cost less and deliver more than any other loop system in the market. Forget the hassle of making the loops yourself.

Requires no guesswork when it comes to wiring our preformed loops into your detector.

Part #	Description
NP2-24VAC-DC	Northstar Detector, 24v. AC/DC w/ Harness
NP2-120VAC	Northstar Detector, 120v. AC w/ Harness
XNL1018/50	Preformed Loop, Sawcut, 18 ga. XLP, 4-ft x 6-ft, 50-ft Lead
XNL1218/50	Preformed Loop, Sawcut, 18 ga. XLP, 4-ft x 8-ft, 50-ft Lead
XNL1418/50	Preformed Loop, Sawcut, 18 ga. XLP, 4-ft x 10-ft, 50-ft Lead
ENL1018/50	Preformed Loop, Pave-Over, 18 ga., 4-ft x 6-ft, 50-ft Lead
ENL1218/50	Preformed Loop, Pave-Over, 18 ga., 4-ft x 8-ft, 50-ft Lead

## Motion Detectors

Part #	Description
10FALCON	High Mounting Motion Detector (11'5" to 24' Mounting Height- Remote Controlled)
10FALCONXL	Low Mounting Motion Detector (6'5" to 11'5" Mounting Height- Remote Controlled)
10REMOTE	Remote Control for Falcon Motion Detector

## Pneumatic Edges/Accessories

Part #	Description
PRKIT3	Pneumatic Edge Kit, 3 Wire, 14-ft
AHG-50	Gummed Rubber Hose, 7/16" x 5/8"
AHP-10	Air Hose Plug
AHT-375	Air Treadle Hose

## Timers/Relays

Part #	Description
24-24-1	Relay, Ice Cube Style, DPDT, 24V.
24-115-1	Relay, Ice Cube Style, DPDT, 110V.
SH2B-05	Relay Base
TIMER-M	Macromatic Timer w/ Base
26-438	Timer - Dual Function, 24v.
26-200	Timer - Adjustable Artisan

## Magnetic Contact Switch

Part #	Description
MCS	Magnetic Contact Switch

# INFRARED RADIANT HEATERS



**SINGLE STAGE  
DUAL STAGE  
STAINLESS STEEL STRAIGHT TUBE  
STAINLESS STEEL U-TUBE  
HEATER ACCESSORIES**



Made In U.S.A.

**Models for high-moisture and standard environments**



**800-233-1487 ★ Fax: (218) 751-6551 ★ Carwashdoors.com**

# INFRARED RADIANT HEATERS



## STAINLESS STEEL

Low Intensity Gas Infra-Red Heaters

## Built For Harsh Wet, Corrosive Conditions

### Energy Saving Infra-red Heat:

#### Here's The Story.

Daystar Heaters create heat with infra-red rays, an energy form similar to the sun's rays warming the earth. The Daystar's highly polished stainless steel reflectors focus infra-red energy that is converted into heat as it reaches absorptive objects such as equipment, concrete floors, machines, and of course, people. The surrounding air is then warmed by conduction and convection. With our 304L stainless steel rust-resistant design, Daystar Infrared Heaters are the perfect choice for any high moisture environment.

#### Options

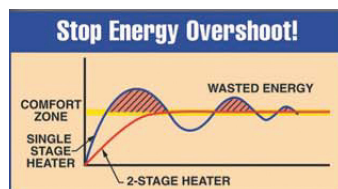
- Side Reflector, 90° Elbows, • "U" Bends, "Y" Couplers
- Inlet and Exhaust Kits, Hangar Kits

Available with 40,000 to 200,000 BTU/Hr inputs and tube lengths from 10 to 70 feet. **Daystar's 2-Stage Heaters Achieve Optimum Energy**

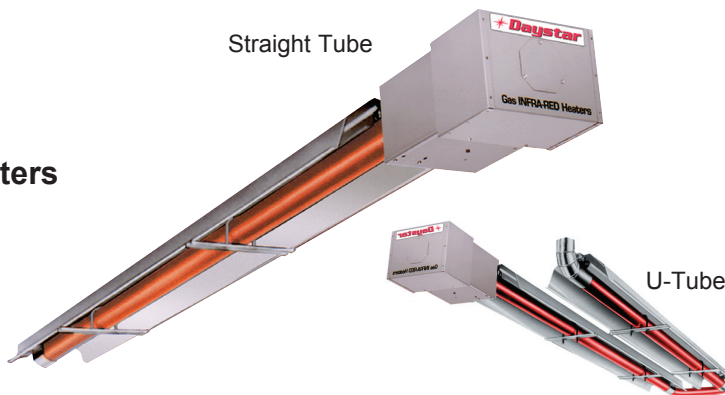
## TRUE DUAL 2-STAGE Heaters

#### Efficiency

Unlike any other systems claiming 2 stage operation, both air and gas flows of the Daystar system provide precise air-to-gas ratios at both the high and low-heat stages for optimum efficiency



Straight Tube



U-Tube

## Saves Up To 75% In Energy Costs

#### Standard Features

- Proven System Design — Over 30 years
- Stainless Steel Combustion Chamber
- Stainless Steel Heat Exchanger
- Stainless Steel Butt-Joined Tubes
- Simple Chain Mounting
- A.G.A. & CGA Design Certified
- Highly Polished Stainless Steel Reflectors: 98% Reflectivity
- 91.6% Reflectional Efficiency (Shape)
- 4 Inch Tube Diameter
- Heavy Duty Stainless Steel 8" Tube Couplings-
- Heavy Duty Fan Motors Enclosed in Sealed Burner Box
- Choice of reflector arrangements from 0° to 30° Each reflector rotates independently
- Burner fully assembled & tested — Ready to Hang
- Safe direct spark ignition with 100% safety shut-off
- Pre-purge cycle for safety
- Factory installed wave turbulator for high efficiency
- Three System validation lights visible from floor
- CSA International design certified to ANSI/CGA standards
- Burner controls fully enclosed and isolated from combustion air

#### TRUE DUAL Special Features

- Heavy Duty 12-gauge heat exchanger
- Optimum combustion 100% of the time

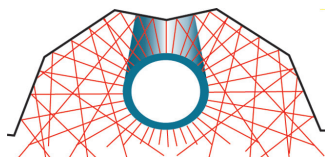
#### Warranty

10 Year Limited warranty on Burner Core and all combustion and heat exchanger tubes.

2 Year Limited warranty on All Burner Controls

#### Superior Reflectional Efficiency of 91.6%

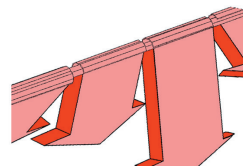
33 of 36 infra red rays are directed to the floor: not back on the tube for high efficiency.



#### Save Up To 75% in Heating Costs

#### and Direct the Heat Where You Want It.

Each 5' or 10' reflector rotates independently from 0° to 45°



# INFRARED RADIANT HEATERS

## 2 Stage - True Dual Stainless Steel Heaters

To order specify like this example: **DHLS-85/65-20N**



Made In U.S.A.

Straight Tubes			LENGTH (Overall Length including the burner)					
D S H L S	BTUH'S 1000	Gas Type	20' (22')	25' (27')	30' (32')	35' (37')	40' (42')	45' (47')
	85/65	N or L						
	100/65	N or L						
	125/95	N						
	125/95	LP						
	150/100	N or L						

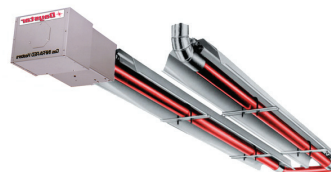
BTUH'S 1000	Gas Type	50' (52')	55' (57')	60' (62')
125/95	N or L			
150/100	N or L			
175/125	N or L			
200/145	N or L			

To order specify like this example: **DHLU-175/195-60N**

U-Tubes			LENGTH (Overall Length including the burner)				
D S H L U	BTUH'S 1000	Gas Type	20' (13')	30' (18')	40' (23')	50' (28')	60' (33')
	85/65	N or L					
	100/65	N or L					
	125/95	N					
	125/95	L					
	150/100	N or L					

Please see page 50  
for accessories

BTUH'S 1000	Gas Type	20' (13')	30' (18')	40' (23')	50' (28')	60' (33')
175/195	N or L					
200/145	N or L					



## Single Stage Stainless Steel Heaters

To order specify like this example: **DTSS-130-30N**

Straight Tubes			LENGTH (Overall Length including the burner)				
D T S S	BTUH'S 1000	Gas Type	10' (12')	20' (22')	30' (32')	40' (42')	50' (52')
	40	N or L					
	40-60	N or L					
	65-85	N or L					
	65-85	N					
	65-85	L					
	100	N					
	100	L					
	105-125	N					
	105-120	L					
	105-130	N					
	130-150	N					
	125-150	L					
	150-200	N or L					

U-Tubes			LENGTH (Overall Length including the burner)				
D T S U	BTUH'S 1000	Gas Type	20' (132')	30' (18')	40' (23)	50' (28')	60' (33)
	40-60	N or L					
	65-85	N or L					
	65-95	N					
	65-95	L					
	100	N					
	100	L					
	105-125	N					
	105-120	L					
	105-130	N					
	130-150	I					
	125-150	N or L					
	150-200	N or L					





# INFRARED RADIANT HEATERS



Made In U.S.A.

5' Increment Heaters &  
Aluminized Reflectors  
also available  
**Please Call for Prices**

## Accessories Price List for Daystar Heaters

### Thermostats

Part #	Description
132026-4	Thermostat, 120 volt, 40-80 degrees, NEMA-1
132486	Thermostat (T115), 120 volt, 40-100 degrees NEMA-4X, Watertight w/ SS Coiled Sensor
0002-42-156	Thermostat, 2 Stage, 24V Microprocessor w/LED
0002-42-177	Thermostat, 2 Stage, Weathertight, Stainless Steel

### Combustion/Inlet Air Supply

Part #	Description
132336	Wall Supply Kit for 1 Heater (4" OD) (includes outside wall box, flexible duct, sheet metal sleeve) sheet metal sleeve)
132337	Roof Supply Kit for 1 heater (4" OD) (includes roof venting cap flexible duct, sheet metal sleeve and vent connector)
132654	Burner/Blower Enclosure (5-way) (Carwash) (for all blowers, price includes factory installation)
132685	90° Elbow, 16 ga, Aluminized Assembly

### Exhaust Venting

Part #	Description
131402	Roof Venting Cap (4" OD)
132149	Roof Venting Cap (5" OD)
132860	Wall Venting Cap (Duravent) - 4"
132861	Wall Venting Cap (Duravent) - 5"
132865	Wall Venting Cap (Duravent) - 6"
132237	Wall Venting Kit (4" OD) (includes locking collar, wall brace and 4" tee vent cap)
132238	Wall Venting Kit ( 5" O.D)
132097	Wall Brace
132104	4" ID Tee with Vent Cap and Bird Screen

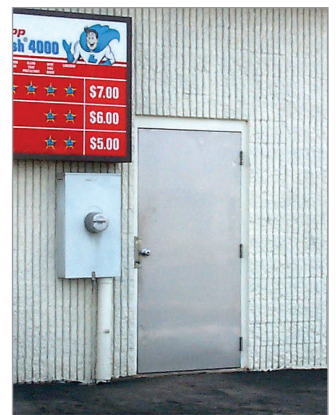
### Elbows & Dual Venting Couplers

Part #	Description
132619	*90° Elbow (16ga Stainless Steel) without Tube Clamp
132620	*Y-Coupler (4" x 4" x 5" 16 ga. Stainless Steel) (for dual venting of all current models)
132687	Y-Coupler, 4" x 4" x 5", 16 ga, Aluminized
132616	*Stainless Steel Tube Clamp
132104	4" ID Tee with Vent Cap and Bird Screen

### Chain Mounting

Part #	Description
CH-50	Chain Set - 50' Chain w/ 14 - #5 S-Hooks
CH-25S	Chain Set - 25' SS Chain w/ 14 - #5 S-hooks

# STAINLESS STEEL ENTRY DOORS



**INSULATED DOORS  
ACCESSORIES  
HARDWARE**



Made In U.S.A.

**Insulated, durable & rust-resistant**

# STAINLESS STEEL ENTRY DOORS

## Insulated Door System



**Low Maintenance**

**Economy with Durability**

**Attractive Seamless Appearance**

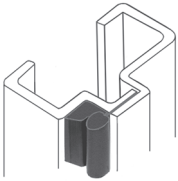
**Excellent Energy Savings**

**Ease of Installation**

### Features

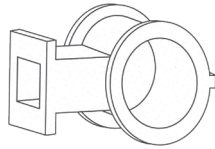
- Full thermal break of jambs, header, threshold and panel
- 16 ga. x 3-1/2" stainless steel jambs
- 1-3/4" - 24 ga. 304 stainless steel door panel
- Foamed-in-place insulation - R-12
- Full perimeter weatherstripping
- Nylon lock insert
- Stainless steel hinges
- Adjustable strike plate
- Standard Sizes - 3'0" x 6'8" and 3'0" x 7'0"

### Other Quality Features



#### Dual Sealing Weatherstrip

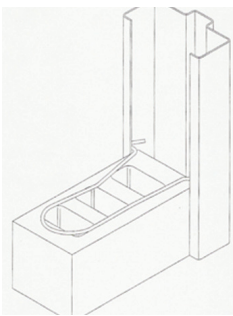
Provides maximum protection from air infiltration in the toughest weather.



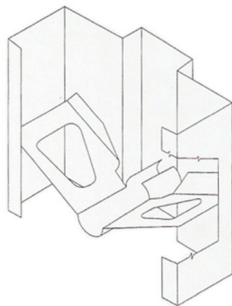
#### Non-Collapsible Nylon Insert

Eliminates lockset loosening  
No wood block to deteriorate or absorb moisture.

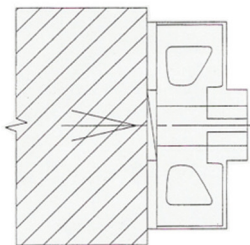
## Choose From A Variety Of Mounting Options



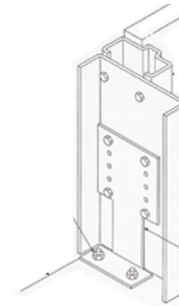
CMU Masonry Anchors



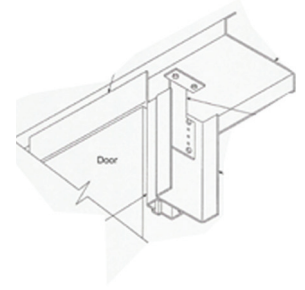
Snap-In



Masonry Anchors



Base Floor Attachment



Header Girt Attachment

# STAINLESS STEEL ENTRY DOORS

Part #	Unit Size	Description
T8-3068SS304	38-5/8" x 81-7/16"	3/0 x 6/8 SS Thermal Door
T8-3070SS304	38-5/8" x 85-7/16"	3/0 x 7/0 SS Thermal Door
T8-4068SS304	49-3/8" x 81-7/16"	4/0 x 6/8 SS Thermal Door
T8-4070SS304	49-3/8" x 85-7/16"	4/0 x 7/0 SS Thermal Door
T8-4080SS304	49-3/8" x 96"	4/0 x 8/0 SS Thermal Door
T8-6068SS304	74-15/16" x 81-7/16"	6/0 x 6/8 SS Thermal Door
T8-6070SS304	74-15/16" x 85-7/16"	6/0 x 7/0 SS Thermal Door
T8-8070SS304	94-7/16" x 85-7/16"	8/0 x 7/0 SS Thermal Door
T8-8080SS304	94-7/8" x 96"	8/0 x 8/0 SS Thermal Door
DR-000001	Other Than Standard	Special Size Adder
DR-400101	5" Wall	SS Sub-frame Extension
DR-400101	8" Wall	SS Sub-frame Extension
DR-400101	10" Wall	SS Sub-frame Extension
DR-400101	12" Wall	SS Sub-frame Extension

**Note:** Rough opening size for door is typically 1/4" larger than unit size per side.  
Sub-frame is intended for Masonry/Block Wall only.

## Accessories

Part #	Description
DRL-200310	Door Closure, Stainless Steel
DRL-100285	Door Closure with #3 Reg. Arm
DRL-100307	Panic Hardware w/Ball Knob, Stainless Steel
DRL-100305	Panic Hardware w/o Knob, Stainless Steel
DRL-200309	Commercial Lock Set, Stainless Steel
DRL-200313	Passage Lockset, Stainless Steel
DRL-200316	Privacy Lockset, Stainless Steel
DRL-200202	Commercial Deadbolt, Stainless Steel
DRL000025	Deadbolt Prep Charge
DRL-200252	Stainless Steel Kickplate, 10" x 34"
DRL-200312	Stainless Steel Pull Plate, 3-1/2" x 15"
DRL-200311	Stainless Steel Push Plate, 8" x 16"
*DRW-1616SS	16" x 16" Stainless Steel Vision Panel
*DRW-2024SS	20" x 24" Stainless Steel Vision Panel
*DRW-2236SS	22" x 36" Stainless Steel 1- Lite Vision Panel
DRW-1212SSW	12" x 12" Stainless Steel Vision Panel, Wire Glass
DRW-1616SSW	16" x 16" Stainless Steel Vision Panel, Wire Glass
**DRW-1616	16" x 16" Window Kit, 1" Insulated Glass, PVC Frame
**DRW-2024	20" x 24" Window Kit, 1" Insulated Glass, PVC Frame
**DRW-2236	20" x 24" Window Kit, 1" Ins. Glass, PVC Frame, 9 L.P
**DRW-1616W	16" x 16" Window Kit, 1" Insulated Glass, PVC Frame
**DRW-2024W	20" x 24" Window Kit, 1" Insulated Glass, PVC Frame
**DRW-2236W	20" x 24" Window Kit, 1" Ins. Glass, PVC Frame, 9 L.P
DRL-300059	Astrigal, Stainless
DR-200191	Masonry Clips for Doors

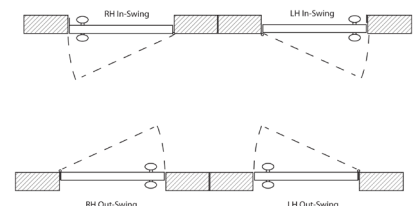
\*Windows are installed at the factory

\*\* Windows are provided as a kit- Not installed at factory



**The Ideal Door  
For Any  
High Moisture Or  
Corrosive Environment!**

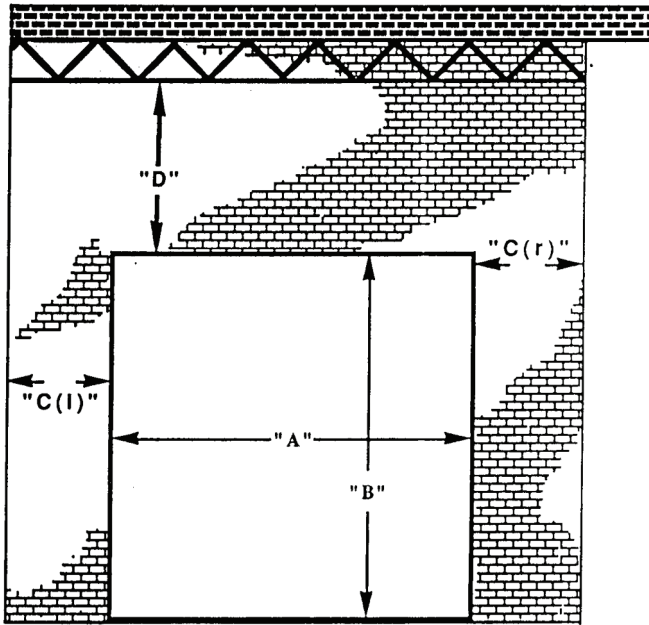
**Please Specify Door Swing  
When Ordering.**



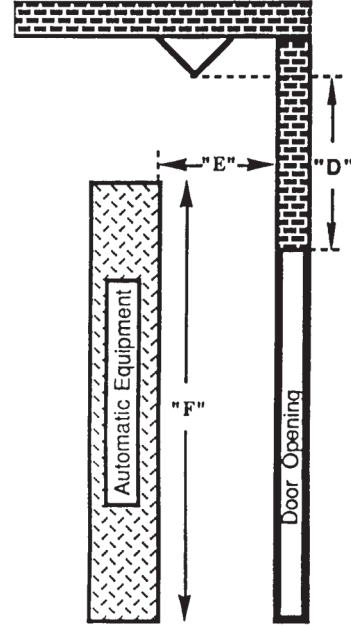


## Door Survey

Please use the survey below to help us ensure that your order is accurate



Inside View



Side View

### Dimensions (Fill in Completely)

A. Finished Opening Width: \_\_\_\_\_

B. Finished Opening Height: \_\_\_\_\_

C (r). Right Sideroom: \_\_\_\_\_

C (l). Left Sideroom: \_\_\_\_\_

D. Headroom: \_\_\_\_\_

Floor to Ceiling Height: \_\_\_\_\_

E. Backroom: \_\_\_\_\_

F. Equipment Height: \_\_\_\_\_

G. Jamb Material: \_\_\_\_\_

Company Name: \_\_\_\_\_

Address: \_\_\_\_\_

City/State/Zip: \_\_\_\_\_

Phone: \_\_\_\_\_

Fax: \_\_\_\_\_

Email: \_\_\_\_\_

Contact: \_\_\_\_\_

### Mechanical Room Applications Only:

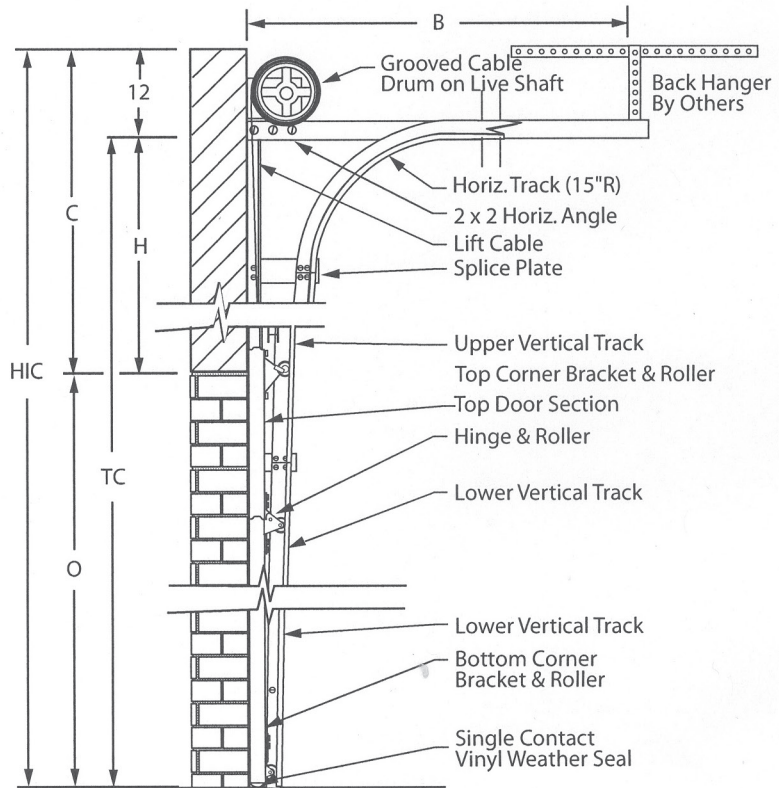
Distance to Mechanical Room Wall: \_\_\_\_\_

# FORMS

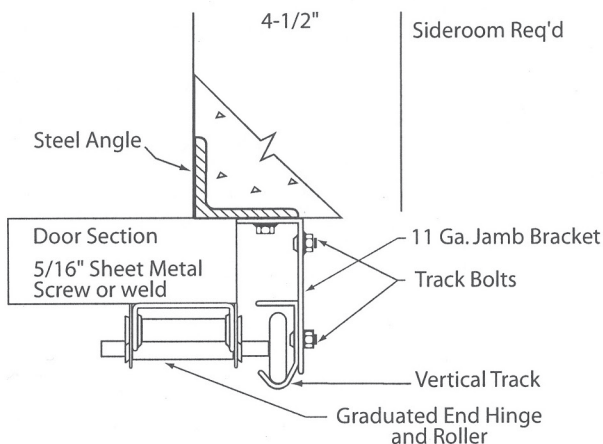


HIC = Height in Clear  
 O = Opening Height  
 C = Headroom Clearance  
 $HIC - O$   
 H = High Lift  
 $H = (C - 12")$   
 B = Backroom  
 $O + 14" - H$   
 TC = Track Clearance  
 $O + H$

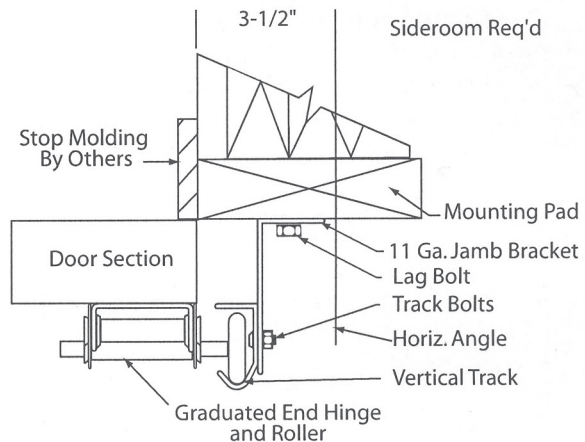
Job Name: \_\_\_\_\_  
 Date: \_\_\_\_\_  
 Dealer: \_\_\_\_\_  
 P.O.: \_\_\_\_\_



## STEEL JAMB DETAIL



## WOOD JAMB DETAIL



Door No.	Qty	Opening Size		Actual Door Size			Sect. Type	Pnls. Wide	Sect. High	HIC	O	C	H	B	TC	Track Type
		Width	Height	Width	Height	Thk										

© Copyright American Garage Door Supply Co. 2001

# TERMS & CONDITIONS

- PRICING:** All prices are F.O.B. Bemidji, MN. Prices are subject to change without notice.
- TERMS:** Cash, accepted credit card, or net 30 with approved credit. Balances over 30 days are subject to a finance charge of 1-½% per month. NSF checks will be charged a \$ 30.00 service fee. No material will be manufactured or shipped to overdue accounts with balances over 15 days from the oldest transaction due date. Orders will be processed only on a pre-pay basis until credit is approved. The processing of all orders is subject to the approval of the credit manager. All products will remain the property of American Garage Door Supply until paid in full. All payments with credit cards will be subject to a 3% processing fee.
- ORDERING:** Written orders are preferred, when possible, to ensure accuracy of order. Please provide all details and specifications when ordering. Customer will assume total responsibility for all errors unless the order is in writing. All special or custom orders require a minimum of a 50% Deposit.
- CHANGE ORDERS, CANCELLATION OF:** All change orders are to be in writing. Non-stock, special door sizes or quantities are not returnable or cancelable. Deposits for custom products are forfeited upon cancellation.
- RETURNED MERCHANDISE:** No materials will be accepted without a return authorization (RMA) from the factory. Custom product is non-returnable. Freight on returned material must be prepaid by customer. A 25% restocking fee will be applied on returned, non-warranty product if accepted after inspection at our dock.
- WARRANTY POLICY:** Call factory with the following information.
- Describe reason for return or symptoms.
  - Provide serial numbers, part numbers, invoice number and other pertinent information.
  - Obtain Return Authorization (RMA) from factory. Returns will not be accepted without an RMA.
  - Replacement Product is shipped and invoiced to responsible ordering party.
  - Customer returns product pre-paid to factory for evaluation.
  - Upon warranty evaluation and approval, an appropriate credit will be issued to the customer.
  - Scratches are not considered a defect.
- SHIPPING DAMAGE:** **It is your responsibility to check all freight for obvious or concealed damages at delivery.** Buyer must immediately make all claims for delay, damage, or loss in transit to American Garage Door Supply Inc. In the case of damaged freight, it is to be accepted as such and the damage is to be noted on the freight bill or bill of lading. Customer must immediately report damages to American Garage Door Supply and provide all appropriate documentation including copies of accepted freight bills with noted damage, images, notes, etc. These will be necessary to support a valid claim. Customer is responsible for the cost of replacement products delivered under any customer freight claim situation.
- SHIPPING ESTIMATES:** Shipping costs are prepaid and added to the invoice. Shipping estimates from qualified carriers are provided as a service to provide the best quality delivery to your destination at the best value. We coordinate these services through our experienced shipping department. Other options to acquire your order are available upon request.
- All shipping estimates are based on a single attempt commercial delivery at a loading dock or otherwise appropriate unloading area unless otherwise specified.
  - Estimates are based on a 15-minute or less driver wait times at time of delivery. Buyer is responsible for extra shipping charges including: demurrage, re-delivery, liftgate requirements or other fee's incurred above the shipping estimate from deliveries outside of normal conditions and those listed above. These are charged by the carrier and beyond our control.
- LABOR/OTHER CHARGES:** Under no circumstances will American Garage Door Supply assume responsibility for labor or other charges unless agreed upon in writing in advance. A storage fee of \$ 250.00 per month will be added to door, operator and large hardware orders not shipped or picked-up after 2 weeks of scheduled ship date.
- SALES TAX RESPONSIBILITY:** Customer is responsible for payment of all applicable state and local taxes, or for providing a valid sales tax exemption certificate. When placing an order, customer shall indicate which products are tax exempt and provide proper documentation as required.



# ★ VISIT US ONLINE ★

**Visit us online 24/7/365 for convenient access to:**

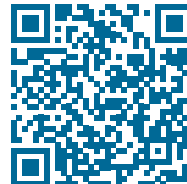
- » **Up-to-date information on our new and existing products**
- » **Product literature, specifications and shop drawings**
- » **Manuals and technical tips**
- » **Order information and easy ordering**

*and much more!*



**[carwashdoors.com](http://carwashdoors.com)**

**Visit our carwash doors site for product information regarding all of our specialty products listed in this catalog.** The site features product and ordering information including a section for easy, convenient downloadable documents including: product literature, specifications, shop drawings, manuals, technical tips, and more.



**[stainlessgaragedoorparts.com](http://stainlessgaragedoorparts.com)**

**Visit our stainless steel parts site** for product information, specifications and easy online ordering of your specialty garage door parts. This site focuses on our stainless steel and specialty garage door hardware and features secure and convenient access to order your new, retrofit or repair hardware for your specialty project anytime of the day.

★ **MADE IN AMERICA** ★



# THRIVING IN THE WORLD'S TOUGHEST ENVIRONMENTS

## WET • CORROSIVE • DIRTY

- » Car Washes
- » Truck, Trailer, Bus & Other Washdown Facilities
- » Waste Treatment Plants
- » Livestock Barns
- » Fertilizer Plants
- » Food Processing Plants
- » Salt/Brine Facilities
- » Dairy Processing
- » Meat Processing Plants
- » Marine Environments
- » Poultry Farms
- » Mining Areas
- » Fish/Seafood Processing
- » Many more...



## DURABLE, RELIABLE & BUILT TO LAST.

 **American**<sup>TM</sup>  
garage door supply inc.

1225 Industrial Park Drive SE  
Bemidji, MN 56601

★ CALL

1-800-233-1487

★ VISIT US ONLINE

[Carwashdoors.com](http://Carwashdoors.com)

★ MEMBERS OF:

 **IDA**  
International Door Association

 **INTERNATIONAL  
CARWASH  
ASSOCIATION**  
SINCE 1988