

*Your single source for*

# STAINLESS STEEL

**GARAGE DOOR PARTS & HARDWARE**



**HINGES • TOP BRACKETS • BOTTOM BRACKETS • ROLLERS • TRACK • LOCKS • BEARING PLATES  
SPRINGS • DRUMS • SHAFT • CABLE • PUSHER SPRINGS • CHAIN • ANGLE IRON**



Scan the **QR Code** or go online to **[stainlessgaragedoorparts.com](http://stainlessgaragedoorparts.com)**



Call **800-233-1487** or go online to **stainlessgaragedoorparts.com**

# Stainless Steel.

## Ready for the Challenge.

Stainless steel garage door hardware is essential for keeping doors in high-moisture and other extreme environments as free from corrosion, rust and contamination as possible. Choosing stainless steel means more days up and running. It also means saving valuable time and money down the road.

For garage door systems to survive and thrive under extreme conditions, stainless steel is the best material for the job and outlasts any other material available in the market. It has a great, long lasting appearance too!

We strongly recommend our stainless steel hardware and other specialty garage door parts for these types of applications or for any other type of wet, corrosive, dirty or hard-working environment.

- Car Washes
- Truck, Trailer, Bus & Other Washdown Facilities
- Waste Treatment
- Livestock Barns
- Fertilizer Plants
- Food & Sugar Processing Plants
- Salt/Brine Facilities
- Vegetable Storage Facilities
- Dairy Processing
- Slaughterhouses
- Meat Processing Plants
- Chemical Plants
- Agricultural Facilities
- Marine Environments
- Poultry Farms
- Cement Yards
- Material Handling Areas
- Coastline Residential Areas
- Mining Areas
- Fish/Seafood Processing
- Cold Storage Applications
- Many more...





# Make a Lasting Impression.

## **Tough. Lasting. Functional.**

Stainless steel & other specialty hardware add longevity to your door systems and improves their day-to-day reliability by reducing the effects that corrosion, rust/oxidation, and contaminants create.

Garage door parts manufactured with tough, durable stainless steel and other specialty materials reduces maintenance, service and the unexpected costs of downtime. Ultimately, this delivers an excellent value over time providing you with the peace of mind that your doors will operate safely and reliably even in the worst applications.

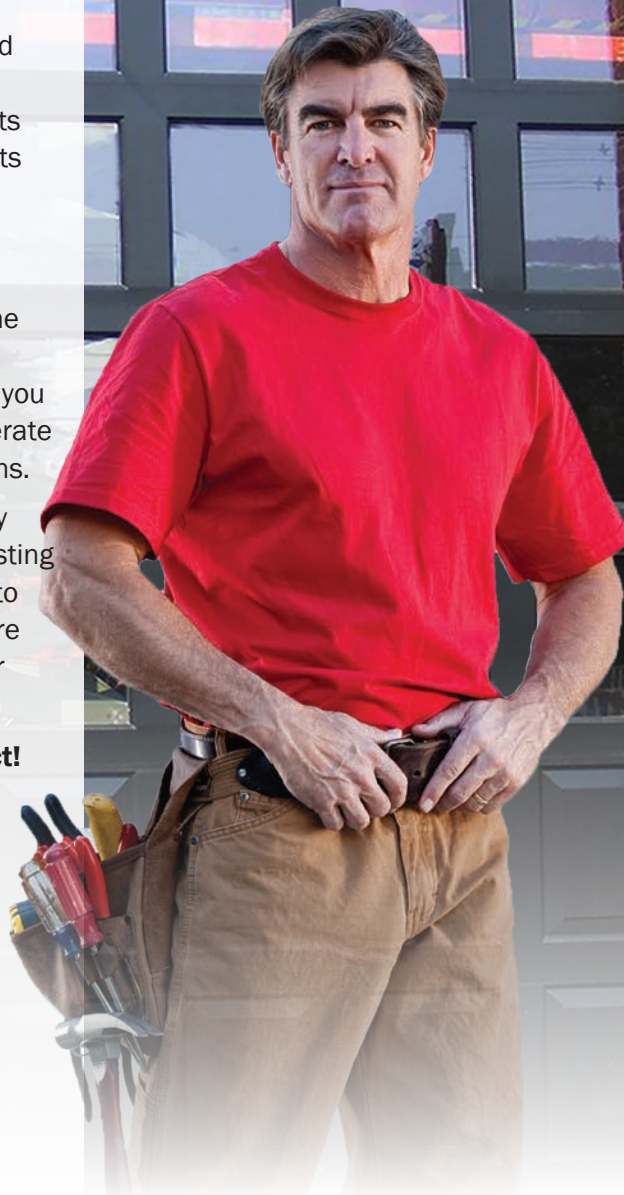
Choose our stainless steel and other specialty parts individually for direct replacement on existing doors or purchase them in a tailored package to equip your favorite door section with a hardware package that creates the best customized door system for your specific needs.

**Great for any new, retrofit or repair project!**

### **Our Stainless Steel Products Include:**

- Track
- Torsion Springs
- Bearing Plates
- Bearings
- Torsion Shafts
- Cable
- Rollers
- Hinges
- Top Fixtures
- Bottom Fixtures
- Locks/Fasteners
- Pusher Springs
- Struts
- Angle Iron

**See the diagram on page 11 for more options**



 **American**<sup>TM</sup>  
garage door supply inc.

**800-233-1487**

**[stainlessgaragedoorparts.com](http://stainlessgaragedoorparts.com)**

Over 30 years. That's how long we've been working with stainless steel and other specialty garage door parts—and successfully helping our customers find exactly what they're looking for at the best possible price.

We are here to supply you with the right replacement parts you need to service and repair your current door or to finish your retrofit project. We can even help you turn your favorite door system into your own specialized door system with corrosion resistant track, springs, counterbalance components, face hardware, rollers and other items.

Simply send us your specifications and we'll build it from the sections up.

Whether you need one specific part or a custom kit, we're fully equipped to provide both the solution and the product directly to you.

**Call us today 1-800-233-1487**

**Let Our Experience Go To Work For You!**

## Magnum<sup>TM</sup> Supreme Rollers

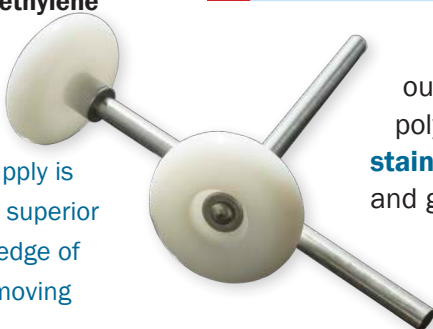
**Bearing:** Double-Sealed Precision Bearing  
**Ball Bearings:** Stainless Steel  
**Raceways:** Stainless Steel  
**Tire:** Ultra High Density Polyethylene  
**Tire Face:** Shielded Inner Face  
**Stem:** 304 Stainless Steel  
**Collar:** 304 Stainless Steel

## Magnum<sup>TM</sup> Original Rollers

**Bearing:** Double-Sealed Precision Bearing  
**Ball Bearings:** High Carbon Chrome Steel  
**Raceways:** High Carbon Chrome Steel  
**Tire:** Ultra High Density Polyethylene  
**Tire Face:** Shielded Inner Face  
**Stem:** 304 Stainless Steel  
**Collar:** 304 Stainless Steel

"The team at American Garage Door Supply is always able to recommend and supply superior products for a great price. Their knowledge of stainless steel is extremely helpful in moving my projects from start to finish."

– Ken B. from Calgary, AB



## Magnum<sup>TM</sup> Original Rollers

Ever since our patented design hit the market, the original Magnum rollers have proved themselves in high-use, dirty, wet, and other applications that require low maintenance, low noise and a higher load and cycle rating.

**An Industry Favorite For Over 3 Decades!**



Heavy Duty	Part Number	Description
	RMS3147	3" Magnum Rollers Short Stem - 4-1/2"
	RMS3197	3" Magnum Rollers Long Stem - 9"
	RMS2147	2" Magnum Rollers Short Stem - 4-1/2"
	RMS2197	2" Magnum Rollers Long Stem - 9"

## Magnum<sup>TM</sup> Supreme Rollers

Because of their stainless steel ball bearings and raceways, the Magnum Supreme Roller (**Magnum SP**) can handle tougher environments while maintaining the benefits and longevity of the original Magnum design.

Heaviest Duty	Part Number	Description
	RMSP3147	3" Supreme Rollers Short Stem - 4-1/2"
	RMSP3197	3" Supreme Rollers Long Stem - 9"
	RMSP2147	2" Rollers Short Stem - 4-1/2"
	RMSP2197	2" Rollers Long Stem - 9"

## Bearingless Rollers

Light Duty	Part Number	Description
	RMSBL3147	3" Bearingless Rollers, Short Stem - 4-1/2"
	RMSBL3197	3" Bearingless Rollers, Long Stem - 9"
	RMSBL2147	2" Bearingless Rollers, Short Stem - 4-1/2"
	RMSBL2197	2" Bearingless Rollers, Long Stem - 9"

Perfect for lightweight doors, our Bearingless Rollers pair well with any polycarbonate door package (**available online at [stainlessgaragedoorparts.com](http://stainlessgaragedoorparts.com)**). Durable, reliable, and great for corrosive environments.

**Roller Kits  
are available  
at a  
discounted Price  
Call Today!**





# Hinges & Face Hardware

Stainless steel provides rust-resistant durability that can last for decades, extend this protection to your hinges and other door section hardware with our standard 304L stainless material. Also available in 316 series stainless.

**Customize  
your favorite  
door with our  
hardware kits.  
Call today!**



Face Hardware Kits

## Stainless Steel Hinges

Gauge	#1	#2	#3	#4	#5	#6	#7	#8	#9	#10	#11	#12
12ga.	HS112	HS212	HS312	HS412	HS512	HS612	HS712	HS812	HS912	HS1012	HS1112	HS1212
14ga.	HS114	HS214	HS314	HS414	HS514	HS614	HS714	HS814	HS914			



Part Number	Gauge	Description
HSO112	12ga.	Cut Down Hinge, Stainless Steel, OHD Style
HSCO112	12ga.	Combination Hinge, Stainless Steel, OHD Style
HSCFV112	12ga.	Full Vision Hinge, Stainless Steel, C-Style
HSCC112	12ga.	Combination Hinge, Stainless Steel, C-Style
HSCH112	12ga.	Full Vision Hinge, Stainless Steel, 7/8" Half Leaf
HSHWD112	12ga.	Full Vision Hinge, Stainless Steel, W-D Style
HSCWD112	12ga.	Combination Hinge, Stainless Steel, W-D Style
HTUS	12ga.	Universal Stainless Steel Top Fixture
HTUSH	12ga.	Universal Stainless Steel Top Fixture, Tall
HTLS	12ga.	Low-Headroom Stainless Steel Top Fixture



Combination Hinge



Full Vision C-Style



Cut Down Hinge OHD

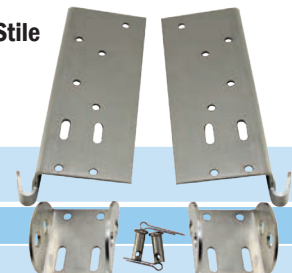
## Stainless Steel Bottom Fixtures

Part Number	Gauge	Description
HBS2U	12ga.	Bottom Fixtures - 2" Door, 2" or 3" Track - Single End Stile
HBS3U	12ga.	Bottom Fixtures - 3" Door, 2" or 3" Track - Single End Stile
HBS2UD	12ga.	Bottom Fixtures - Heavy Duty 11 ga, 2" Door, 2" or 3" Track, - Double End Stile
HBS3UD	12ga.	Bottom Fixtures - Heavy Duty 11 ga, 3" Door, 2" or 3" Track, - Double End Stile
HBS23LU	12ga.	LHR Bottom Fixtures - Heavy Duty 11 ga, 2" Door, 2" or 3" Track

Double End Stile



Single End Stile



# Torsion Springs

One of the most fundamental parts of your door system, torsion springs need serious protection from rust and corrosion too. That protection is available in the form of 302 stainless steel—ideal for the most extreme environments. These high-quality torsion springs last longer and maintain a cleaner appearance without the ugly “rusty drip down” look common with other materials, even when exposed to repeated wet and corrosive conditions.

## Stainless Steel

Rust-resistant 302 series stainless steel wire.

Part Number	Description
SPSX-XX-XX	Stainless Steel Torsion Springs

# Spring Wire Chart

Common Diameters	Common Wire Sizes		Stainless Steel
1-3/4"	.192	.295	.192
2"	.207	.306	.207
2-1/4"	.218	.312	.218
2-5/8"	.225	.319	.225
3"	.234	.331	.234
3-3/8"	.243	.343	.243
3-3/4"	.250	.362	.250
5-1/4"	.262	.375	.262
5-7/8"	.273	.393	.283
6"	.283	.406	.295
			.306
			.312
			.331
			.343
			.362
			.375
			.393
			.406

Winding Chart

Left Hand Wind

Right Hand Wind

## Warning:

Torsion springs are under extreme pressure and should only be handled by experienced personnel who have been trained in the proper procedures, tools and safety measures. Improper use could result in serious injury or death.



“We rely on rust-resistant torsion springs from American Garage Door Supply to build door systems that are safe and durable...  
...the ordering process is very reassuring.”  
– Ralph P. from Los Angeles, CA



## Ready to Order?

Please have one of these two sets of information ready

### Option A)

- Winding:** Identify if your spring should be right-hand wound or left-hand wound. (See winding chart at left.)
- Inside Diameter:** Measure the springs inside diameter and refer to the Spring Wire Chart at left. Standard diameters for stainless steel are 2", 2-5/8", 3-3/4" and 6".
- Wire Size:** Measure 20 coils to nearest 1/16". Refer to “Spring Wire Chart”  
(Example: 20 Coils measures 5-1/4";  
5.25/20 =.262 Wire)
- Length:** Measure overall length of spring, or provide the total number of coils. Spring should be unwound for this measurement.

### Option B)

- Door Size, W x H**
- Door Weight**
- Drum Size/Number**
- Track Configuration**

Duplex and other wire diameters are also available.

**Call Today!**  
**1-800-233-1487**



## Why Use Stainless Steel Hardware?

Stainless steel adds longevity that no other material can match. For corrosive, dirty, wet and non-stop applications, stainless steel hardware outlasts because of its rust-resistant qualities. And even though your door system works hard, it won't look that way. Stainless steel maintains a cleaner appearance for your facility.



# Winding Cones

## Specialty Coated

Part Number	Description
C200(L or R)C	2" ID Winding Cone Set (L or R) Hand Wind
C258(L or R)C	2-5/8" ID Winding Cone Set (L or R) Hand Wind
C334(L or R)C	3-3/4" ID Winding Cone Set (L or R) Hand Wind
C600(L or R)C	6" ID Winding Cone Set (L or R) Hand Wind
C600C(L or R)114	6" ID Winding Cone Set (L or R) Hand Wind, 1-1/4"

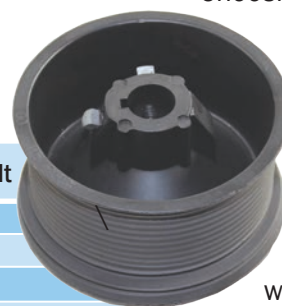


## Specialty Coated Parts

### Less Maintenance. Better Appearance.

Choosing our specialty coated parts for corrosive, wet or high visibility areas is a smart choice.

FDA approved corrosion resistant coating has a clean appearance and will withstand a 1000 hours in a salt spray test.



# Cable Drums

## Specialty Coated

Part Number	Description	Max. Door Ht
400-8SC	Standard Lift, Residential, 1", Non-Keyed	8'3"
400-12SC	Standard Lift, Light Commercial, 1", Keyed	12'3"
5250-18SC	Standard Lift, Medium Commercial, 1", Keyed	18'2"
800-32SC	Standard Lift, Heavy Commercial, 1", Keyed	32'1"
800-32SC-125	Standard Lift, Heavy Commercial, 1-1/4", Keyed	32'1"
400-54SC	Highlift, Light Commercial, 1", Keyed	11'1" (54" Highlift)
5250-54SC	Highlift, Medium Commercial, 1", Keyed	12'0" (54" Highlift)
5750-120SC	Highlift, Medium Commercial, 1", Keyed	15'0" (120" Highlift)
6375-164SC	Highlift, Heavy Commercial, 1", Keyed	19'0" (164" Highlift)
6375-164SC-125	Highlift, Heavy Commercial, 1"-1/4" Keyed	19'0" (164" Highlift)
850-11SC	Vertical Lift, Medium Commercial, 1", Keyed	11'1"
1100-18SC	Vertical Lift, Medium Commercial, 1", Keyed	18'1"
1350-28SC	Vertical Lift, Medium Commercial, 1", Keyed	28'1"

# Torsion Shafts

## 303/304 Stainless Steel

Part Number	Description
SSK100S-06	6' Stainless Steel, 1" OD Solid, Keyed
SSK100S-12	12' Stainless Steel, 1" OD Solid, Keyed
SSK100S-15	15' Stainless Steel, 1" OD Solid, Keyed
SSK125S-12	12' Stainless Steel, 1.25" OD Solid, Keyed
SH100S20	20' Stainless Steel, 1" OD Hollow, .083
SSK-3	1/4" x 1/4" x 3" Stainless Steel Keystock



# Couplers

## Specialty Coated

Part Number	Description
CP100C	1" ID Coated Coupler
CP125C	1.25" ID Coated Coupler



# Cable

## 304 Stainless Steel

Part Number	Description
CBS18	1/8", 7 X 19 Stainless Steel Cable
CBS532	5/32", 7 x 19 Stainless Steel Cable
CBS316	3/16", 7 X 19 Stainless Steel Cable
CBS14	1/4", 7 X 19 Stainless Steel Cable
CBS18NR	1/8", 19 x 7 Non-Rotating Stainless Steel Cable

Cable assemblies available with copper fittings & stainless steel thimbles



# Stainless Steel Track

## 3 Inch Stainless Steel Track - 12ga.

3" SS Full Angle Mounted Track Set	Height	Standard Lift	HighLift- Ext. Vertical	High Lift- w Highlift Ext.	Vertical
	8'	TAS308-SL	TAS308-EV	TAS308-HL	TAS308-VL
	10'	TAS310-SL	TAS310-EV	TAS310-HL	TAS310-VL
	12'	TAS312-SL	TAS312-EV	TAS312-HL	TAS312-VL
	14'	TAS314-SL	TAS314-EV	TAS314-HL	TAS314-VL
	16'	TAS316-SL	TAS316-EV	TAS316-HL	TAS316-VL
	18'	TAS318-SL	TAS318-EV	TAS318-HL	TAS318-VL
	20'	TAS320-SL	TAS320-EV	TAS320-HL	TAS320-VL

Universal and easy to install.

Available in 3-inch/12-gauge and 2-inch/14-gauge, our stainless steel track products have all of your needs covered. Use our 3-inch track size for just about any wet or corrosive commercial application or use our 2-inch track size for light commercial or residential garage doors. Our stainless track offers a longer service life than galvanized products and fits almost any sectional door. The radius is completely roll-formed, so you're not dealing with weldments and interrupted door travel. We use the highest-quality 304L, **FDA-approved** stainless steel material for its resistance to rust and corrosion created from moisture or chemical exposures, and for its thermally-stable properties.

## 2 Inch Stainless Steel Track - 14ga.

2" SS Bracket Mounted Track Set	Height	Standard Lift	Highlift- Ext. Vertical	High Lift- w Highlift Ext.	Vertical
	8'	TAS208-SL-B	TAS208-EV-B	TAS208-HL-B	TAS208-VL-B
	10'	TAS210-SL-B	TAS210-EV-B	TAS210-HL-B	TAS210-VL-B
	12'	TAS212-SL-B	TAS212-EV-B	TAS212-HL-B	TAS212-VL-B
	14'	TAS214-SL-B	TAS214-EV-B	TAS214-HL-B	TAS214-VL-B
	16'	TAS216-SL-B	TAS216-EV-B	TAS216-HL-B	TAS216-VL-B

2" SS Clip Angle Mounted Track Set	Height	Standard Lift	Highlift- Ext. Vertical	High Lift- w Highlift Ext.	Vertical
	8'	TAS208-SL-C	TAS208-EV-C	TAS208-HL-C	TAS208-VL-C
	10'	TAS210-SL-C	TAS210-EV-C	TAS210-HL-C	TAS210-VL-C
	12'	TAS212-SL-C	TAS212-EV-C	TAS212-HL-C	TAS212-VL-C
	14'	TAS214-SL-C	TAS214-EV-C	TAS214-HL-C	TAS214-VL-C
	16'	TAS216-SL-C	TAS216-EV-C	TAS216-HL-C	TAS216-VL-C

Low headroom configurations also available.

"Even though the stainless steel track I ordered for my carriage garage door project was easy to install, it feels great to know that it won't need replacing any time soon."

- Ross H. from Cleveland, OH



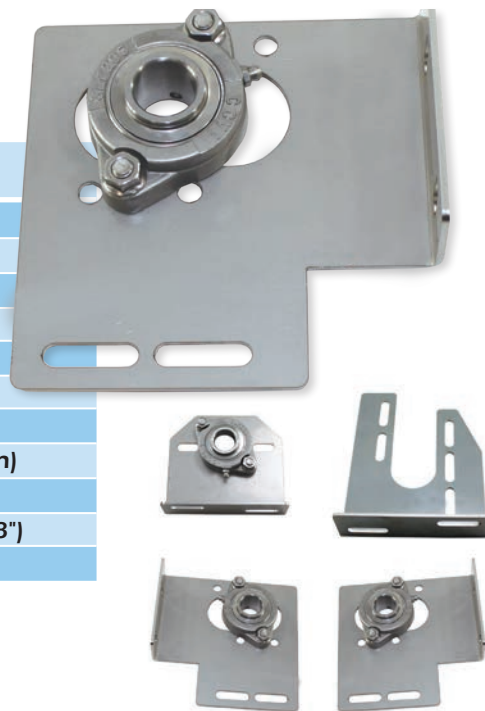
**2 Inch**  
Stainless Steel Track  
**Now Available!**  
Ideal for Carriage  
House Doors



## Bearing Plates

### 304L Stainless Steel -with PBSS-SS Bearing

Part Number	Description
PBSS-BCS338	3-3/8" Center Plate w/PBSS-SS Bearing
PBSS-BCS438	4-3/8" Center Plate w/PBSS-SS Bearing
PBSS-BCS438-6	4-3/8" Center Plate w/PBSS-SS Bearing for 6" Springs
PBSS-BCS500	5" Center Plate w/PBSS-SS Bearing
PBSS-BCS500-6	5" Center Plate w/PBSS-SS Bearing for 6" Springs
PBSS-BCS600	6" Center Plate w/PBSS-SS Bearing
PBSS-BCS600-6	6" Center Plate w/PBSS-SS Bearing for 6" Springs
PBSS-BCUS (L or R)	Universal Center w/PBSS-SS Bearing, (Left or Right Projection)
PBSS-BFS345	End Plate w/PBSS-SS Bearing, Adjustable (3-3/8" & 4-3/8")
PBSS-BFS345-T	End Plate, Tall w/PBSS-SS Bearing, Adjustable (3-3/8" & 4-3/8")
PBSS-BFS56	End Plate w/PBSS-SS Bearing, Adjustable (5" & 6")

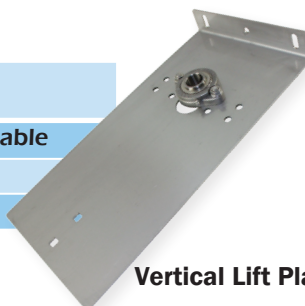


Stainless Steel Bearing Plates

## Highlift/Vertical Headplates

### 304L Stainless Steel -with PBSS-SS Bearing

Part Number	Description
PBSS-HLHS345-3	Highlift Headplates, 2" or 3" Track, Adjustable
PBSS-HLHS6-3W	Highlift Headplates, Extra Wide
PBSS-VLHPSB	Full Vertical Lift Headplate, 2" or 3" Track



Vertical Lift Plate

## Greaseable Bearings

### Stainless Steel

Part Number	Description
PBSS-SS	1" ID Greaseable Bearing
PBS-SS-125	1-1/4" ID Greaseable Bearing



Includes Stainless Bearing & Cast Stainless Housing

"I've found American Garage Door Supply to consistently offer a wide variety of sizes and parts, but more importantly, the right ones. Working with them makes my projects move from start to finish seamlessly."

- Steve H. from Boston, MA



Highlift Plate

### Is Stainless Steel Rustproof?

No metal alloy is safe from rust, but stainless steel is your very best option for fending off corrosion and rust in any high-moisture environment. Time-after-time, stainless steel proves itself as the clear choice for keeping your hardware as rust-free and reliable as possible.



## Go with Stainless Steel from Top to Bottom

Even the smallest details of your garage door system deserves the benefits of stainless steel—and you'll benefit too, by spending less time maintaining your facility and more time running your well-built business.

Stainless Strut

## Struts

### 304 Stainless Steel

Part Number	Description
SS-STRUT-10	Strut, 2-1/2", 16ga. Stainless Steel, 10 Ft.
SS-STRUT-12	Strut, 2-1/2", 16ga. Stainless Steel, 12 Ft.
SS-STRUT-14	Strut, 2-1/2", 16ga. Stainless Steel, 14 Ft.
SS-STRUT-16	Strut, 2-1/2", 16ga. Stainless Steel, 16 Ft.
SS-STRUT-24	Strut, 2-1/2", 16ga. Stainless Steel, 24 Ft.

## Pusher Springs

### 304 Stainless Steel

Part Number	Description
SPS15	15" Pusher Springs, 304 Stainless Steel

Pusher Springs

## Locks/Angle Iron

### 304 Stainless Steel

Part Number	Description
LIU-SS	Inside Slide Lock, Stainless Steel
PAS112-08	Perforated Angle, 12ga. 1-1/2" x 1-1/2" x 8', 3/8"+ Holes
PAS220-08	Perforated Angle, 12ga. 2" x 2" x 8', 3/8"+ Holes

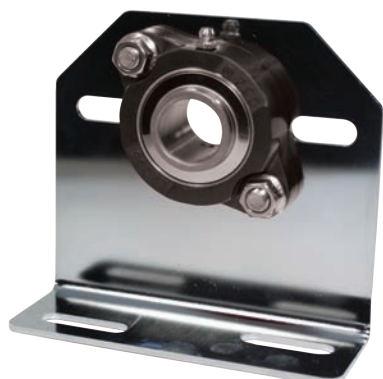
Perforated Angle

Slide Locks

## Stainless Steel Chain

Part Number	Description
CSS41	#41 Stainless Steel Roller Chain, 300 Series
CSS50	#50 Stainless Steel Roller Chain, 300 Series
CMLSS41	#41 Stainless Steel Master Link, 300 Series
CMLSS50	#50 Stainless Steel Master Link, 300 Series

Roller Chain



### What is Electropolishing?

Electropolishing gives stainless steel the most superior shine possible. This process not only creates an extremely smooth surface that's easy to clean, it also gives your facility that brand-new, untouched look. Electropolishing even adds an extra degree of corrosion resistance. Our electropolished stainless steel hardware is perfect for applications like custom garages, restaurants, auto dealerships, fire departments and food processing. Questions?

**Call us—the pioneer of stainless steel track and hardware—to learn more.**

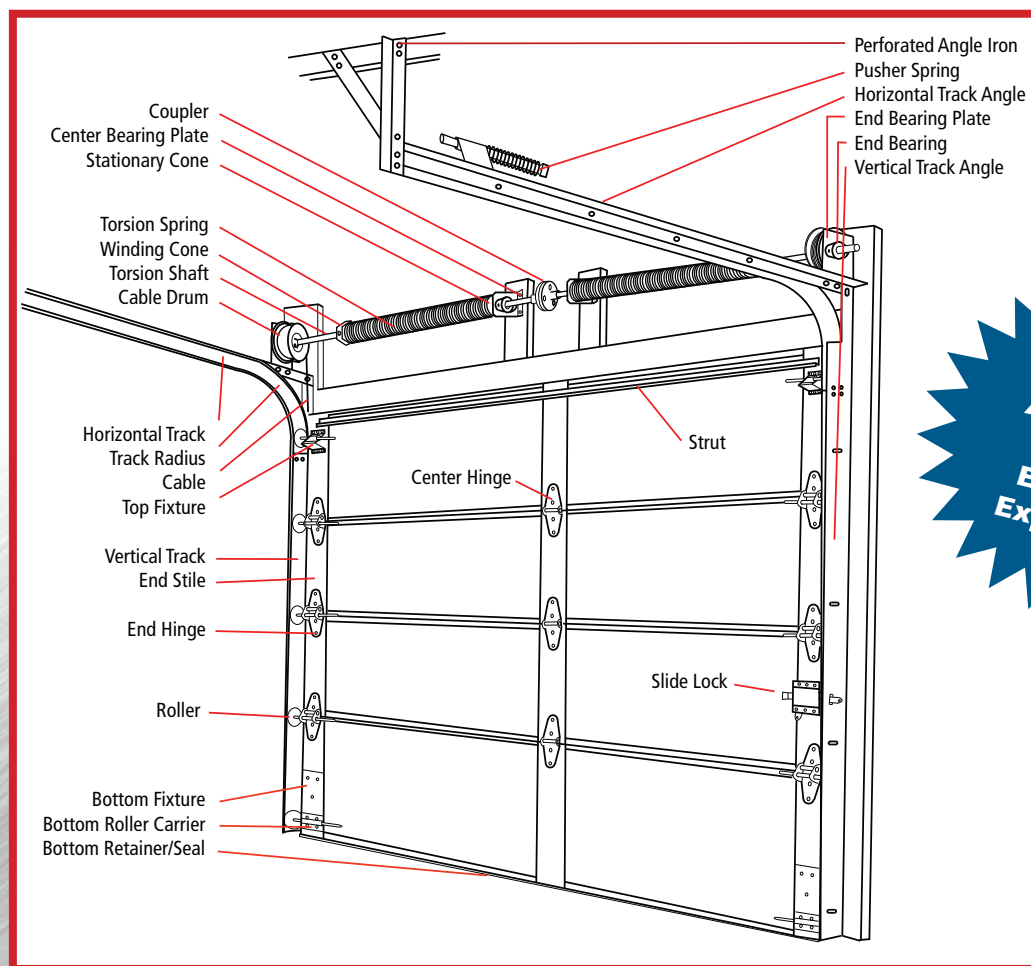


# Fasteners

Part Number	Description	
TBLT1458SS	Track Bolt, 1/4" x 5/8", 304 Stainless Steel	
NUTFS14	Flange Nut, 1/4", 304 Stainless Steel	
LAG516158P	Wood Lag, 5/16" x 1-5/8", Specialty Coated	
LAG5163P	Wood Lag, 5/16" x 3", Specialty Coated	
LAGS141W	Wood Lag, 1/4" x 1" w/washer head, 300 Series Stainless	
LAGS14125W	Wood Lag, 1/4" x 1-1/4" w/washer head, 300 Series Stainless	
LAGS14150W	Wood Lag, 1/4" x 1-1/2" w/washer head, 300 Series Stainless	
TAOS141W	Hinge Tek Screws 1/4" x 1" self-driller w/bonded washer, 400 Plated Stainless Steel	
TAOS141	Hinge Tek Screw 1/4" x 1" self-driller, 400 Plated Stainless	
TAPS1458W	Hinge Screw 1/4" x 5/8" self-threader w/ bonded washers, 304 Stainless Steel	
TAPS1458	Hinge Screw 1/4" x 5/8", 304 Stainless Steel	
CBLT381	Carriage Bolt, 3/8" x 1", 304 Stainless Steel	
HBLTS381	Hex Head Bolt, 3/8" x 1", 304 Stainless Steel	
HBLTS3815	Hex Head Bolt, 3/8" x 1-1/2", 304 Stainless Steel	
HBLTS3825	Hex Head Bolt, 3/8" x 2-1/2", 304 Stainless Steel	
WASHS38	Washer, 3/8", 304 Stainless Steel	
NUTFS38	Flange Nut, 3/8", 304 Stainless Steel	
NUTS38	Hex Nut, 3/8", 304 Stainless Steel	

**If it's made in galvanized steel... We probably make it in stainless steel...**

All of the listed parts are available in stainless steel or other specialized material for maximum corrosion resistance.



**316  
Stainless  
Available  
for  
Extreme  
Exposures**



## The Source That Opens Doors.



We are your go-to source for stainless steel and other specialty garage door hardware. We have been in the business for over 30 years and have **earned our mark as experts**. We simply offer the **best products in the market** (which we're proud to continually do). The reason we're number one is because **we put you and your needs first**. You need your doors and business to run smoothly, day-after-day; that's why we make it our business to help you select the right products that will go the distance in the worst conditions.

Call us today at **800-233-1487** and **Let Our Experience Go To Work For You!**



1225 Industrial Park Drive S.E.  
Bemidji, MN 56601