

STANDARD LIFT TRACK

Track Assembly:

- 14 Ga. 304 Stainless Steel - Clip Angle Mount
- 14 Ga. Galvanized Steel - Clip Angle Mount

Track Mounting Angle:

- Inside Angle for Wood, Steel or Aluminum
- Outside Angle for Wood
- Outside Angle for Masonry

Shaft: Solid Keyed

- 304 Stainless Steel
- Galvanized Steel

Drums:

- Cast Aluminum
- Specialty Coated

Bearings: Sealed Greaseable

- Stainless Steel
- Painted Cast Iron

Torsion Springs:

- 304 Stainless Steel
- Galvanized Steel

INTERMEDIATE HORIZONTAL TRACK SUPPORT: (BY INSTALLER)
*For Doors Over 12' High or 144 sq/ft

HORIZONTAL ANGLE:

BACK HANG: (BY INSTALLER)

TROLLEY OPERATOR: (18" Required from)

- NuMax
- MagneMax
- Electric
- Supralift

PUSHER SPRING OR SPRING BUMPER: (OPTIONAL)

HORIZONTAL TRACK:
 14 GA. Galvanized 2" TRACK
 14 GA. Stainless Steel 2" TRACK

RADIUS:
15" R. Galvanized
15" R. Stainless Steel

** 2" Track Available Upon Request

BACK ROOM DOOR HEIGHT + 18" SS

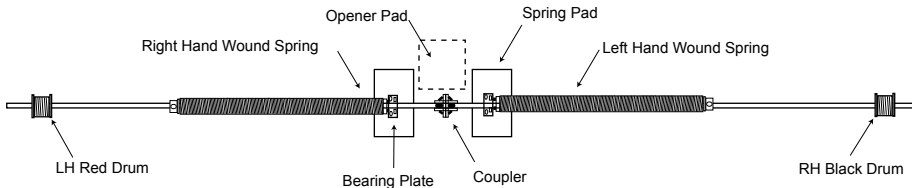
2" VERTICAL TRACK:

HEIGHT IN CLEAR:

TRACK CLEARANCE:

NOTE:

Spring size and configuration individually calculated to counterbalance door load. An exact spring layout can be furnished upon approval of bid. Some doors may require more than 2 springs.



RECOMMENDED MINIMUMS

Spring Pad - By Others:

(Pads must be flush with jambs)

- Metal - 8"W x 12"H x 1/4" For use with metal jambs
- Wood - 2" x 6" LUMBER x 12" For use with wood jambs

Torsion Springs:

- 10,000 cycle
- 25,000 cycle
- 50,000 cycle
- 100,000 cycle
- OTHER _____

HEADROOM REQUIREMENTS:

DOOR HEIGHT	2" TRACK
UP TO 10'0"	14"
10'3" - 18'0"	15"
18'3" AND UP	18"

Trolley Operators MAY Require an Additional 6" Headroom

CLIP ANGLE MOUNT SHOWN

© AMGDS 2006



CUST: _____
 JOB #: _____
 ARCH: _____
 CONT: _____

STANDARD LIFT

OPENING SIZE: ___' ___" W x ___' ___" H

DOOR SIZE: ___' ___" W x ___' ___" H

OPERATOR MODEL : _____

AVAILABLE HEADROOM: _____

HEIGHT IN CLEAR: _____

DOOR ONLY

DOOR WITH OPENER

Standard Lift

DATE: _____

BID #: _____

PAGE ___ of ___