

# Extended Vertical Track

**Track Assembly:**

- 12 Ga. 304 Stainless Steel - Full Angle Mount
- 11 Ga. Galvanized Steel - Clip Angle Mount

**Track Mounting Angle:**

- Inside Angle for Wood, Steel or Aluminum
- Outside Angle for Wood
- Outside Angle for Masonry

**Shaft: Solid Keyed**

- 304 Stainless Steel
- Galvanized Steel

**Drums:**

- Cast Aluminum
- E-Coated

**Bearings: Sealed Greaseable**

- Stainless Steel
- Painted Cast Iron

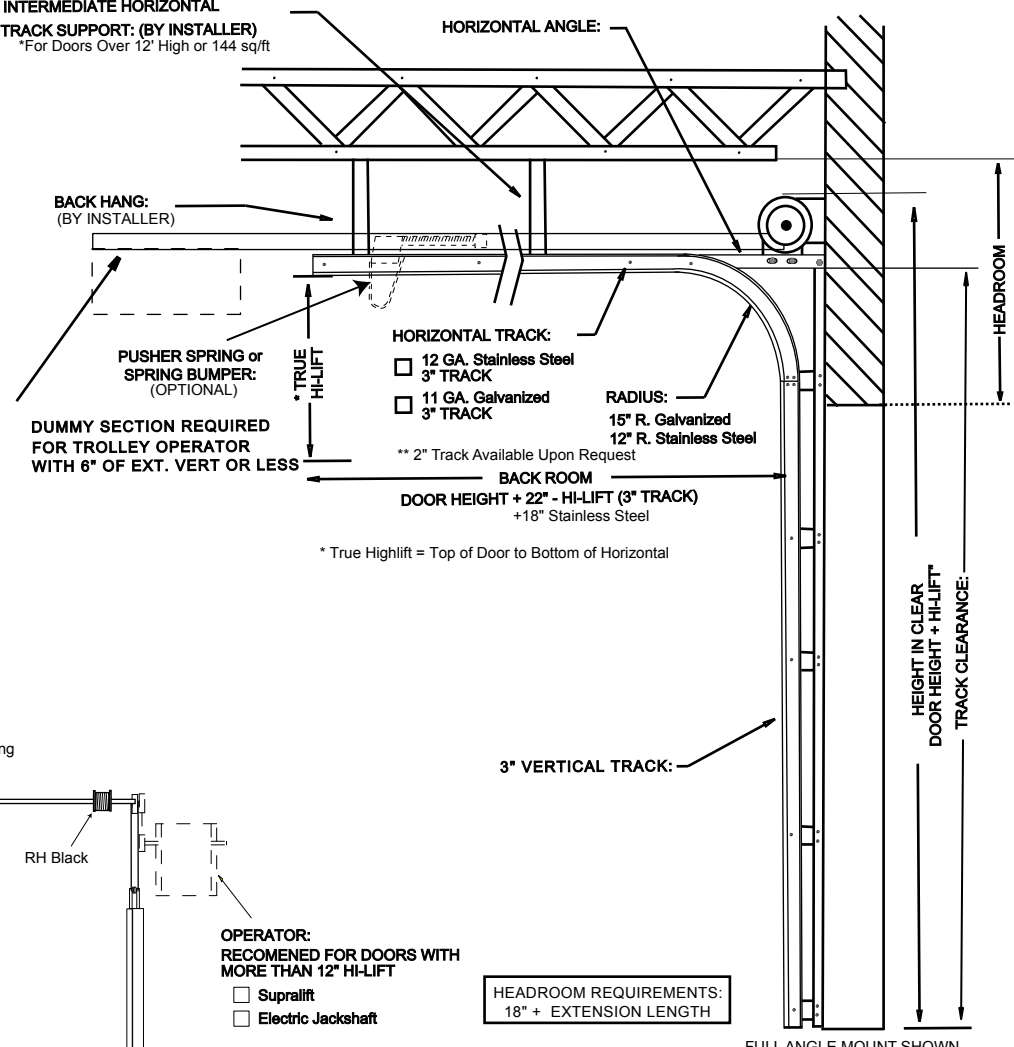
**Torsion Springs:**

- 304 Stainless Steel
- Galvanized Steel

**NOTE:**

Spring size and configuration individually calculated to counterbalance door load. An exact spring layout can be furnished upon approval of bid. Some doors may require 6" springs

INTERMEDIATE HORIZONTAL TRACK SUPPORT: (BY INSTALLER)  
\*For Doors Over 12' High or 144 sq/ft



**TROLLEY OPERATOR:**

- Nu MAX Horizontal
- Magne MAX Horizontal
- Electric Trolley

DUMMY SECTION REQUIRED FOR TROLLEY OPERATOR WITH 6" OF EXT. VERT OR LESS

**HORIZONTAL TRACK:**

- 12 GA. Stainless Steel 3" TRACK
- 11 GA. Galvanized 3" TRACK

RADIUS:  
15" R. Galvanized  
12" R. Stainless Steel

\*\* 2" Track Available Upon Request

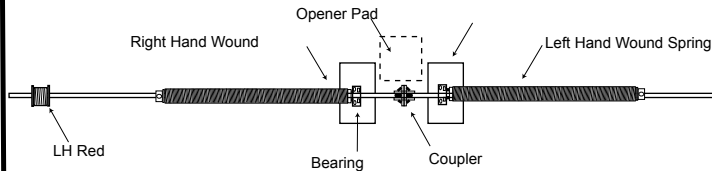
BACK ROOM  
DOOR HEIGHT + 22" - HI-LIFT (3" TRACK)  
+18" Stainless Steel

\* True Highlift = Top of Door to Bottom of Horizontal

3" VERTICAL TRACK:

HEIGHT IN CLEAR: 18" + EXTENSION LENGTH

FULL ANGLE MOUNT SHOWN



**RECOMENDED MINIMUMS:**

SPRING PAD - BY OTHERS: (PADS MUST BE FLUSH WITH JAMBS)

- METAL - 8"W x 12"H x 1/4" FOR USE WITH STEEL JAMBS
- WOOD - 2" x 6" LUMBER x 12" FOR USE WITH WOOD JAMBS

**TORSION SPRINGS:**

- 10,000 CYCLE
- 25,000 CYCLE
- 50,000 CYCLE
- 100,000 CYCLE
- OTHER \_\_\_\_\_

**OPERATOR:**

RECOMENED FOR DOORS WITH MORE THAN 12" HI-LIFT

- Supralift
- Electric Jackshaft

© AMGDS 2006

 1-800-233-1487	CUST: _____	<b>EXTENDED VERTICAL</b>	OPERATOR MODEL : _____	HEIGHT IN CLEAR: _____	<b>Ext. Vert Track</b>
	JOB #: _____	OPENING SIZE: ___' ___" W x ___' ___" H	EXTENSION LENGTH: _____	<input type="checkbox"/> DOOR ONLY	DATE: _____
	ARCH: _____	DOOR SIZE: ___' ___" W x ___' ___" H	AVAILABLE HEADROOM: _____	<input type="checkbox"/> DOOR WITH OPENER	BID #: _____
	CONT: _____				PAGE ___ of ___