

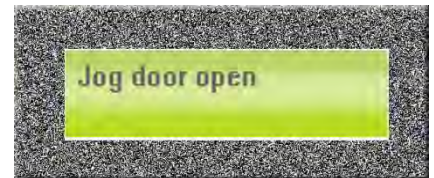
INITIAL SETUP COMMANDS FOR THE SMARTLIFT OPERATOR:

*NOTE: Scroll with UP and DOWN Buttons.

Also note that if pusher springs will be used on the door they must be installed prior to programming the operator.

Setting Travel Limits

1. Press the UP button on the PLC until you see “**Calibrate now**” on the digital screen.
2. Press the ENTER button.
3. Set the **Open limit** by scrolling up or down until you see “**Jog door open**” on the digital screen.
4. Press the ENTER button.
5. Push and hold the UP button until the door reaches the desired open position & release the UP Button.
Note: Do not release the Up button until you have reached the desired open position.
6. Press the ENTER button.
7. You will then see “**Jog door close**” on the digital screen.
8. Push and hold the DOWN button until the door reaches the completely closed position & release the DOWN button. **Note: Do not release the Down button until you have reached the completely closed position.**
9. Press the ENTER button.
10. You will then see “**Cycle door once**” on the digital display.
11. To finish the Calibration, cycle the door Open & Closed one (1) time by pressing the buttons on the cover of the control box. This will set the default settings for future adjustments.
 - a. The **Open and Close limits** are now calibrated.



Entering Password to Access Menu for Programming User Profile – (page 3)

1. From the Startup Menu scroll until “**Ent pswd**” appears on the digital screen.
2. Press the ENTER button.
3. Enter the password – **ENT, DOWN, DOWN, ENT, ESC, ESC, ESC, ESC.**
4. You are now in the correct menu to program the next several settings.



Setting Open/Close Travel Speed – (page 3 - #f & #g)

1. Scroll until the digital display reads “**Op top spd**” for open speed or “**CL top spd**” for close speed.
2. Press the ENTER button.
3. Set Open and Closing speeds by press the UP or DOWN buttons. Adjustment ranges from 1-400, 1 is slowest and 400 is top speed.



4. Press the ENTER button.

Setting Obstruction Sensing Sensitivity – (page 3 - #c & #d) (FOR NON UL 325 Complaint Openers ONLY)

1. Scroll until the digital display reads “CL over curr%”.
2. Press the ENTER button.
3. Adjust this setting as low as possible, testing each setting until the door reverses without an obstruction. Increase the setting by 5. Test the door several times until desired sensitivity is reached.
4. Press the ENTER button.
5. Set the “CL decal 1%” to the same number.



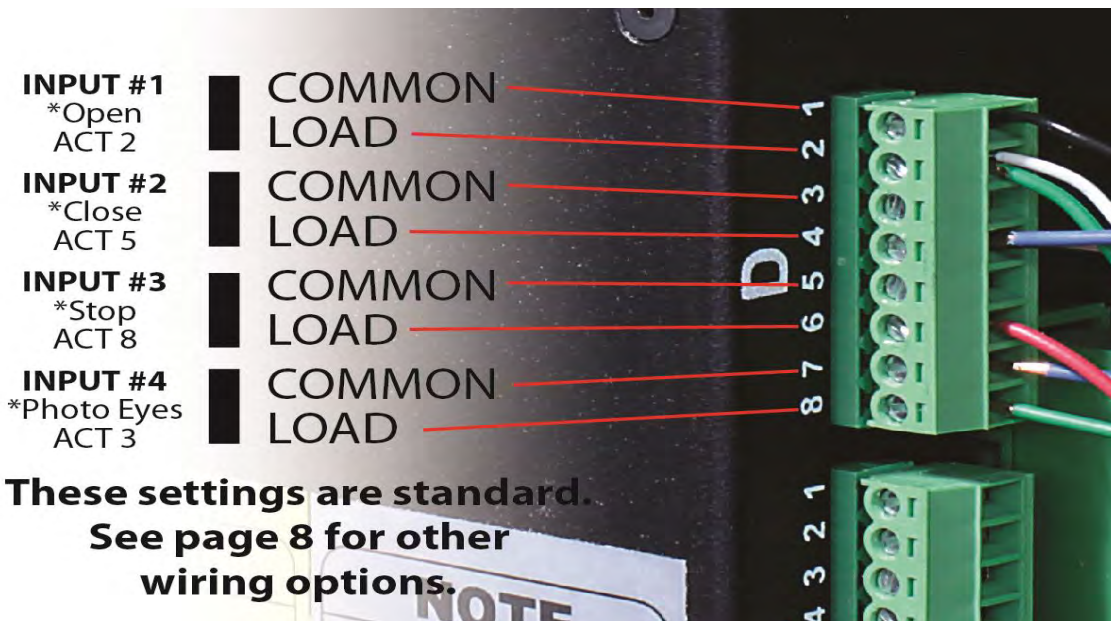
Setting the Timer to Close – (page 3 - #a)

1. Scroll until the digital display reads “CL delay”.
2. Press the ENTER button.
3. Set the Timer to Close by pressing the UP/DOWN buttons until the desired seconds are displayed.
4. Press the ENTER button.



Entering Password for OEM Setup Menu (Input Setup) – (pages 5 & 8)

Inputs are located on the PLC in terminal “D” and “E”. Each input is grouped into two connection points, so connections #1 & 2 on the “D” terminal are input #1; connections #3 & 4 are input #2 and so on. Therefore inputs #1 - #4 are on the “D” terminal and inputs #5 - #8 are on the “E” terminal. All odd numbered connections, #1, 3, 5 & 7, are wired to common. All even numbered connections, #2, 4, 6 & 8, are the controlling contacts. Typically, Input #1 is setup with “Activation” #2 (Open), Input #2 is setup with “Activation” #5 (Close), Input #3 is setup with “Activation” #8 (Stop), Input #4 is setup with “Activation” #3 (Photo Eyes-Open). Inputs #5, 6 & 7 are open for programming and #8 is not used.

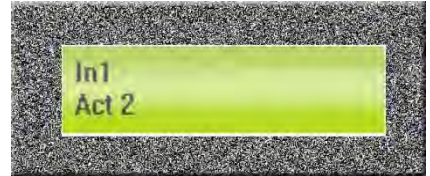


1. From the Startup Menu scroll up until “Ent pswd” appears on the digital screen.
2. Press the ENTER button.
3. Enter the password – ESC, ENT, UP, UP, UP, DOWN, UP, DOWN.
4. You are now in the correct menu to program the Inputs.



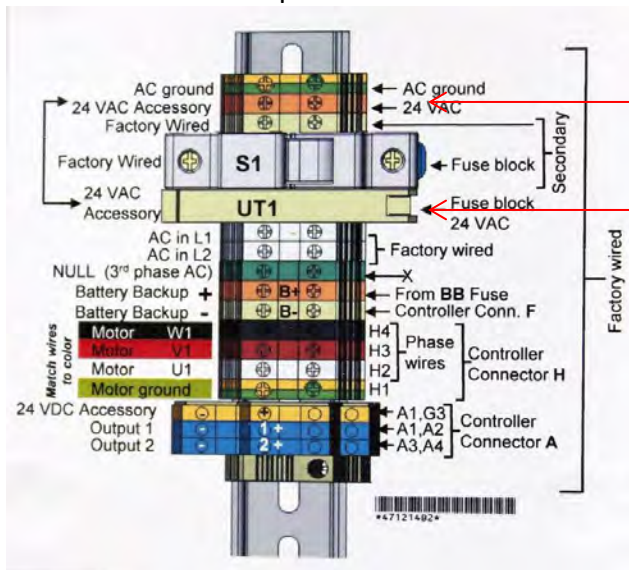
Programming Inputs – (page 8)

1. Scroll until “Input setup” appears on the digital screen.
2. Press the ENTER button.
3. “In1 – Act 2” will appear on the digital screen.
 - a. This means that Input #1 is programmed to Activation #2.
4. To change the Input Activation, scroll to the desired Input and press the ENTER button.
5. Use the UP or DOWN buttons to change the Activation Code.
6. Once the desired Activation Code is displayed press the ENTER button.
 - a. The Input is now programmed.



Wiring for Telco Photo Eyes

1. #1 on the eleven pin base needs to be wired to Input 4, slot D-7 (common). (See above picture)
2. #2 on the eleven pin base needs to be wired to Tan colored 24 VAC supply on main bus. (UT1)
3. #3 on the eleven pin base needs to be wired to Input 4, slot D-8. (See above picture)
4. #10 on the eleven pin base needs to be wired to Orange colored 24 VAC supply on main bus.
 - a. Just below the ground.
5. #5 on the eleven pin base needs to have the Red wire from the Photo Eye wired in to it.
6. #6 on the eleven pin base needs to have the Yellow wire from the Photo Eye wired in to it.
7. #7 on the eleven pin base needs to have the Unshielded wire from the Photo Eye wired in to it.
8. #8 on the eleven pin base needs to have the Black wire from the Photo Eye wired in to it.



Connect #10 contact to this terminal.

Connect #2 contact to this terminal.