

LOW-HEADROOM FRONT MOUNT TRACK

Track Assembly:

- 12 Ga. 304 Stainless Steel 3" - Full Angle Mount
- 11 Ga. Galvanized Steel 3" - Clip Angle Mount
- 14 Ga. Galvanized Steel 2" - Clip Angle Mount
- 14 Ga. 304 Stainless Steel 2" - Clip Angle Mount

Track Mounting Angle:

- Inside Angle for Wood, Steel or Aluminum
- Outside Angle for Wood
- Outside Angle for Masonry

Shaft: Solid Keyed

- 304 Stainless Steel
- Galvanized Steel

Drums:

- Cast Aluminum
- Specialty Coated

Bearings: Sealed Greaseable

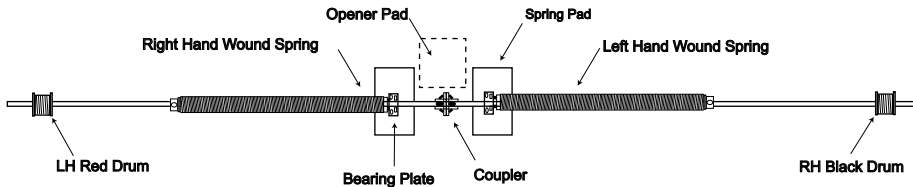
- Stainless Steel
- Painted Cast Iron

Torsion Springs:

- 304 Stainless Steel
- Galvanized Steel

NOTE:

Spring size and configuration individually calculated to counterbalance door load. An exact spring layout can be furnished upon approval of bid. Some doors may require more than 2 springs



RECOMENDED MINIMUMS

Spring Pad - By Others:
(Pads must be flush with jambs)

- Metal - 8"W x 12"H x 1/4"
For use with Metal jambs
- Wood - 2" x 6" LUMBER x 12"
For use with wood jambs

TORSION SPRINGS:

- 10,000 cycle
- 25,000 cycle
- 50,000 cycle
- 100,000 cycle
- OTHER _____

INTERMEDIATE HORIZONTAL
TRACK SUPPORT: (BY INSTALLER)
*For Doors Over 12' High or 144 sq/ft

2" TOP TRACK/STARTER ANGLE
Galvanized on ALL Models

REAR HANGER:
(BY INSTALLER)

TROLLEY OPERATOR:

- Nu MAX
- Magne MAX
- Electric Trolley

HORIZONTAL TRACK:

RADIUS:

- 2" - 12" R. UPPER
- 3" - 15" R. LOWER
- OR
- 2" - 15" R. LOWER

BACK ROOM
DOOR HEIGHT + 18" (2" TRACK)
DOOR HEIGHT + 22" (3" TRACK)

VERTICAL TRACK:

HEADROOM

HEIGHT IN CLEAR
DOOR HEIGHT - 1"

HEADROOM REQUIREMENTS:
2" TRACK: 10"
3" TRACK: 13"
6" ADDITIONAL HEADROOM REQUIRED
FOR TROLLEY OPERATOR

CLIP ANGLE MOUNT SHOWN

© AMGDS 2006

American
garage door supply inc.
1-800-233-1487

CUST: _____
JOB #: _____
ARCH: _____
CONT: _____

LOW-HEADROOM FRONT MOUNT

OPENING SIZE: ___' ___" W x ___' ___" H
DOOR SIZE: ___' ___" W x ___' ___" H

OPERATOR MODEL : _____
AVAILABLE HEADROOM: _____

HEIGHT IN CLEAR: _____
 DOOR ONLY
 DOOR WITH OPENER

LH Front

DATE: _____
BID #: _____
PAGE ___ of ___