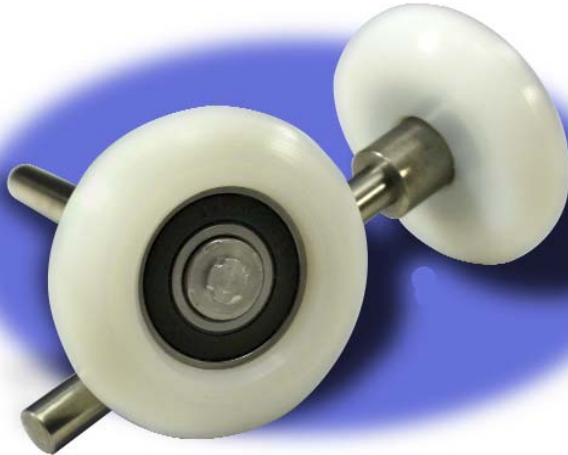


# MAGNUM™ Garage Door Rollers

Innovative design, advanced engineering and superior materials make Magnum garage door rollers the only choice to compliment your high quality door system.

**These functionally superb rollers are stronger, quieter, maintenance-free and have a higher cycle life than other rollers on the market.**



**Magnum** garage door rollers are designed to withstand the harshest conditions you can come up with. Sealed precision ball bearing construction provides excellent load rating and bearing seals prevent problem elements from damaging the raceways. High density polyethylene tire, stainless steel stem and collar ensures rust-free durability and high strength in any situation. New snap lock design now makes snap-ring failure a thing of the past.

Specify the original Magnum rollers for any high use, dirty, wet and/or quiet area or choose the new Magnum SP Supreme for extreme durability in the worst wet and corrosive applications.

## Sizes Available

	Tire Diameter	Stem w/Collar Length
Magnum Original	2" or 3"	5" & 8-1/2"
Magnum SP	3" Only	5" & 8-1/2"

## The Worlds' Most Popular Rollers... Because They Work!

### EXCELLENT FOR:

**High Moisture Areas...** Car, truck and bus washes, marine environments, poultry farms, food processing, chemical plants, cold storage facilities, etc. demand Magnum rollers. Magnum rollers are a vital component to any high moisture install. Corrosion resistant or rust-free material and superior construction means unparalleled performance- just install them and forget them.

### High Cycle Areas..

Service centers, fire, rescue and ambulance stations, dock doors, transportation centers, material handling areas, etc. need Magnum rollers. Rated over 100,000 cycles, that's up to 10 times that of other rollers, this equates to minimal service costs and downtime.

**Dirty Areas...** Concrete mixing areas, sandblasting areas, mining, graineries, paint shops, industrial areas, etc. all benefit from Magnum rollers. UHMW tire means less debris build-up and smoother operation of your door. Shielded tire and sealed bearing keep the bearing free of damaging contamination.

### Quiet Areas...

Hospitals, apartment complexes, retail stores, etc. Specify Magnum rollers for ultra-quiet, clean and maintenance-free operation in any situation.



Distributed by:

Manufactured By  
**American**™  
garage door supply inc.

**The Original**  
**MAGNUM**<sup>TM</sup>  
*Garage Door Rollers*

The original patented design of the Magnum garage door roller has been an industry favorite for over two decades in high cycle, dirty, quiet and wet areas.

Magnum rollers are ideal for any tough application. When your door demands more than what standard rollers can offer, choose Magnums.

**Ideal for High Cycle, Dirty and Quiet Environments!!**



**MAGNUM**<sup>TM</sup> *SP*

Delivering the same great features and benefits as the Original Magnum garage door roller, the Magnum Supreme includes a unique sealed stainless steel bearing for added life and durability in the toughest applications.

The unique bearing includes high quality stainless steel bearing balls and raceways for unequalled performance, reliability and durability.

**Designed specifically for those extra wet and corrosive areas**



**Includes Stainless Steel Bearings**

**The Original**  
**MAGNUM**<sup>TM</sup>  
*Garage Door Rollers*

**Double-Sealed Precision Bearing**

Keeps lubrication in and damaging elements out. Bearing has higher-load rating than other rollers for longer service life on heavier doors. Factory pre-lubed with high moisture lubricant.

**Plated Bearing Balls**

Corrosion resistant for great performance in punishing environments.

**Plated Raceways**

Plated raceways are corrosion resistant for wet environments for longer life.

**High Density Polyethylene Tire**

Wear resistant U.H.M.W tire equates to smooth, ultra-quiet operation and zero rust. Available in 2" or 3" diameter.

**Shielded Tire**

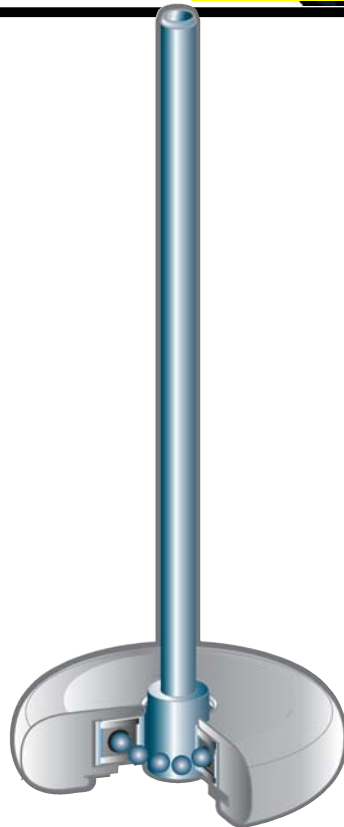
Tire acts as a shield to deflect moisture and damaging elements from the bearing. Now with snap-lock design.

**304 Stainless Steel Stem**

7/16" Diameter stem has high load rating and is rust-free for a longer service life. Available in 5" & 8-1/2" lengths.

**Stainless Steel Collar**

Tough stainless collar for rust-free durability in harsh conditions. Keeps door spaced from the track to prevent door jarring.



**MAGNUM**<sup>TM</sup> *SP*

**Double-Sealed Precision Bearing**

Keeps lubrication in and damaging elements out. Bearing has higher-load rating than other rollers for longer service life on heavier doors. Factory pre-lubed with high moisture lubricant.

**Stainless Steel Bearing Balls**

For complete rust-free operation in the most punishing high moisture environments.

**Stainless Steel Raceways**

Stainless Steel raceways are completely rust-free for years of service in the toughest environments.

**High Density Polyethylene Tire**

Wear resistant U.H.M.W tire equates to smooth, ultra-quiet operation and zero rust. Available in 3" diameter only.

**Shielded Tire**

Tire acts as a shield to deflect moisture and damaging elements from the bearing. Now with snap-lock design.

**304 Stainless Steel Stem**

7/16" Diameter stem has high load rating and is rust-free for a longer service life. Available in 5" & 8-1/2" lengths.

**Stainless Steel Collar**

Tough stainless collar for rust-free durability in harsh conditions. Keeps door spaced from the track to prevent door jarring.